

JULY 2025 NEWSLETTER



ADVANCED WARNING TRAINING TIP

The advance warning area is the section of the roadway where drivers are informed of unexpected slowdowns or stopped traffic. This is critical, especially in rural areas, because drivers are not expecting traffic to be impacted. Advanced warning tools include:



Strategically placed emergency vehicles



Portable signs



Cones



Flares



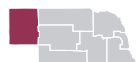
Rolling roadblocks



Dynamic message signs (DMS)

These tools can be deployed individually or in combination to slow down and direct traffic away from the scene – the goal is to warn traffic to slow before reaching the activity area of the incident or in advance of the end of the queue, if applicable. Once the scene transitions from an active emergency to a longer duration traffic impact, the expectation for enhanced traffic control increases. Request additional resources as soon as possible, monitor traffic conditions and make changes as needed to provide warning to drivers.

DISTRICT 5 COALITION NEWS: TRAINING EXERCISE



Nebraska Department of Transportation (NDOT), Nebraska State Patrol (NSP) and partners from local agencies conducted a training exercise at the Western Nebraska Regional Airport on June 21. The exercise simulated two crashes, one involving a hazardous material spill and one involving a fatality. Training exercises support responders in identifying gaps in their response, coordination, and communication, so improvements can be made before facing real-life incidents.



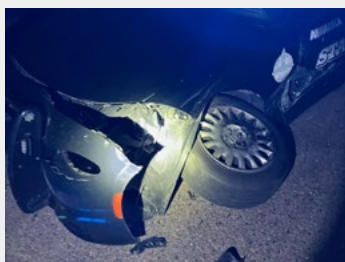
Photo courtesy of NDOT

Watch [this video](#) to hear more about discipline perspectives and objectives measured during the exercise.

RECENT NEBRASKA STRUCK-BY INCIDENTS

NSP experienced three struck-by incidents in June. Struck-by incidents can happen at any time and under any circumstances. Be vigilant on scene, look out for your fellow responders and remember to have an escape route ready.

June 12 – I-80 near Ogallala in a construction zone. The trooper had to run to safety.



June 22 – I-80 near Paxton blocking lanes due to a crash. The trooper had to run to safety.



June 23 – I-80 in Omaha blocking lanes due to a crash. The trooper was in the vehicle and was transported for injuries.



Photos courtesy of Nebraska State Patrol

NSP Colonel Bryan Waugh and NDOT Director Vicki Kramer covered this important topic at a [press conference](#) on June 24, 2025. They are urging the public to do their part in preventing these incidents by moving over, slowing down and eliminating distractions while driving. All struck-by incidents, past or present, should be reported to [respondersafety.com](#). Reminder to assign someone within your agency to report struck-by incidents as we work to improve responder safety.

NDOT'S STATE OPERATIONS CENTER (SOC)

What is the SOC?

NDOT has several resources available to assist with an incident to support safe, quick clearance – and one of those resources is the SOC. The SOC is available 24/7 and serves as the hub of information to deploy resources and alert the motoring public of roadway disruptions. Think of the SOC as NDOT's emergency communications center.



Photo courtesy of the SOC

How can the SOC support responders?

The earlier the SOC is notified, the faster they can activate dynamic message signs (DMS), notify the public of the incident via 511 and other platforms, or coordinate traffic control deployment and other equipment from local maintenance yards.

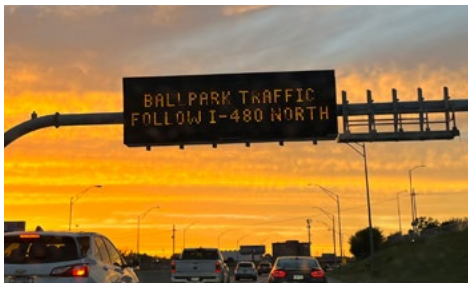


Photo courtesy of the SOC

What information does the SOC need?

Describe the scene and include important details such as type and severity of incident, exact physical location, lanes affected, number of and types of vehicles involved and extent of damage, including any damage to roadway assets like signs, barriers and pavement. The SOC will determine if NDOT support is needed based on the information you provide. They will ask for an on-scene contact phone number to easily communicate during the incident. Notify the SOC when traffic conditions change, such as when lanes open, close or the incident is cleared.

How do I notify the SOC?

Upon verification of an incident, emergency communications or responders should call the SOC at 402-331-5993 or on your area's Regional Operations Common (ROC) channel on the State Radio System. This phone number is not publicized and should only be used by emergency responders.

WHAT DO I DO WITH TIM DATA?

Understanding the impact of traffic incidents on Nebraska roads begins with delving deeper into performance measures, data collection and reporting, and how our actions affect responder and motorist safety. NDOT launched a [Crash Clearance Dashboard](#) that uses data from the Nebraska Investigator's Motor Vehicle Crash Report (NDOT Form 40) to evaluate roadway clearance times (RCT). RCT is a performance measure that can be used to identify opportunities to improve safe, quick clearance.

Working together in a coordinated and collaborative effort reduces the amount of time any one responder needs to spend on scene. Use RCTs and other accessible data to justify formalizing this collaborative effort through policies on:

- Notification and request of resources like temporary traffic control (roadway owner) or tow and recovery.
- Quick dispatch of hazmat specialists, air ambulance or other specialized resources.
- Initial scene size-up for move it/work it decision-making, and policy to support moving incidents.
- Safe vehicle positioning for protection or quick access to patients or crashed vehicles.

Nebraska TIM: Safer, Together



Bobbi Brooks, Nebraska Department of Transportation
bobbi.brooks@nebraska.gov | (402) 479-3878



Sgt. Justin Brase, Nebraska State Patrol
justin.brased@nebraska.gov | (308) 218-9177



dot.nebraska.gov/safety/tim



NEBRASKA
Good Life. Great Journey.
DEPARTMENT OF TRANSPORTATION

