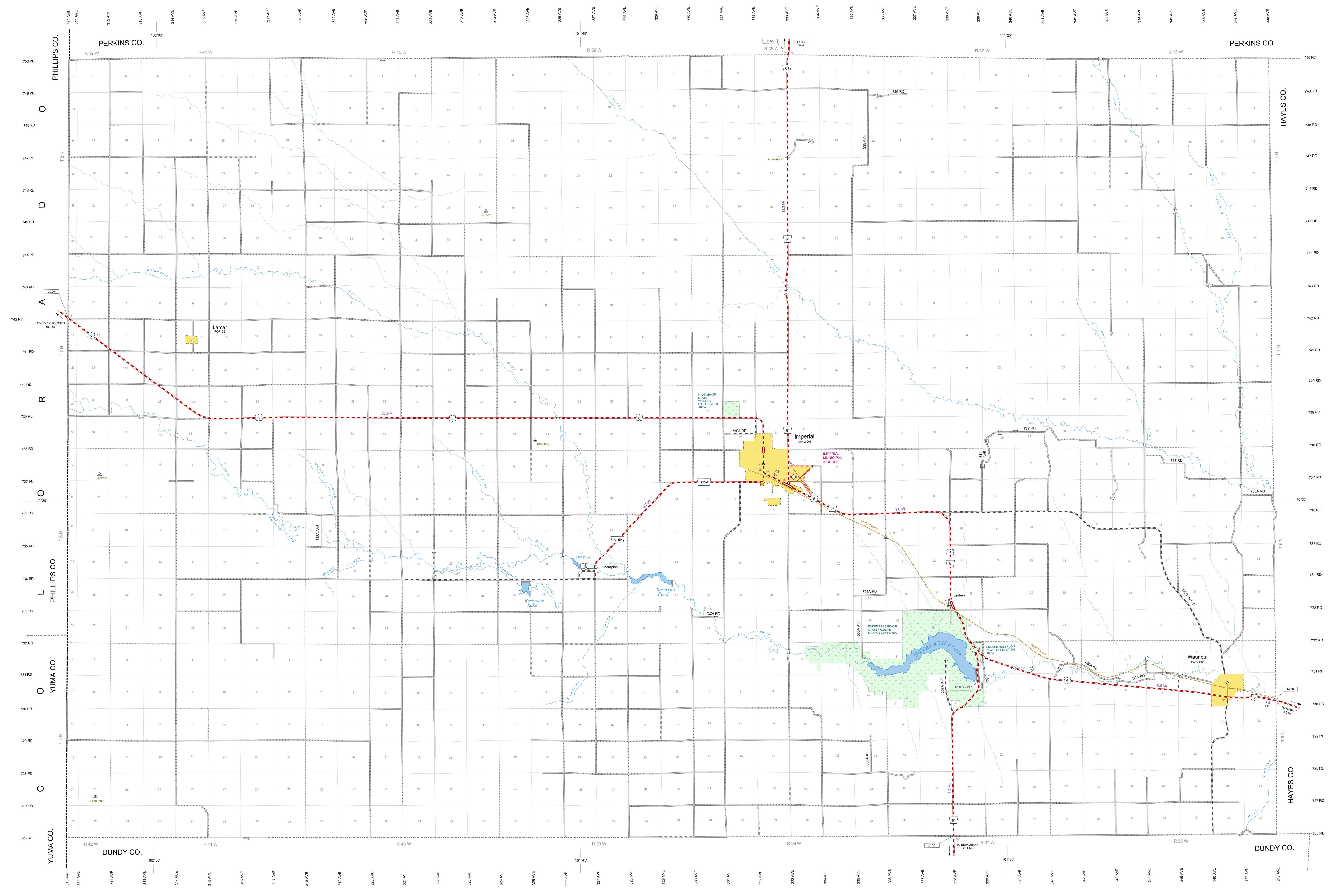
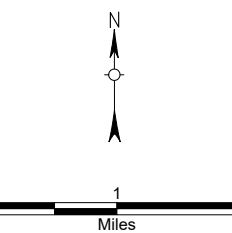
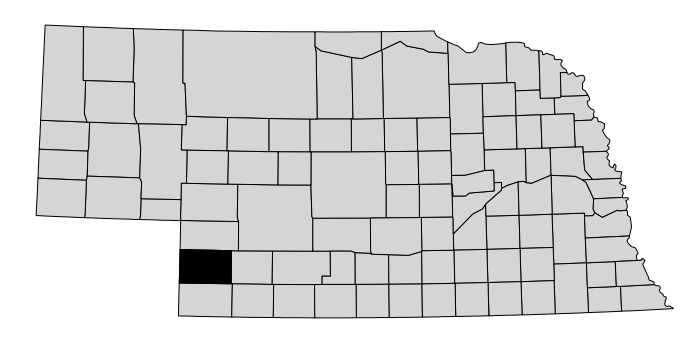


GENERAL HIGHWAY MAP CHASE COUNTY NEBRASKA 2022



- STATE HIGHWAYS**
 - Interstate Highway with Full Control of Access
 - Divided Highway
 - Multiple Lane Undivided Highway
 - Concrete / Bituk Surface
 - Asphalt / Bituminous Surface
 - Gravel or Crushed Rock
- LOCAL ROADS**
 - Concrete / Bituk Surface
 - Asphalt / Bituminous Surface
 - Gravel or Crushed Rock
 - Unimproved Road
 - Paved Road
 - Streets to City Center
- ROADWAY IDENTIFIERS**
 - ADAMS ROAD: 911 Number / Numbered Street
 - Village Numbered Route
 - U.S. Numbered Route
 - State Numbered Route
 - State Numbered Spur
 - State Numbered Link
 - Highway Reference Post Number
 - Interstate Exit Number
- STRUCTURAL FEATURES**
 - Highway Bridge
 - Pedestrian Underpass
 - Pedestrian Overpass
 - Cattle Guard
 - Railroad
 - Railroad Underpass
 - Railroad Overpass
- CULTURAL FEATURES**
 - State Capital
 - County Seat
 - Other Cities and Villages
 - Courthouse
 - Highway Maintenance Yard
 - Highway Station
 - Road Area
 - Commercial or Municipal Airport
- AREA FEATURES**
 - Indian Reservation Areas
 - National Areas
 - State Game and Parks Areas
 - Incorporated City or Village
 - Inset Map Boundary
- BOUNDARIES**
 - State Boundary
 - County Boundary
 - Township Line
 - Section Line
 - Algor Boundary
- MEASUREMENT SYSTEMS**
 - 100' 19" Latitude and Longitude
 - 417' 49" Transverse Station
 - Distances Between Points
- WATER FEATURES**
 - Wide River
 - River
 - Named Creek
 - Unnamed Creek
 - Vegetated Ditch or Canal
 - Reservoir, Pond, or Lake



This map is to be used for information only and is not intended to show ownership or to be definitive on which roads are public under Nebraska Law. The Nebraska Department of Transportation makes no warranties, guarantees or representations for the accuracy of this information and assumes no liability for errors or omissions. Any inaccuracies should be reported to NDOT.