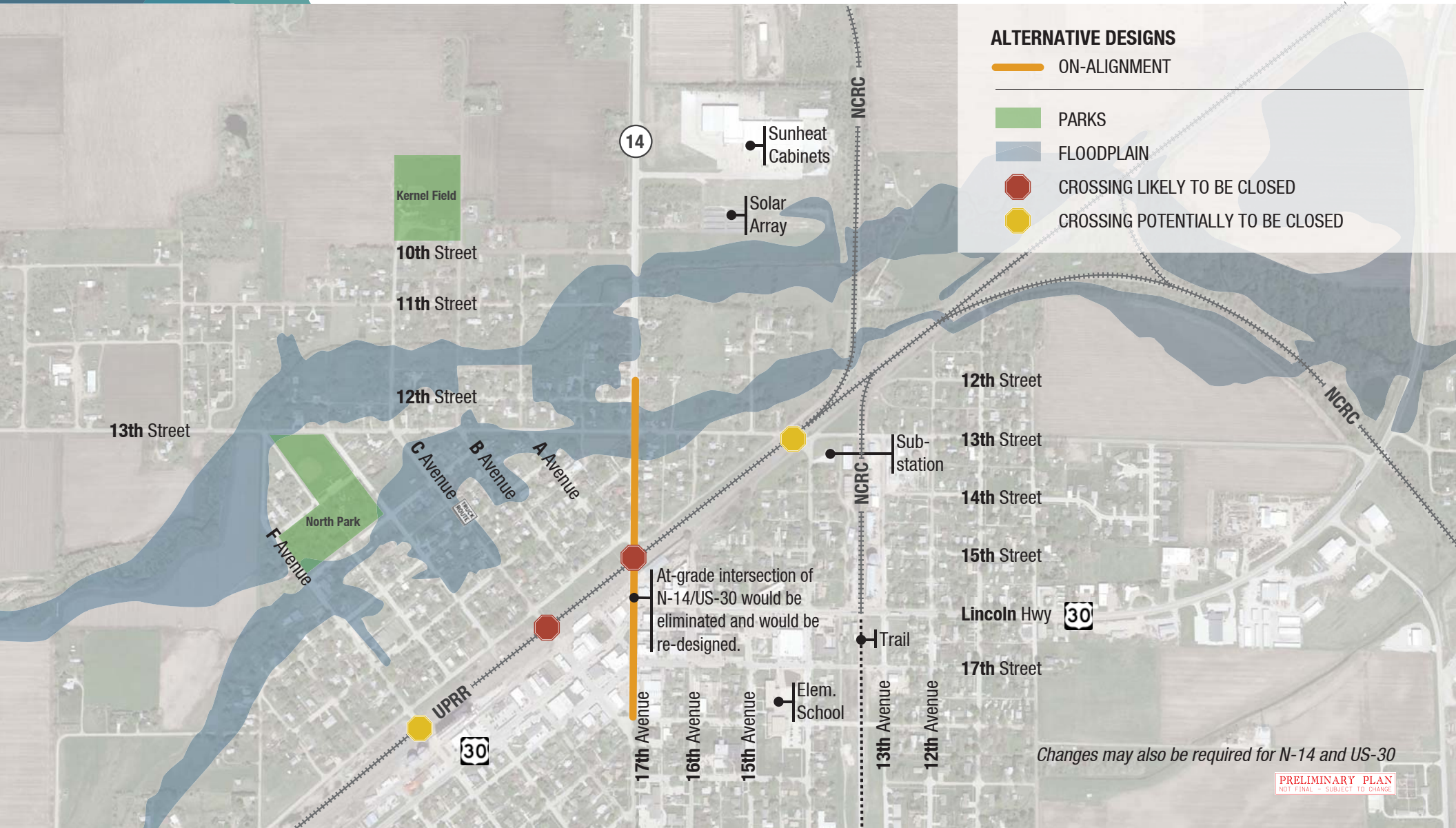


ON-ALIGNMENT ALTERNATIVE

RRZ-TMT-14-2(123); Central City Viaduct; CN: 42013



ALTERNATIVE DESIGNS

- ON-ALIGNMENT
- PARKS
- FLOODPLAIN
- CROSSING LIKELY TO BE CLOSED
- CROSSING POTENTIALLY TO BE CLOSED

14

Sunheat Cabinets

Solar Array

Kernel Field

10th Street

11th Street

12th Street

13th Street

North Park

C Avenue

B Avenue

A Avenue

F Avenue

NCRC

NCRC

NCRC

12th Street

13th Street

14th Street

15th Street

Lincoln Hwy 30

17th Street

Sub-station

Trail

Elem. School

17th Avenue

16th Avenue

15th Avenue

13th Avenue

12th Avenue

UPRR 30

At-grade intersection of N-14/US-30 would be eliminated and would be re-designed.

Changes may also be required for N-14 and US-30

PRELIMINARY PLAN
NOT FINAL - SUBJECT TO CHANGE