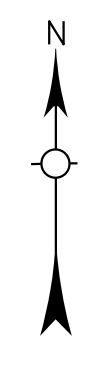


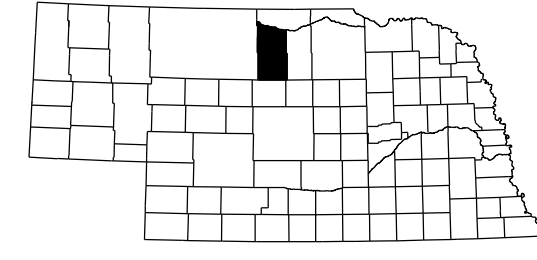
# GENERAL HIGHWAY MAP BROWN COUNTY NEBRASKA

PREPARED BY THE  
DEPARTMENT OF ROADS  
GIS/MAPPING SECTION  
IN COOPERATION WITH THE  
U.S. DEPARTMENT OF TRANSPORTATION  
FEDERAL HIGHWAY ADMINISTRATION  
2012

SCALE  
0 1 2 3 4 5 6 7 8 MILES  
0 1 2 3 4 5 6 7 8 KILOMETERS



LAMBERT CONFORMAL CONIC PROJECTION  
1983 NORTH AMERICAN DATUM  
NEBRASKA COORDINATE SYSTEM



## LEGEND

- |   |   |   |   |
|---|---|---|---|
| <ul style="list-style-type: none"> <li>Primitive Road</li> <li>Unimproved Road</li> <li>Gravel or Cracked Rock</li> <li>Asphalt/Bituminous Surface</li> <li>Multiple Lane Undivided Highway</li> <li>Asphalt/Bituminous Surface</li> <li>Concrete/Block Surface</li> <li>Multiple Lane Undivided Highway</li> <li>Concrete/Block Surface</li> <li>Divided Highway</li> <li>Interstate Highway with Full Control of Access</li> <li>911 NAMED/NUMBERED ROADS</li> <li>Highway Reference Post Number</li> <li>Interstate-Numbered Highway</li> <li>US-Numbered Highway</li> <li>State-Numbered Highway Spur</li> <li>State-Numbered Highway Link</li> <li>Interstate Exit Number</li> <li>Wide Stream</li> <li>Narrow Stream</li> <li>Irrigation Ditch</li> <li>Reservoir, Pond or Lake</li> <li>Reservoir, With Dam</li> </ul> | <ul style="list-style-type: none"> <li>Highway Bridge-Any Type</li> <li>Over 20' span</li> <li>Small Bridges-Closely Spaced</li> <li>Suburbs, Before being within 1/4 mile of a road</li> <li>General Bridge</li> <li>Truss Bridge</li> <li>Concrete/Block Surface</li> <li>Truss Bridge</li> <li>Concrete/Block Surface</li> <li>Concrete/Block Surface</li> <li>Concrete/Block Surface</li> <li>Railroad Overpass</li> <li>Railroad Underpass</li> <li>Railroad</li> <li>Dam with Road on Top</li> <li>Cattle Guard</li> <li>Dwelling</li> <li>Row of Dwellings</li> <li>Cemetery</li> <li>Church or Other Religious Institution</li> <li>Church with Cemetery Adjacent</li> <li>Business</li> <li>Industrial Plant</li> <li>Filling Station</li> <li>Grain Elevator</li> </ul> | <ul style="list-style-type: none"> <li>Aggregate Pit</li> <li>Agricultural Experimental Station</li> <li>Educational Institutions</li> <li>Public Use Area</li> <li>Recreational Facility</li> <li>Rest Area</li> <li>Ranger Station</li> <li>Fish Hatchery</li> <li>Community Hall</li> <li>Correctional Institution</li> <li>Tourist Court or Motel</li> <li>Monument-Small</li> <li>Museum</li> <li>Firestation</li> <li>Courthouse</li> <li>Post Office</li> <li>Highway Maintenance Yard</li> <li>Dump Area</li> <li>Sewage Disposal Plant</li> <li>Water Supply Stand Pipe</li> </ul> | <ul style="list-style-type: none"> <li>Radio or TV Station</li> <li>Weight Station or Port of Entry</li> <li>Commercial or Municipal Airport</li> <li>Airport with Paved Runways</li> <li>State Boundary</li> <li>County Boundary</li> <li>Township Line</li> <li>Section Line</li> <li>Corporate Limit Lines</li> <li>Parks and Other Reservations</li> <li>Boundary Limits of Area Shown in Enlargements Use enlargements for culture.</li> <li>State Capital</li> <li>County Seat</li> <li>Other Cities and Villages</li> <li>Incorporated City or Village</li> <li>Triangulation Station</li> <li>Points Between Which Distances Are Measured Indicated Thus</li> <li>Latitude and Longitude</li> </ul> |
|---|---|---|---|

DATE	REVISION
DEC. 2010	REVISION
2012	HWY. SUPERINTENDENT

KEY TO COUNTIES  
This map is to be used for information only and is not intended to show ownership or title boundaries on which roads are public under Nebraska Law. The Nebraska Department of Roads makes no warranty, representation or representation for the accuracy of this information and assumes no responsibility for errors or omissions. Any inaccuracies should be reported to NDOR.

