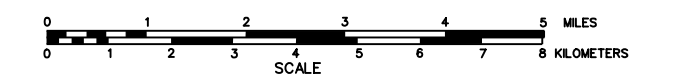


GENERAL HIGHWAY MAP THURSTON COUNTY NEBRASKA

PREPARED BY THE
DEPARTMENT OF ROADS
GIS/MAPPING SECTION
IN COOPERATION WITH THE
U.S. DEPARTMENT OF TRANSPORTATION
FEDERAL HIGHWAY ADMINISTRATION

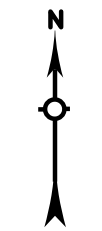
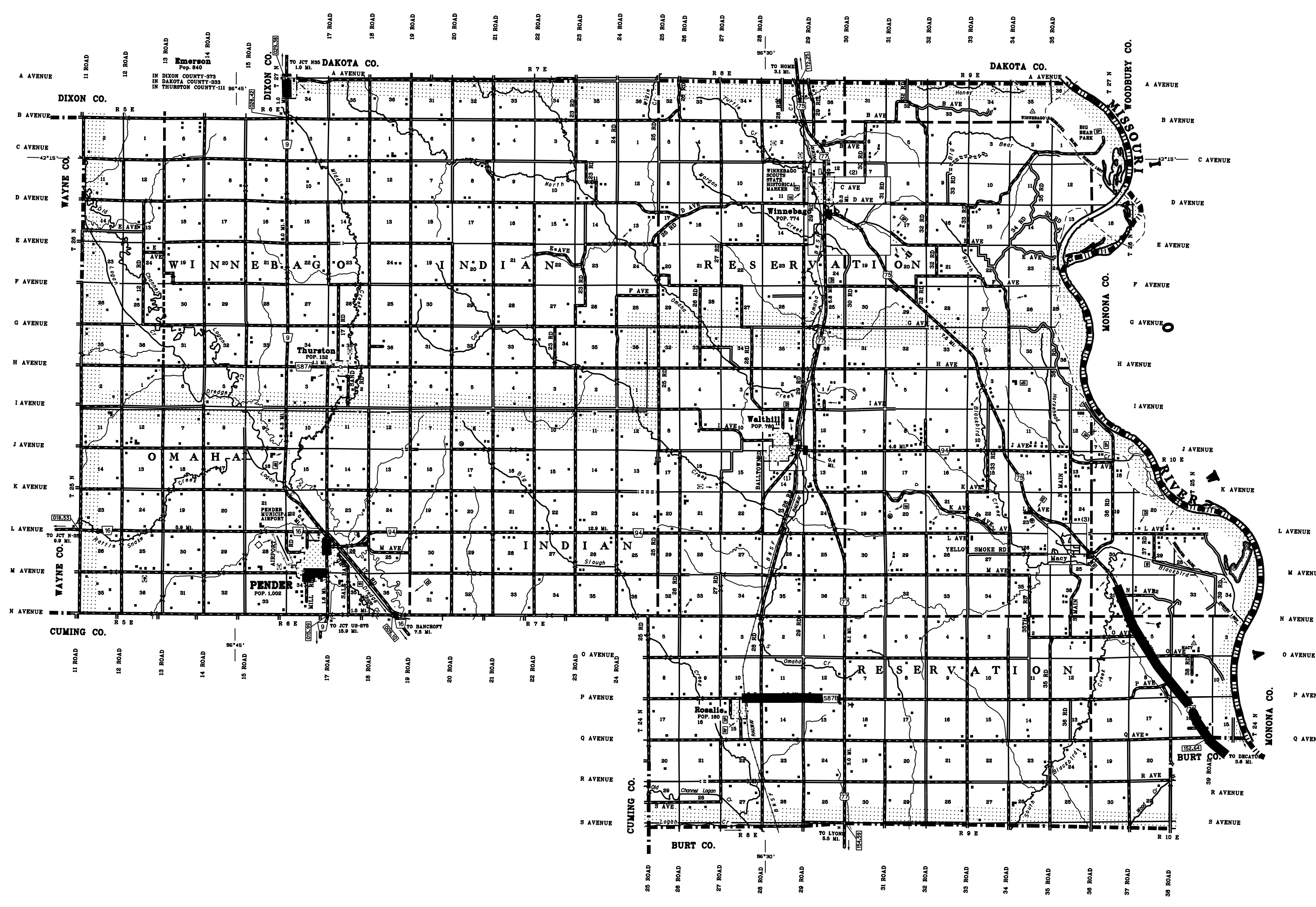
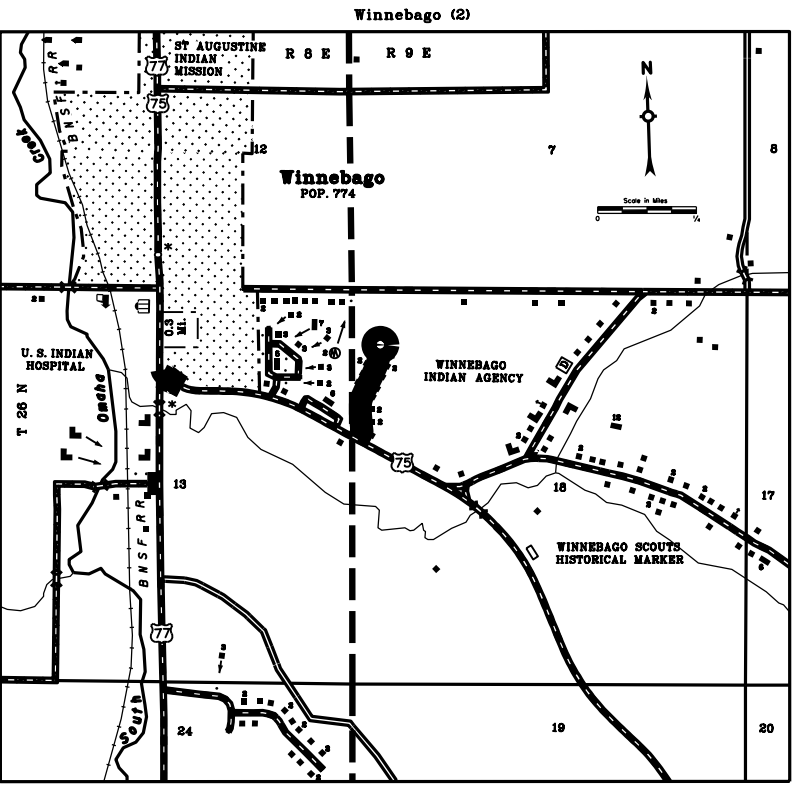
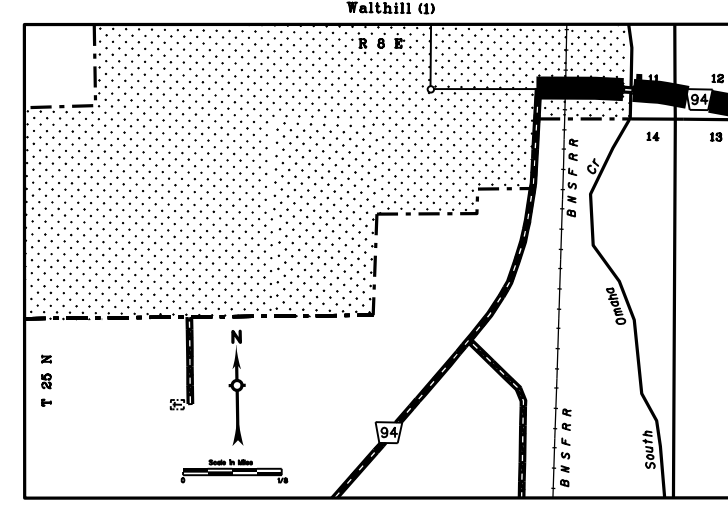


INVENTORY DATE:
2016

DATE	REVISION HISTORY	REVISION
APR 2016	COUNTY SUPERINTENDENT	
JAN 2008	GIS SYSTEM	

LEGEND

- | | | | |
|--|-------|-----------------------------------|-----|
| Primitive Road | 15511 | Filling Station | F |
| Unimproved Road | 15512 | Grain Elevator | E |
| Gravel or Crushed Rock | 15513 | Aggregate Pit | W |
| Asphalt/Bituminous Surface | 15514 | Agricultural Experimental Station | A |
| Multiple Lane Undivided Highway | 15515 | Educational Institution | ED |
| Concrete/Gravel Surface | 15516 | Public Use Area | PU |
| Multiple Lane Divided Highway | 15517 | Non-Residential Facilities | NR |
| Divided Highway | 15518 | State-Numbered Highway | SH |
| Interstate Highway with Full Control of Access | 15519 | State-Numbered Highway Spur | SHS |
| Side Road and Streets | 15520 | State-Numbered Highway Link | SHL |
| US Numbered Highway | 15521 | Highway Reference Post Number | HRP |
| Interstate-Numbered Highway | 15522 | Interstate Exit Number | IE |
| US Numbered Highway | 15523 | Small Bridge-Closely Spaced | SB |
| State-Numbered Highway | 15524 | Medium Bridge | MB |
| State-Numbered Highway Spur | 15525 | General Bridge | GB |
| State-Numbered Highway Link | 15526 | Truss Bridge | TB |
| Highway Reference Post Number | 15527 | Arch Bridge | AB |
| Interstate Exit Number | 15528 | Truss Bridge | TB |
| Small Bridge-Closely Spaced | 15529 | Arch Bridge | AB |
| Medium Bridge | 15530 | Truss Bridge | TB |
| General Bridge | 15531 | Arch Bridge | AB |
| Truss Bridge | 15532 | Truss Bridge | TB |
| Arch Bridge | 15533 | Arch Bridge | AB |
| Truss Bridge | 15534 | Truss Bridge | TB |
| Arch Bridge | 15535 | Arch Bridge | AB |
| Truss Bridge | 15536 | Truss Bridge | TB |
| Arch Bridge | 15537 | Arch Bridge | AB |
| Truss Bridge | 15538 | Truss Bridge | TB |
| Arch Bridge | 15539 | Arch Bridge | AB |
| Truss Bridge | 15540 | Truss Bridge | TB |
| Arch Bridge | 15541 | Arch Bridge | AB |
| Truss Bridge | 15542 | Truss Bridge | TB |
| Arch Bridge | 15543 | Arch Bridge | AB |
| Truss Bridge | 15544 | Truss Bridge | TB |
| Arch Bridge | 15545 | Arch Bridge | AB |
| Truss Bridge | 15546 | Truss Bridge | TB |
| Arch Bridge | 15547 | Arch Bridge | AB |
| Truss Bridge | 15548 | Truss Bridge | TB |
| Arch Bridge | 15549 | Arch Bridge | AB |
| Truss Bridge | 15550 | Truss Bridge | TB |
| Arch Bridge | 15551 | Arch Bridge | AB |
| Truss Bridge | 15552 | Truss Bridge | TB |
| Arch Bridge | 15553 | Arch Bridge | AB |
| Truss Bridge | 15554 | Truss Bridge | TB |
| Arch Bridge | 15555 | Arch Bridge | AB |
| Truss Bridge | 15556 | Truss Bridge | TB |
| Arch Bridge | 15557 | Arch Bridge | AB |
| Truss Bridge | 15558 | Truss Bridge | TB |
| Arch Bridge | 15559 | Arch Bridge | AB |
| Truss Bridge | 15560 | Truss Bridge | TB |
| Arch Bridge | 15561 | Arch Bridge | AB |
| Truss Bridge | 15562 | Truss Bridge | TB |
| Arch Bridge | 15563 | Arch Bridge | AB |
| Truss Bridge | 15564 | Truss Bridge | TB |
| Arch Bridge | 15565 | Arch Bridge | AB |
| Truss Bridge | 15566 | Truss Bridge | TB |
| Arch Bridge | 15567 | Arch Bridge | AB |
| Truss Bridge | 15568 | Truss Bridge | TB |
| Arch Bridge | 15569 | Arch Bridge | AB |
| Truss Bridge | 15570 | Truss Bridge | TB |
| Arch Bridge | 15571 | Arch Bridge | AB |
| Truss Bridge | 15572 | Truss Bridge | TB |
| Arch Bridge | 15573 | Arch Bridge | AB |
| Truss Bridge | 15574 | Truss Bridge | TB |
| Arch Bridge | 15575 | Arch Bridge | AB |
| Truss Bridge | 15576 | Truss Bridge | TB |
| Arch Bridge | 15577 | Arch Bridge | AB |
| Truss Bridge | 15578 | Truss Bridge | TB |
| Arch Bridge | 15579 | Arch Bridge | AB |
| Truss Bridge | 15580 | Truss Bridge | TB |
| Arch Bridge | 15581 | Arch Bridge | AB |
| Truss Bridge | 15582 | Truss Bridge | TB |
| Arch Bridge | 15583 | Arch Bridge | AB |
| Truss Bridge | 15584 | Truss Bridge | TB |
| Arch Bridge | 15585 | Arch Bridge | AB |
| Truss Bridge | 15586 | Truss Bridge | TB |
| Arch Bridge | 15587 | Arch Bridge | AB |
| Truss Bridge | 15588 | Truss Bridge | TB |
| Arch Bridge | 15589 | Arch Bridge | AB |
| Truss Bridge | 15590 | Truss Bridge | TB |
| Arch Bridge | 15591 | Arch Bridge | AB |
| Truss Bridge | 15592 | Truss Bridge | TB |
| Arch Bridge | 15593 | Arch Bridge | AB |
| Truss Bridge | 15594 | Truss Bridge | TB |
| Arch Bridge | 15595 | Arch Bridge | AB |
| Truss Bridge | 15596 | Truss Bridge | TB |
| Arch Bridge | 15597 | Arch Bridge | AB |
| Truss Bridge | 15598 | Truss Bridge | TB |
| Arch Bridge | 15599 | Arch Bridge | AB |
| Truss Bridge | 15600 | Truss Bridge | TB |
| Arch Bridge | 15601 | Arch Bridge | AB |
| Truss Bridge | 15602 | Truss Bridge | TB |
| Arch Bridge | 15603 | Arch Bridge | AB |
| Truss Bridge | 15604 | Truss Bridge | TB |
| Arch Bridge | 15605 | Arch Bridge | AB |
| Truss Bridge | 15606 | Truss Bridge | TB |
| Arch Bridge | 15607 | Arch Bridge | AB |
| Truss Bridge | 15608 | Truss Bridge | TB |
| Arch Bridge | 15609 | Arch Bridge | AB |
| Truss Bridge | 15610 | Truss Bridge | TB |
| Arch Bridge | 15611 | Arch Bridge | AB |
| Truss Bridge | 15612 | Truss Bridge | TB |
| Arch Bridge | 15613 | Arch Bridge | AB |
| Truss Bridge | 15614 | Truss Bridge | TB |
| Arch Bridge | 15615 | Arch Bridge | AB |
| Truss Bridge | 15616 | Truss Bridge | TB |
| Arch Bridge | 15617 | Arch Bridge | AB |
| Truss Bridge | 15618 | Truss Bridge | TB |
| Arch Bridge | 15619 | Arch Bridge | AB |
| Truss Bridge | 15620 | Truss Bridge | TB |
| Arch Bridge | 15621 | Arch Bridge | AB |
| Truss Bridge | 15622 | Truss Bridge | TB |
| Arch Bridge | 15623 | Arch Bridge | AB |
| Truss Bridge | 15624 | Truss Bridge | TB |
| Arch Bridge | 15625 | Arch Bridge | AB |
| Truss Bridge | 15626 | Truss Bridge | TB |
| Arch Bridge | 15627 | Arch Bridge | AB |
| Truss Bridge | 15628 | Truss Bridge | TB |
| Arch Bridge | 15629 | Arch Bridge | AB |
| Truss Bridge | 15630 | Truss Bridge | TB |
| Arch Bridge | 15631 | Arch Bridge | AB |
| Truss Bridge | 15632 | Truss Bridge | TB |
| Arch Bridge | 15633 | Arch Bridge | AB |
| Truss Bridge | 15634 | Truss Bridge | TB |
| Arch Bridge | 15635 | Arch Bridge | AB |
| Truss Bridge | 15636 | Truss Bridge | TB |
| Arch Bridge | 15637 | Arch Bridge | AB |
| Truss Bridge | 15638 | Truss Bridge | TB |
| Arch Bridge | 15639 | Arch Bridge | AB |
| Truss Bridge | 15640 | Truss Bridge | TB |
| Arch Bridge | 15641 | Arch Bridge | AB |
| Truss Bridge | 15642 | Truss Bridge | TB |
| Arch Bridge | 15643 | Arch Bridge | AB |
| Truss Bridge | 15644 | Truss Bridge | TB |
| Arch Bridge | 15645 | Arch Bridge | AB |
| Truss Bridge | 15646 | Truss Bridge | TB |
| Arch Bridge | 15647 | Arch Bridge | AB |
| Truss Bridge | 15648 | Truss Bridge | TB |
| Arch Bridge | 15649 | Arch Bridge | AB |
| Truss Bridge | 15650 | Truss Bridge | TB |
| Arch Bridge | 15651 | Arch Bridge | AB |
| Truss Bridge | 15652 | Truss Bridge | TB |
| Arch Bridge | 15653 | Arch Bridge | AB |
| Truss Bridge | 15654 | Truss Bridge | TB |
| Arch Bridge | 15655 | Arch Bridge | AB |
| Truss Bridge | 15656 | Truss Bridge | TB |
| Arch Bridge | 15657 | Arch Bridge | AB |
| Truss Bridge | 15658 | Truss Bridge | TB |
| Arch Bridge | 15659 | Arch Bridge | AB |
| Truss Bridge | 15660 | Truss Bridge | TB |
| Arch Bridge | 15661 | Arch Bridge | AB |
| Truss Bridge | 15662 | Truss Bridge | TB |
| Arch Bridge | 15663 | Arch Bridge | AB |
| Truss Bridge | 15664 | Truss Bridge | TB |
| Arch Bridge | 15665 | Arch Bridge | AB |
| Truss Bridge | 15666 | Truss Bridge | TB |
| Arch Bridge | 15667 | Arch Bridge | AB |
| Truss Bridge | 15668 | Truss Bridge | TB |
| Arch Bridge | 15669 | Arch Bridge | AB |
| Truss Bridge | 15670 | Truss Bridge | TB |
| Arch Bridge | 15671 | Arch Bridge | AB |
| Truss Bridge | 15672 | Truss Bridge | TB |
| Arch Bridge | 15673 | Arch Bridge | AB |
| Truss Bridge | 15674 | Truss Bridge | TB |
| Arch Bridge | 15675 | Arch Bridge | AB |
| Truss Bridge | 15676 | Truss Bridge | TB |
| Arch Bridge | 15677 | Arch Bridge | AB |
| Truss Bridge | 15678 | Truss Bridge | TB |
| Arch Bridge | 15679 | Arch Bridge | AB |
| Truss Bridge | 15680 | Truss Bridge | TB |
| Arch Bridge | 15681 | Arch Bridge | AB |
| Truss Bridge | 15682 | Truss Bridge | TB |
| Arch Bridge | 15683 | Arch Bridge | AB |
| Truss Bridge | 15684 | Truss Bridge | TB |
| Arch Bridge | 15685 | Arch Bridge | AB |
| Truss Bridge | 15686 | Truss Bridge | TB |
| Arch Bridge | 15687 | Arch Bridge | AB |
| Truss Bridge | 15688 | Truss Bridge | TB |
| Arch Bridge | 15689 | Arch Bridge | AB |
| Truss Bridge | 15690 | Truss Bridge | TB |
| Arch Bridge | 15691 | Arch Bridge | AB |
| Truss Bridge | 15692 | Truss Bridge | TB |
| Arch Bridge | 15693 | Arch Bridge | AB |
| Truss Bridge | 15694 | Truss Bridge | TB |
| Arch Bridge | 15695 | Arch Bridge | AB |
| Truss Bridge | 15696 | Truss Bridge | TB |
| Arch Bridge | 15697 | Arch Bridge | AB |
| Truss Bridge | 15698 | Truss Bridge | TB |
| Arch Bridge | 15699 | Arch Bridge | AB |
| Truss Bridge | 15700 | Truss Bridge | TB |



LAMBERT CONFORMAL CONIC PROJECTION
1983 NORTH AMERICAN DATUM
NEBRASKA COORDINATE SYSTEM



www.transportation.nebraska.gov

STATE HIGHWAYS CONNECTED TO 2016
AERIAL PHOTOGRAPHY TAKEN IN 2014

This map is to be used for information only and is not intended to show ownership or to be definitive in which state law applies. The Nebraska Department of Roads makes no warranties, guarantees or representations for the accuracy of the information and assumes no liability for errors or omissions. Any inaccuracies should be reported to NDOR.