

# GENERAL HIGHWAY MAP PERKINS COUNTY NEBRASKA

PREPARED BY THE  
DEPARTMENT OF ROADS  
GIS/MAPPING SECTION  
IN COOPERATION WITH THE  
U.S. DEPARTMENT OF TRANSPORTATION  
FEDERAL HIGHWAY ADMINISTRATION

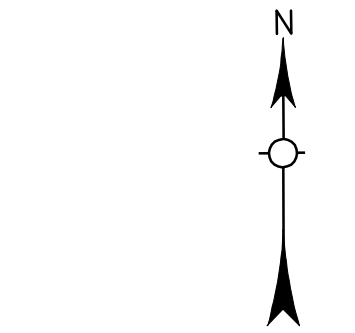
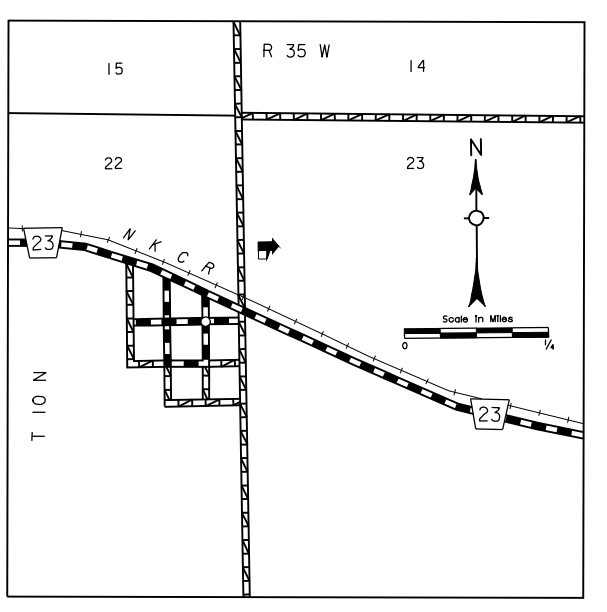
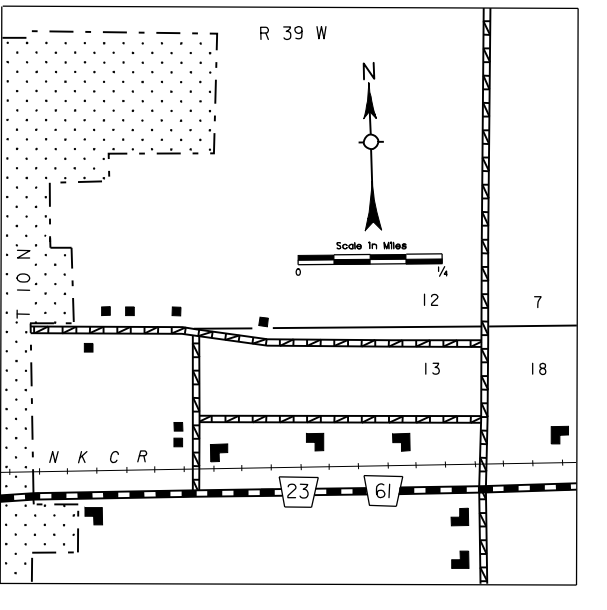
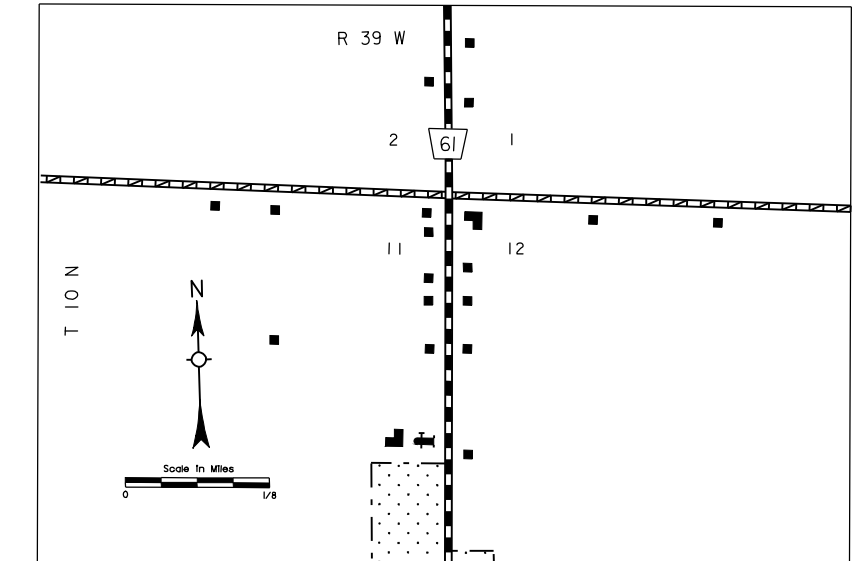
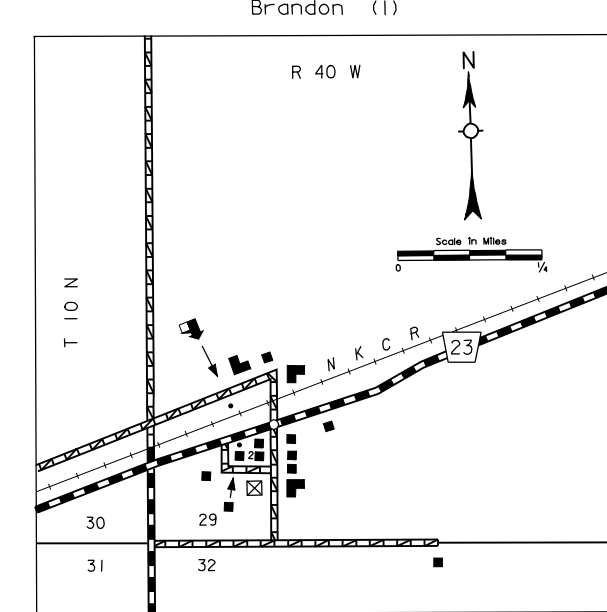
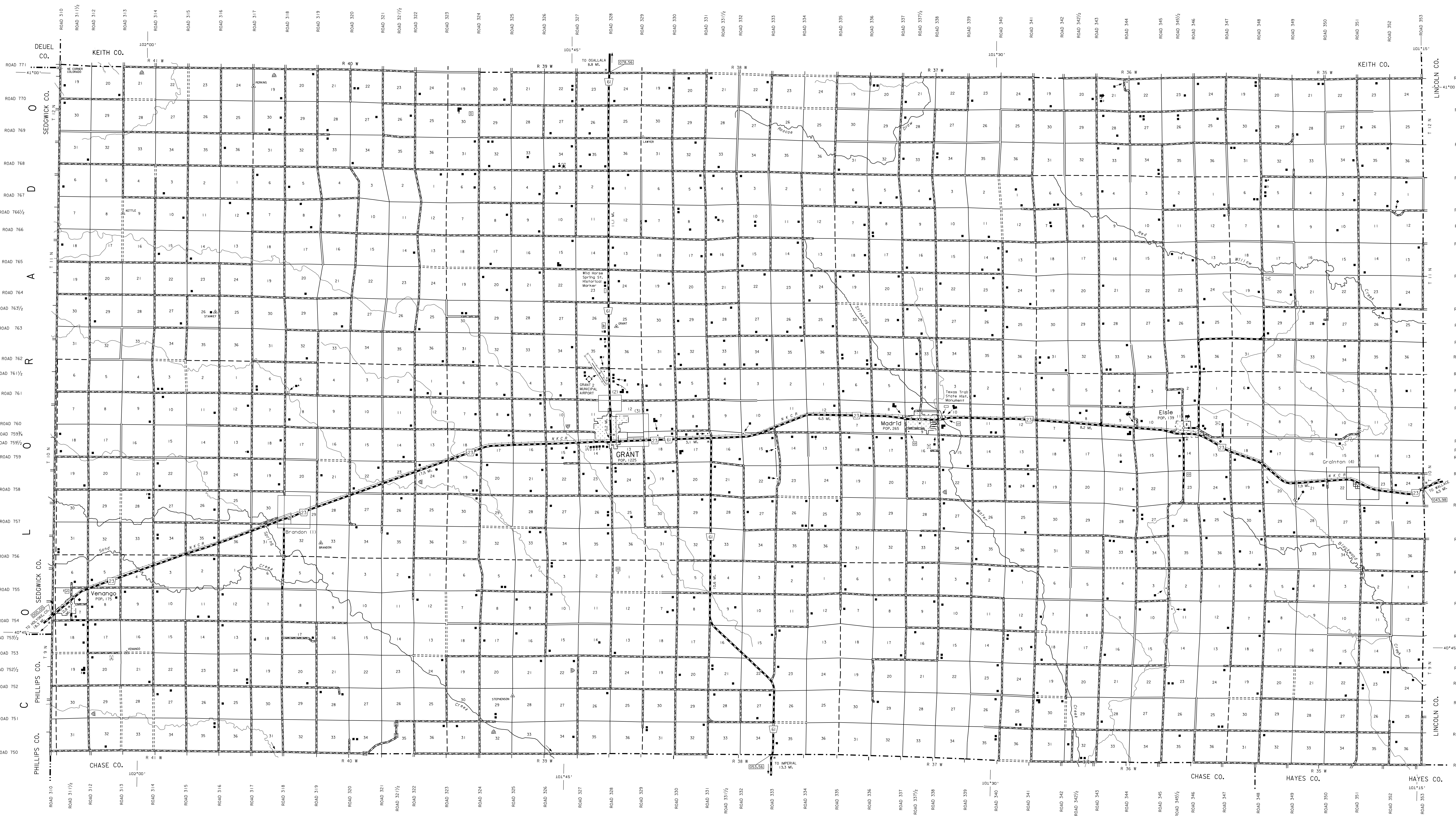


INVENTORY DATE:  
2004

NAME	REVISION DATE	REVISION
C. VEKRNA	MARCH 2006	COUNTY
L. GOLDSMITH	SEPT. 2006	INT. IMPROVEMENTS
L. GOLDSMITH	SEPT. 2006	'91 SYSTEM

## LEGEND

- Primitive Road.....
- Unimproved Road.....
- Gravel or Gravel Road.....
- Asphalt/Paved Surface.....
- Multiple Lane Undivided Highway.....
- Asphalt/Paved Surface.....
- Concrete/Brick Surface.....
- Multiple Lane Undivided Highway.....
- Concrete/Brick Surface.....
- Divided Highway.....
- Interstate Highway with Full Control of Access.....
- Side Roads and Streets.....
- 911 Numbered Highway.....
- Interstate Numbered Highway.....
- State-Numbered Highway.....
- State-Numbered Highway Spur.....
- State-Numbered Highway Link.....
- Highway Reference Post Number.....
- Interstate Exit Number.....
- Wide Street.....
- Narrow Stream.....
- Irrigation Ditch.....
- Reservoir, Pond or Lake.....
- Reservoir with Dam.....
- Highway Bridge-Any Type (over 20' span).....
- Small Bridges-Closely Spaced (spans less than 20' with bridge on ground).....
- General Bridge (over 20' span-concrete).....
- Arch Bridge.....
- Truss Bridge.....
- Pedestrian Underpass.....
- Railroad Overpass.....
- Railroad Underpass.....
- Railroad.....
- Dam with Road on Top.....
- Gate Guard.....
- Dwelling.....
- Row of Dwellings.....
- Cemetery.....
- Church or Other Religious Institution.....
- Church with Cemetery Adjacent.....
- Business.....
- Industrial Plant.....
- Filling Station.....
- Grain Elevator.....
- Aggregate Pit.....
- Agricultural Experiment Station.....
- Educational Institutions.....
- Public Use Area.....
- Recreational Facilities.....
- Rest Area.....
- Ranger Station.....
- Fish Hatchery.....
- Community Hall.....
- Correctional Institution.....
- Tourist Court or Motel.....
- Museum.....
- Monument-Shell.....
- Firestation.....
- Courthouse.....
- Armory.....
- Road Office.....
- Highway Maintenance Yard.....
- Dump Area.....
- Sewage Disposal Plant.....
- Water Supply Stand Pipe.....
- Radio or TV Station.....
- Relief Station or Part of Entry.....
- Commercial or Municipal Airport.....
- Airport with Paved Runways.....
- State Boundary.....
- County Boundary.....
- Township Line.....
- Section Line.....
- Corporate Limit Lines.....
- Parks and Other Reservations.....
- Boundary Limits of Area Shown in Entirety (see legend for entire).....
- State Capital.....
- County Seat.....
- Other Cities and Villages.....
- Incorporated City or Village.....
- Triangulation Station.....
- Points Between Which Distances Are Measured Indicated Thus.....
- Latitude and Longitude.....



LAMBERT CONFORMAL CONIC PROJECTION  
1983 NORTH AMERICAN DATUM  
NEBRASKA COORDINATE SYSTEM

