

GENERAL HIGHWAY MAP MORRILL COUNTY NORTH HALF NEBRASKA

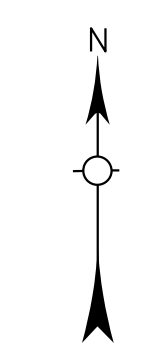
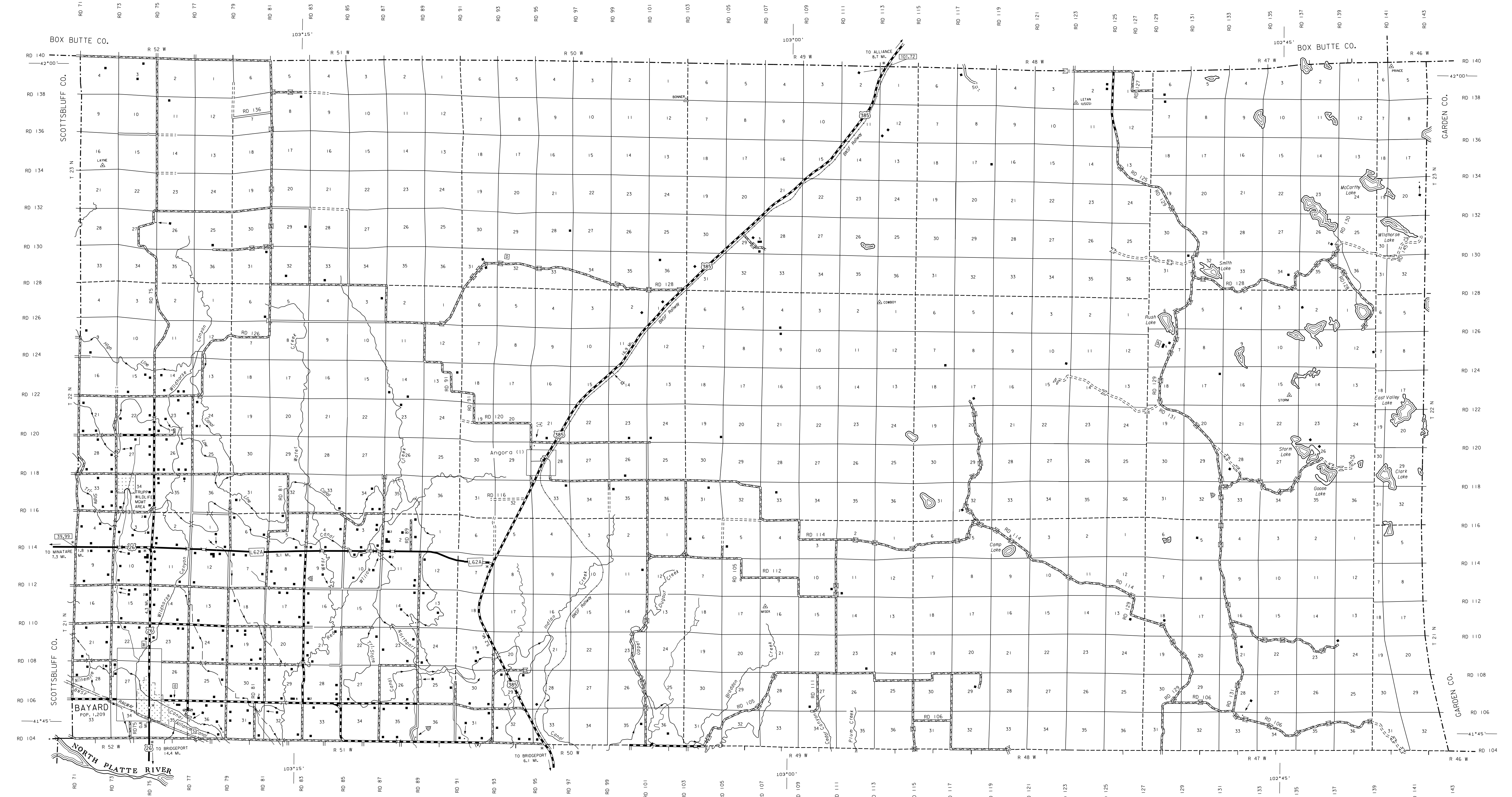
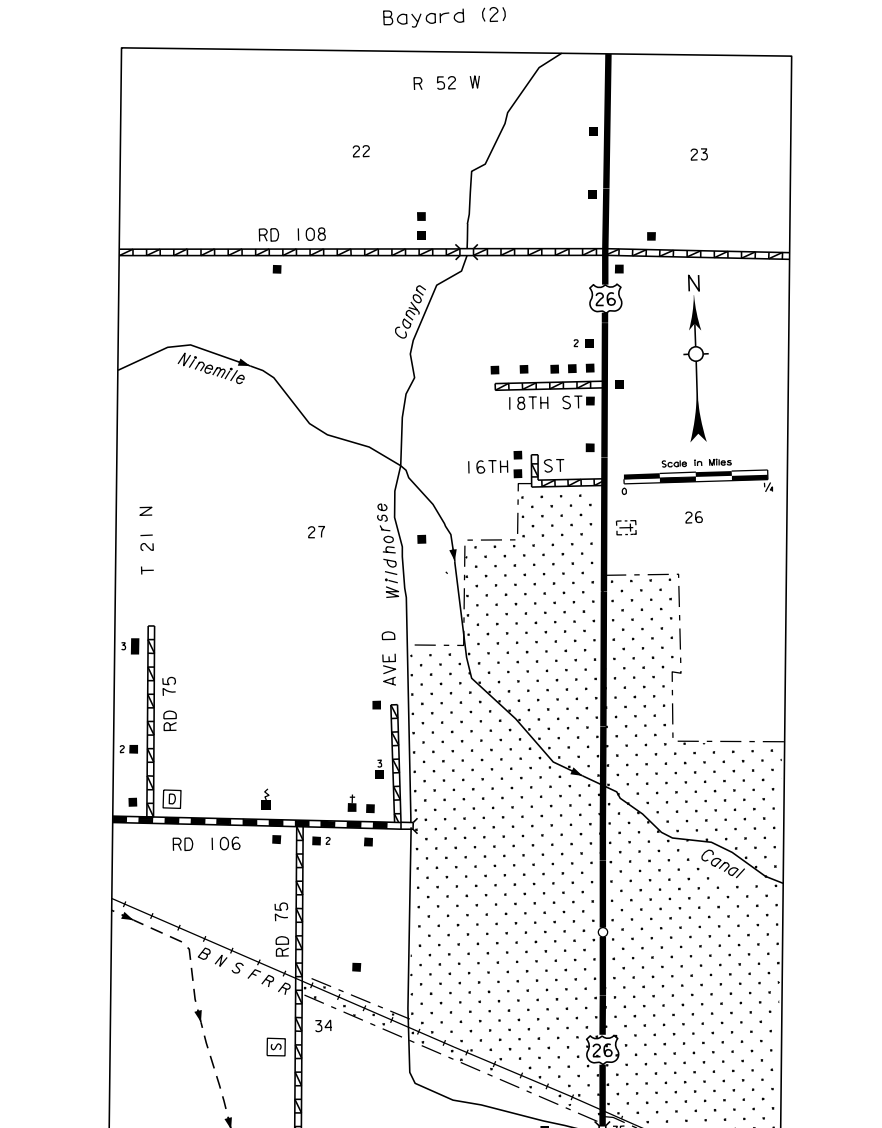
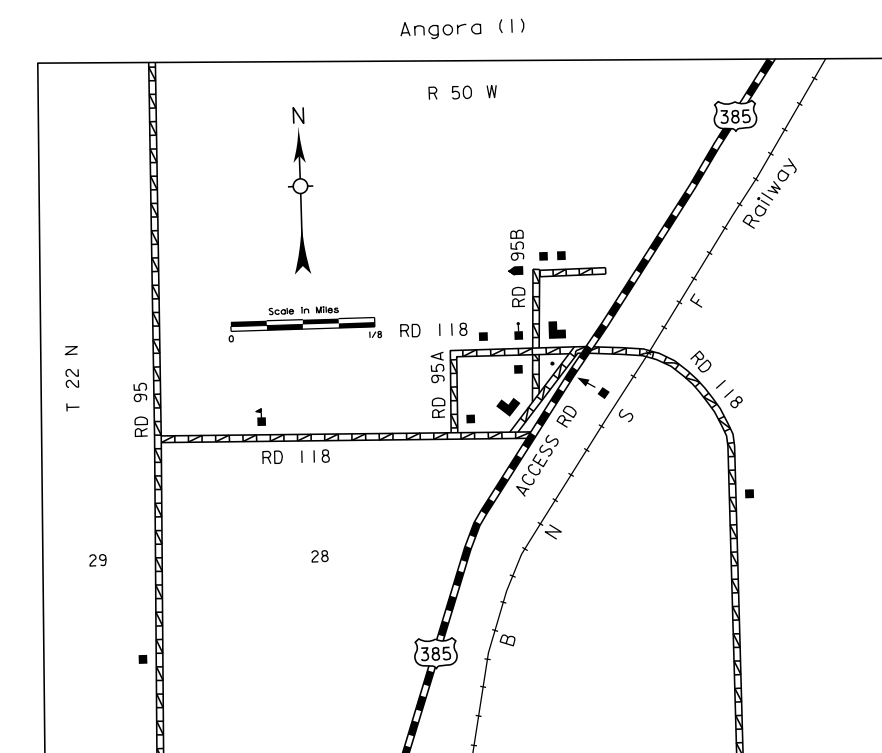
PREPARED BY THE
DEPARTMENT OF ROADS
GIS/MAPPING SECTION
IN COOPERATION WITH THE
U.S. DEPARTMENT OF TRANSPORTATION
FEDERAL HIGHWAY ADMINISTRATION
2015



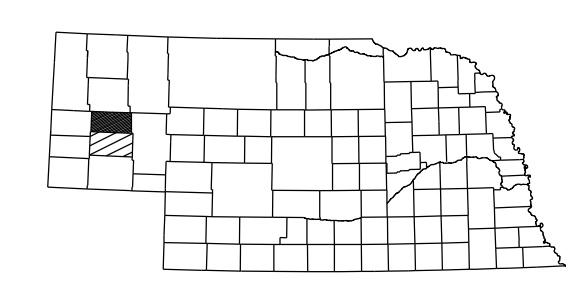
REVISION HISTORY		
NAME	DATE	REVISION
L. GULLUM/TH	AUGUST 2006	911 SYSTEM
L. GULLUM/TH	DECEMBER 2008	911 SYSTEM
L. GULLUM/TH	JULY 2014	County
L. GULLUM/TH	JANUARY 2014	County Split with Morrill

LEGEND

- Primitive Road
- Unimproved Road
- Gravel or Crushed Rock
- Asphalt/Bituminous Surface
- Multiple Lane Undivided Highway
- Asphalt/Bituminous Surface
- Concrete/Brick Surface
- Multiple Lane Undivided Highway
- Divided Highway
- Interstate Highway with Full Control of Access
- Side Roads and Streets
- 911 NAMED/Numbered Roads
- Interstate Numbered Highway
- US-Numbered Highway
- State-Numbered Highway
- State-Numbered Highway Spur
- State-Numbered Highway Link
- Highway Reference Post Number
- Interstate Exit Number
- Wide Stream
- Narrow Stream
- Irrigation Ditch
- Reservoir, Pond or Lake
- Reservoir with Dam
- Highway Bridge-Any Type
- Small Bridges-Closely Spaced
- General Bridge
- Arch Bridge
- Truss Bridge
- Restriction Underpass
- Footbridge
- Railroad Overpass
- Railroad Underpass
- Railroad
- Dam with Road on Top
- Center Guard
- Row of Dwellings
- Cemetery
- Church or Other Religious Institution
- Church with Cemetery Adjacent
- Hospital
- Business
- Industrial Plant
- Filling Station
- Grain Elevator
- Aggregate Pile
- Agricultural Experimental Station
- Educational Institutions
- Public Use Area
- Recreational Facilities
- Rest Area
- Ranger Station
- Fish Hatchery
- Community Hall
- Correctional Institution
- Tourist Court or Motel
- Monument-Small
- Museum
- Firestation
- Courthouse
- Army
- Post Office
- Highway Maintenance Yard
- Dump Area
- Sewage Disposal Plant
- Water Supply Stand Pipe
- Radio or TV Station
- Weight Station or Port of Entry
- Commercial or Municipal Airport
- Airport with Paved Runways
- State Boundary
- County Boundary
- Township Line
- Section Line
- Corporate Limit Lines
- Parks and Other Reservations
- Boundary Letters of Area Shown in Enlargements Use enlargements for culture.
- State Capital
- County Seat
- Other Cities and Villages
- Incorporated City or Village
- Triangulation Station
- Points Between Which Distances Are Measured Indicated Thus
- Latitude and Longitude



LAMBERT CONFORMAL CONIC PROJECTION
1983 NORTH AMERICAN DATUM
NEBRASKA COORDINATE SYSTEM



KEY TO COUNTIES



This map is to be used for information only and is not intended to show ownership or to be definitive on which roads are public under Nebraska Law. The Nebraska Department of Roads makes no warranties, guarantees or representations for the accuracy of this information and assumes no liability for errors or omissions. Any inconsistencies should be reported to NDOR.

POPULATION AS OF 2010 CENSUS
STATE HIGHWAYS CORRECTED TO 2014
DIGITAL AERIAL PHOTOGRAPHY (DAP) TAKEN 2012