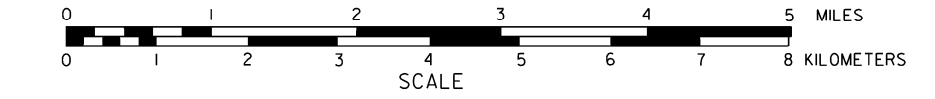


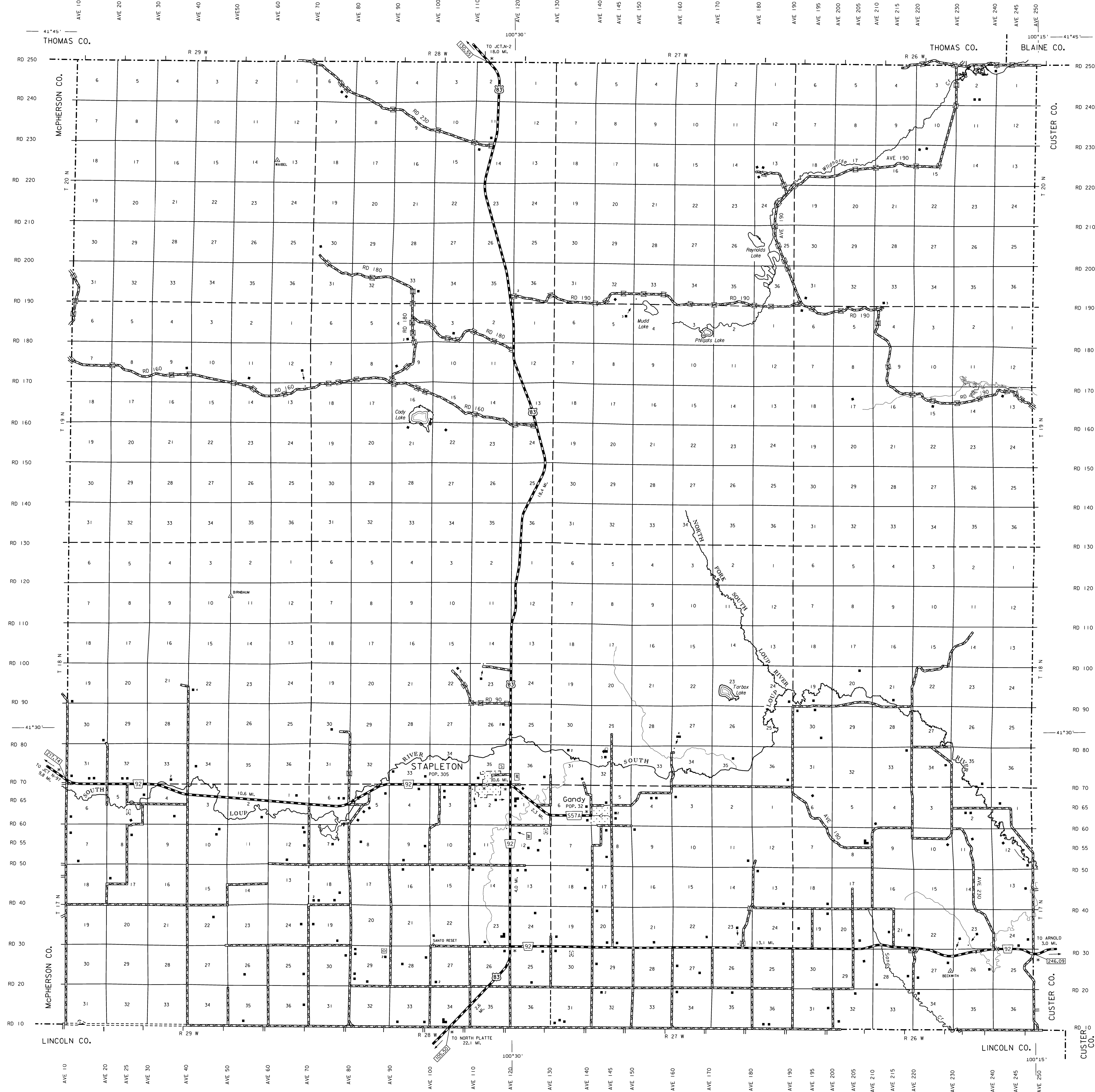
# GENERAL HIGHWAY MAP LOGAN COUNTY NEBRASKA

PREPARED BY THE  
DEPARTMENT OF ROADS  
GIS/MAPPING SECTION  
IN COOPERATION WITH THE  
U.S. DEPARTMENT OF TRANSPORTATION  
FEDERAL HIGHWAY ADMINISTRATION



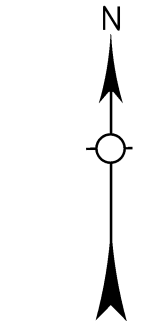
INVENTORY DATE:  
2014

REVISION HISTORY	
DATE	REVISION
SEPTEMBER 2014	COUNTY SURVEY
JANUARY 2013	COUNTY

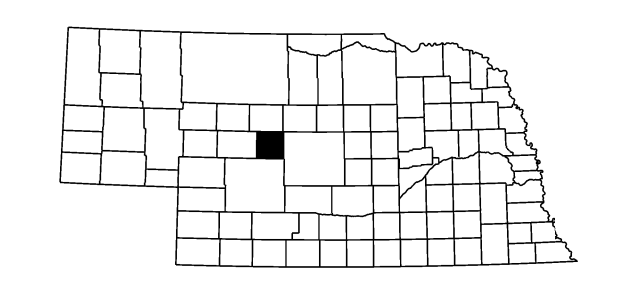


### LEGEND

- Primitive Road
- Unimproved Road
- Gravel or Crushed Road
- Asphalt/Bituminous Surface
- Multiple Lane Undivided Highway
- Asphalt/Bituminous Surface
- Concrete/Brick Surface
- Multiple Lane Undivided Highway
- Concrete/Brick Surface
- Divided Highway
- Side Roads and Streets
- Interstate Highway with Full Control of Access
- State-Numbered Highway
- US-Numbered Highway
- State-Numbered Highway
- State-Numbered Highway Spur
- State-Numbered Highway Link
- Highway Reference Post Number
- Interstate Exit Number
- Wide Stream
- Narrow Stream
- Irrigation Ditch
- Reservoir, Pond or Lake
- Reservoir, With Dam
- Highway Bridge-Any Type
- Small Bridges-Closely Spaced
- General Bridge
- Arch Bridge
- Truss Bridge
- Passerion Underpass
- Railroad Overpass
- Railroad Underpass
- Railroad
- Dam with Road on Top
- Dwelling
- Row of Dwellings
- Cemetery
- Church or Other Religious Institution
- Church with Cemetery Adjacent
- Hospital
- Business
- Industrial Plant
- Filling Station
- Grain Elevator
- Aggregate Pit
- Agricultural Experimental Station
- Educational Institutions
- Public Use Area
- Recreational Facilities
- Rest Area
- Ranger Station
- Fish Hatchery
- Community Hall
- Correctional Institution
- Tourist Court or Motel
- Monument-Small
- Museum
- Fire Station
- Courthouse
- Army
- Post Office
- Highway Maintenance Yard
- Commuter or Municipal Airport
- Airport with Paved Runways
- State Boundary
- County Boundary
- Township Line
- Section Line
- Corporate Limit Lines
- Parks and Other Reservations
- Boundary Limits of Area Shown in Enclosures Use enclosures for cultural
- State Capital
- County Seat
- Other Cities and Villages
- Incorporated City or Village
- Triangulation Station
- Points Between Which Distances Are Measured Indicated Thus
- Latitude and Longitude



LAMBERT CONFORMAL CONIC PROJECTION  
1983 NORTH AMERICAN DATUM  
NEBRASKA COORDINATE SYSTEM



KEY TO COUNTIES

This map is to be used for information only and is not intended to show ownership or to be definitive on which roads are public or private. Under State Law, the Nebraska Department of Roads makes no warranty, guarantee or representation as to the accuracy of this information and assumes no liability for errors or omissions. Any inaccuracies should be reported to NDOR.

