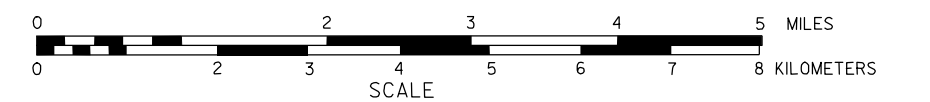


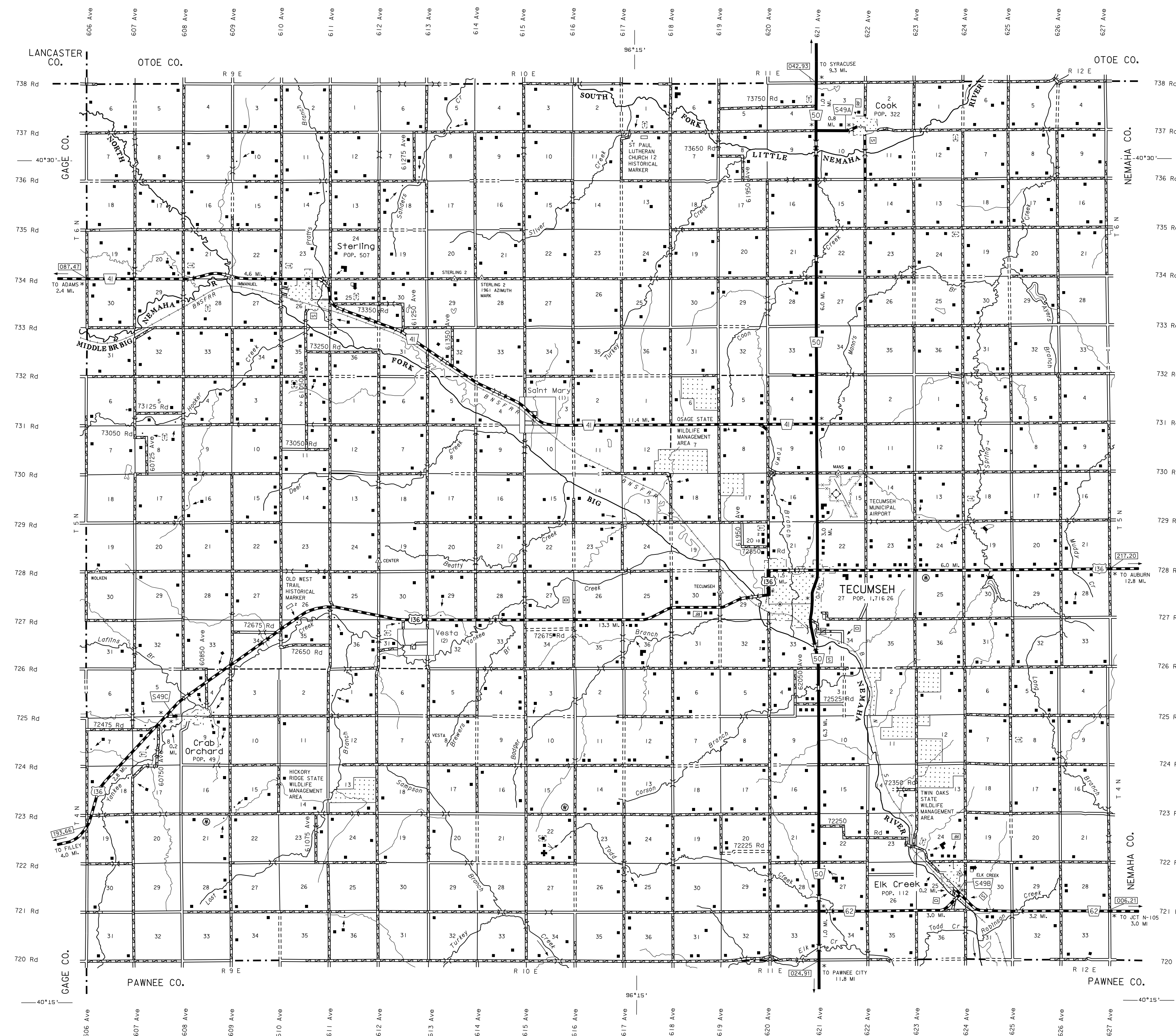
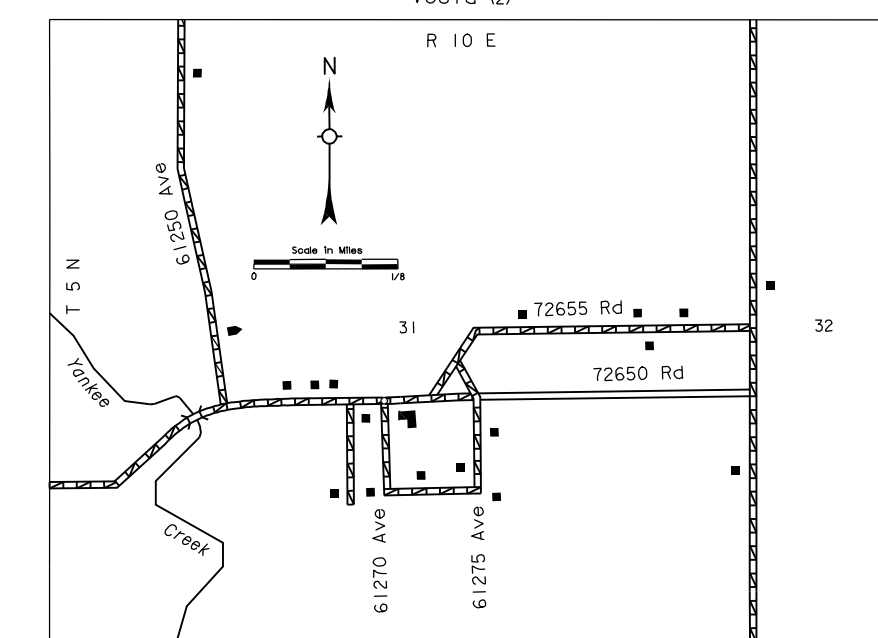
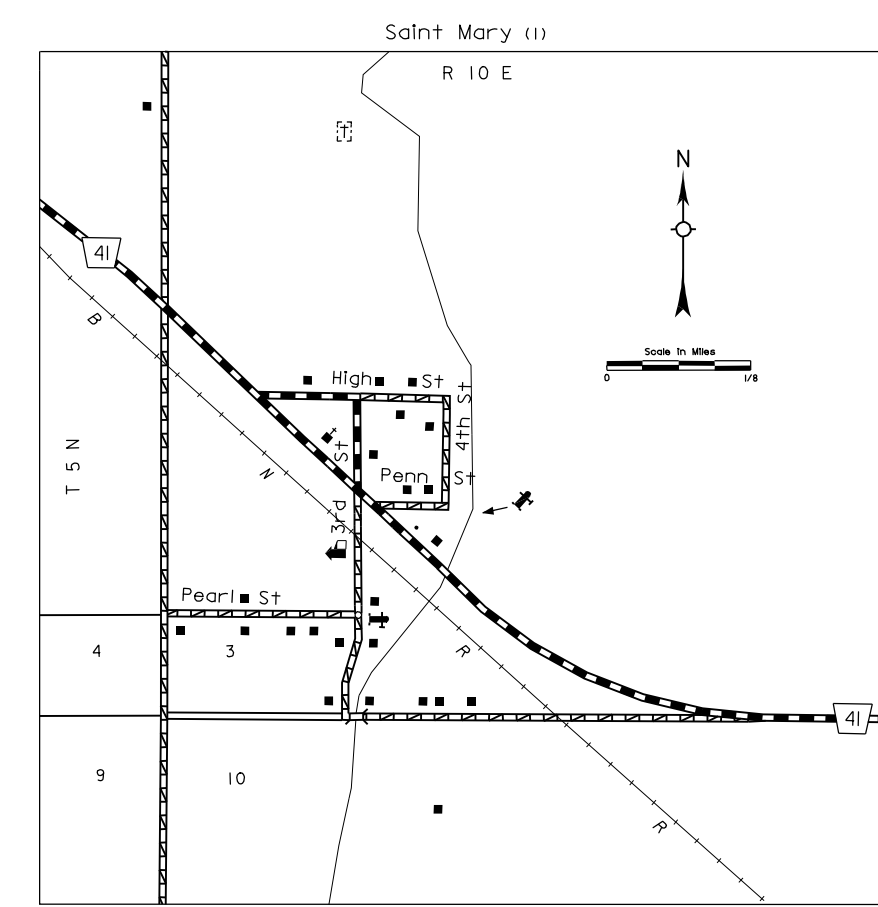
# GENERAL HIGHWAY MAP JOHNSON COUNTY NEBRASKA

PREPARED BY THE  
DEPARTMENT OF ROADS  
GIS/MAPPING SECTION  
IN COOPERATION WITH THE  
U.S. DEPARTMENT OF TRANSPORTATION  
FEDERAL HIGHWAY ADMINISTRATION



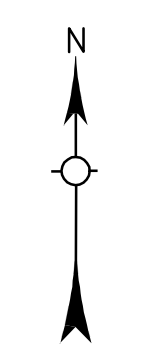
INVENTORY DATE:  
**1995**

REVISION HISTORY		
NAME	DATE	REVISION
K. FLORES	1997	COUNTY
L. WILLIAMS	OCTOBER 2001	CHANGES
L. GODSMITH	AUGUST 2003	911 SYSTEM
L. GODSMITH	JUNE 2006	911 SYSTEM



### LEGEND

- Primitive Road.....
- Unimproved Road.....
- Gravel or Crushed Rock.....
- Asphalt/Bituminous Surface.....
- Multiple Lane Undivided Highway.....
- Asphalt/Bituminous Surface.....
- Concrete/Asphalt Surface.....
- Multiple Lane Divided Highway.....
- Interstate Highway with Full Control of Access.....
- Side Roads and Streets.....
- 911 NAMED/Numbered Roads.....
- Interstate-Numbered Highway.....
- US-Numbered Highway.....
- State-Numbered Highway Spur.....
- State-Numbered Highway Link.....
- Highway Reference Post Number.....
- Interstate Exit Number.....
- Wide Stream.....
- Narrow Stream.....
- Irrigation Ditch.....
- Reservoir, Pond or Lake.....
- Reservoir, With Dam.....
- Highway Bridge-Any Type.....
- Lower 20 Speed.....
- Small Bridges-Closely Spaced.....
- Locations Indicate Where Signs with Bridges are Grouped.....
- General Bridge @ Wood, Stone, Concrete.....
- Arch Bridge.....
- Truss Bridge.....
- Pedestrian Underpass.....
- Railroad Overpass.....
- Railroad Underpass.....
- Railroad.....
- Cattle Guard.....
- Dwelling.....
- Row of Dwellings.....
- Cemetery.....
- Church or Other Religious Institution.....
- Church with Cemetery Adjacent.....
- Hospital.....
- Business.....
- Industrial Plant.....
- Filling Station.....
- Grain Elevator.....
- Aggregate Pit.....
- Agricultural Experimental Station.....
- Educational Institutions.....
- Public Use Area.....
- Recreational Facilities.....
- Rest Area.....
- Ranger Station.....
- Fish Hatchery.....
- Community Hall.....
- Correctional Institution.....
- Tourist Court or Motel.....
- Monument-Small.....
- Museum.....
- Firestation.....
- Courthouse.....
- Armory.....
- Post Office.....
- Highway Maintenance Yard.....
- Dump Area.....
- Sewage Disposal Plant.....
- Water Supply Stand Pipe.....
- Radio or TV Station.....
- Weight Station or Part of Entry.....
- Commercial or Municipal Airport.....
- Airport with Paved Runways.....
- State Boundary.....
- County Boundary.....
- Township Line.....
- Section Line.....
- Corporate Limit Lines.....
- Parks and Other Reservations.....
- Boundary Limits of Area Shown in Enumeration's Use Enlargement for Surface.....
- State Capital.....
- County Seat.....
- Other Cities and Villages.....
- Incorporated City or Village.....
- Triangulation Station.....
- Points Between Which Distances are Measured Indicated Thus.....
- Latitude and Longitude.....



LAMBERT CONFORMAL CONIC PROJECTION  
1983 NORTH AMERICAN DATUM  
NEBRASKA COORDINATE SYSTEM

