

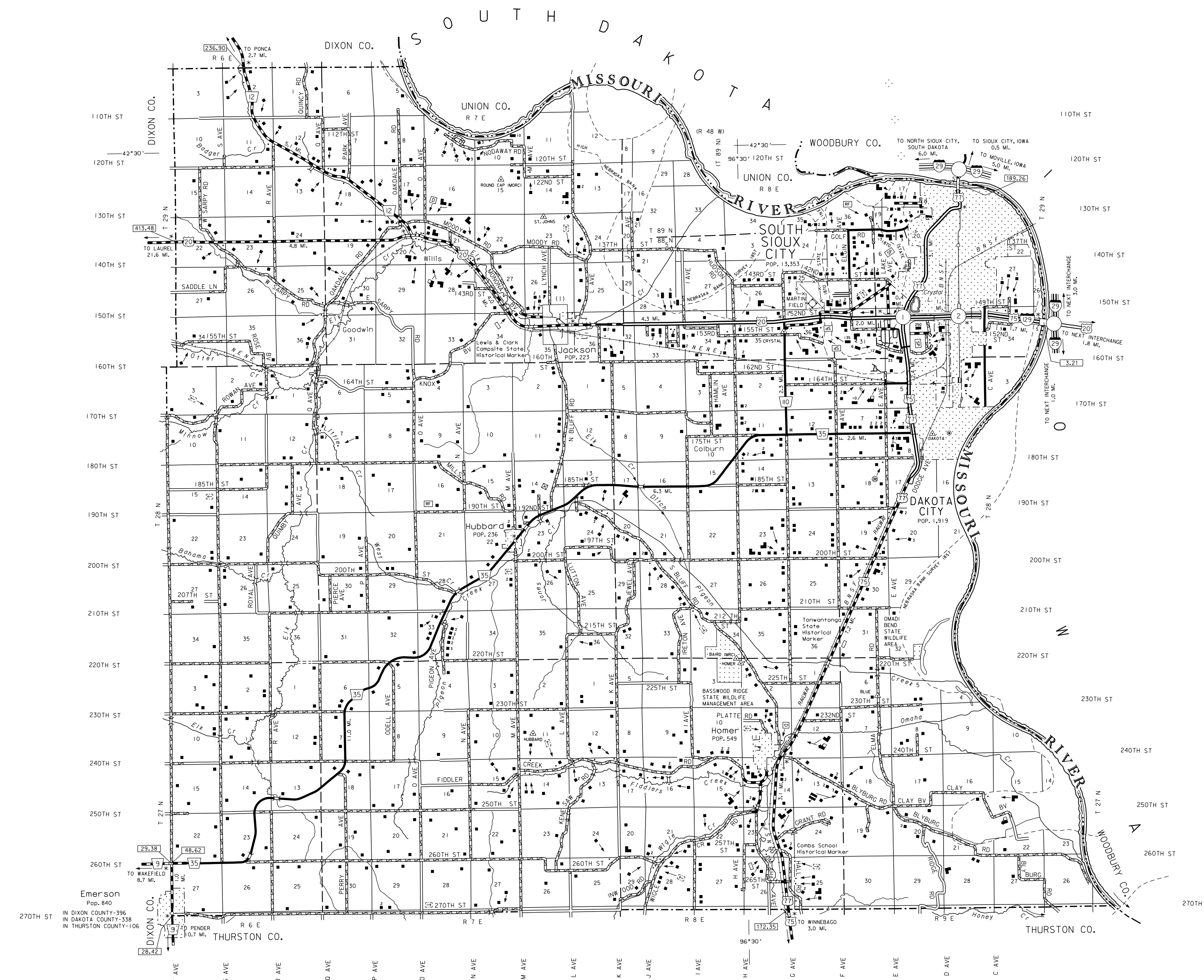
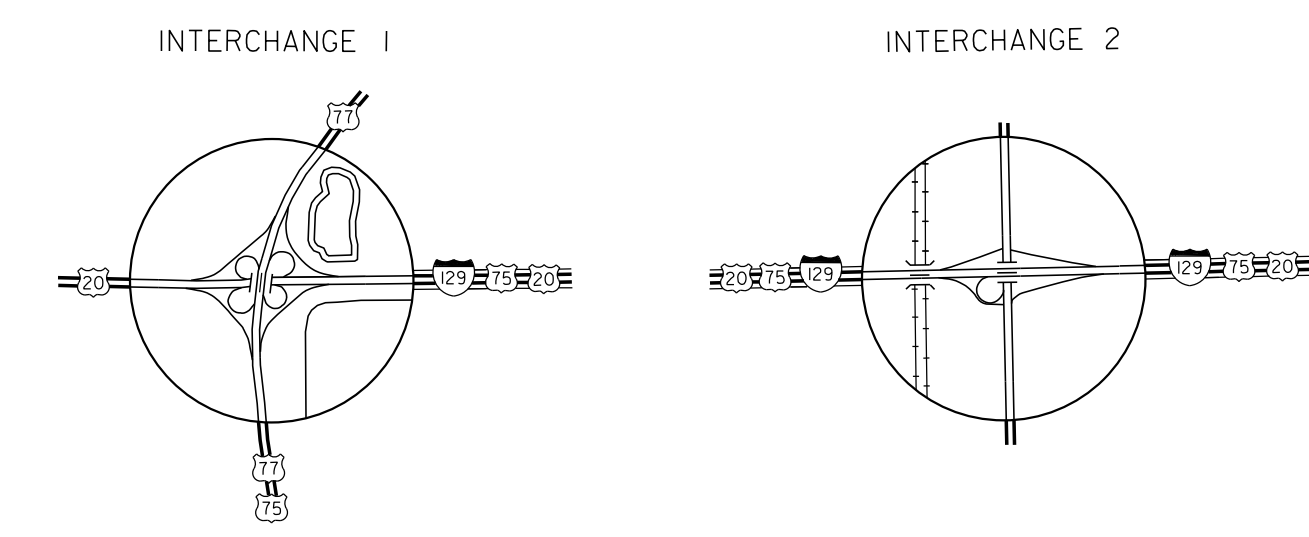
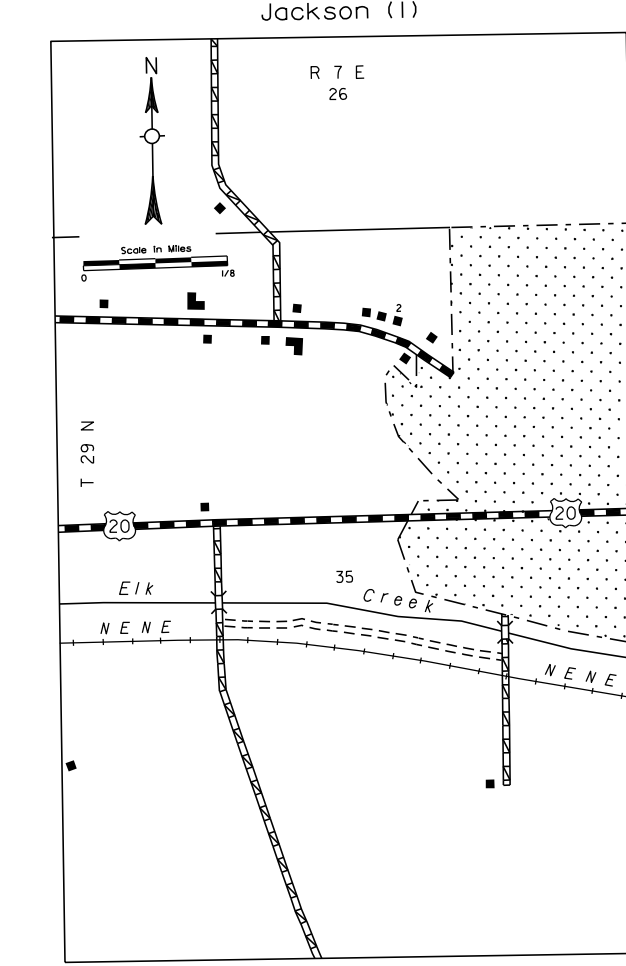
GENERAL HIGHWAY MAP DAKOTA COUNTY NEBRASKA

PREPARED BY THE
DEPARTMENT OF ROADS
GIS/MAPPING SECTION
IN COOPERATION WITH THE
U.S. DEPARTMENT OF TRANSPORTATION
FEDERAL HIGHWAY ADMINISTRATION



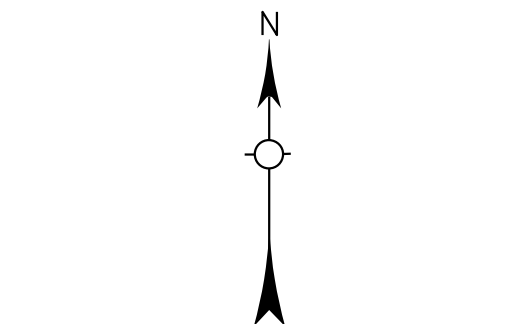
INVENTORY DATE:
2002

REVISION HISTORY		
NAME	DATE	REVISION
L. COLSMITH	04-07-03	STL SYSTEM
E. YESARNA	Oct. 2004	COUNTY
M. MOORE	06/23/11	REF. ALIGNMENT
	SEPT. 2012	JACKSON CO.
	OCT. 2012	DAKOTA CITY, E.L.

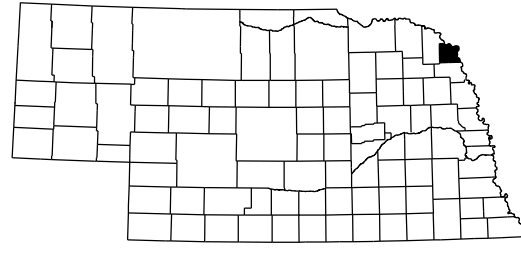


LEGEND

Primitive Road	Filling Station
Unimproved Road	Grain Elevator
Gravel or Crushed Rock	Aggregate Pile
Asphalt Bituminous Surface	Agricultural Experimental Station
Multiple Lane Undivided Highway	Educational Institutions
Asphalt Bituminous Surface	Public Use Area
Concrete/Brick Surface	Some athletic grounds, swimming pool, etc.
Multiple Lane Undivided Highway	Recreational Facilities
Concrete/Brick Surface	Homeless Res. country club, fairgrounds, etc.
Divided Highway	Rail Area
Interstate Highway with Full Control of Access	Ranger Station
Side Roads and Streets	Flax Hatchery
US-Numbered Highway	Community Hall
Interstate-Numbered Highway	Correctional Institution
State-Numbered Highway	Township Court or Motel
State-Numbered Highway Spur	Museum
State-Numbered Highway Link	Fire Station
Highway Reference Post Number	Courthouse
Interstate Exit Number	Armory
Wide Stream	Post Office
Narrow Stream	Highway Maintenance Yard
Irrigation Ditch	Dump Area
Reservoir, Pond or Lake	Sewage Disposal Plant
Reservoir, With Dam	Water Supply Stone Pipe
Highway Bridge-Any Type	Radio or TV Station
Lower 20' span	Weight Station or Point of Entry
Small Bridges-Closely Spaced	Commercial or Municipal Airport
100' or more between them, which bridges are grouped	Airport with Paved Runways
General Bridge	State Boundary
Arch Bridge	County Boundary
Truss Bridge	Township Line
Pedestrian Underpass	Section Line
Railroad Overpass	Corporate Limit Lines
Railroad Underpass	Parks and Other Reservations
Railroad	Boundary Limits of Area Shown in Engineer's Use arrangements for water
Dam with Road on Top	State Capital
Cattle Guard	County Seat
Dwelling	Other Cities and Villages
Row of Dwellings	Incorporated City or Village
Church or Other Religious Institution	Triangulation Station
Church with Cemetery Adjacent	Points Between Which Distances Are Measured Indicated Thus
Hospital	Latitude and Longitude
Business	
Industrial Plant	



LAMBERT CONFORMAL CONIC PROJECTION
1883 NORTH AMERICAN DATUM
NEBRASKA COORDINATE SYSTEM



KEY TO COUNTIES
This map is to be used for information only and is not intended to show, describe or to be definitive on which roads are public or private. The Nebraska Department of Roads makes no warranty, guarantee or representation for the accuracy of this information and accepts no liability for errors or omissions. Any inconsistencies should be reported to NDOR.

POPULATION AS OF 2010 CENSUS
STATE HIGHWAYS CORRECTED TO 2005
DIGITAL AERIAL PHOTOGRAPHY (DOADI)