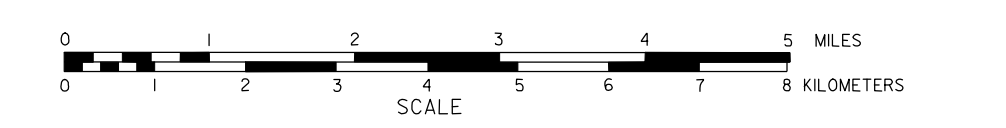


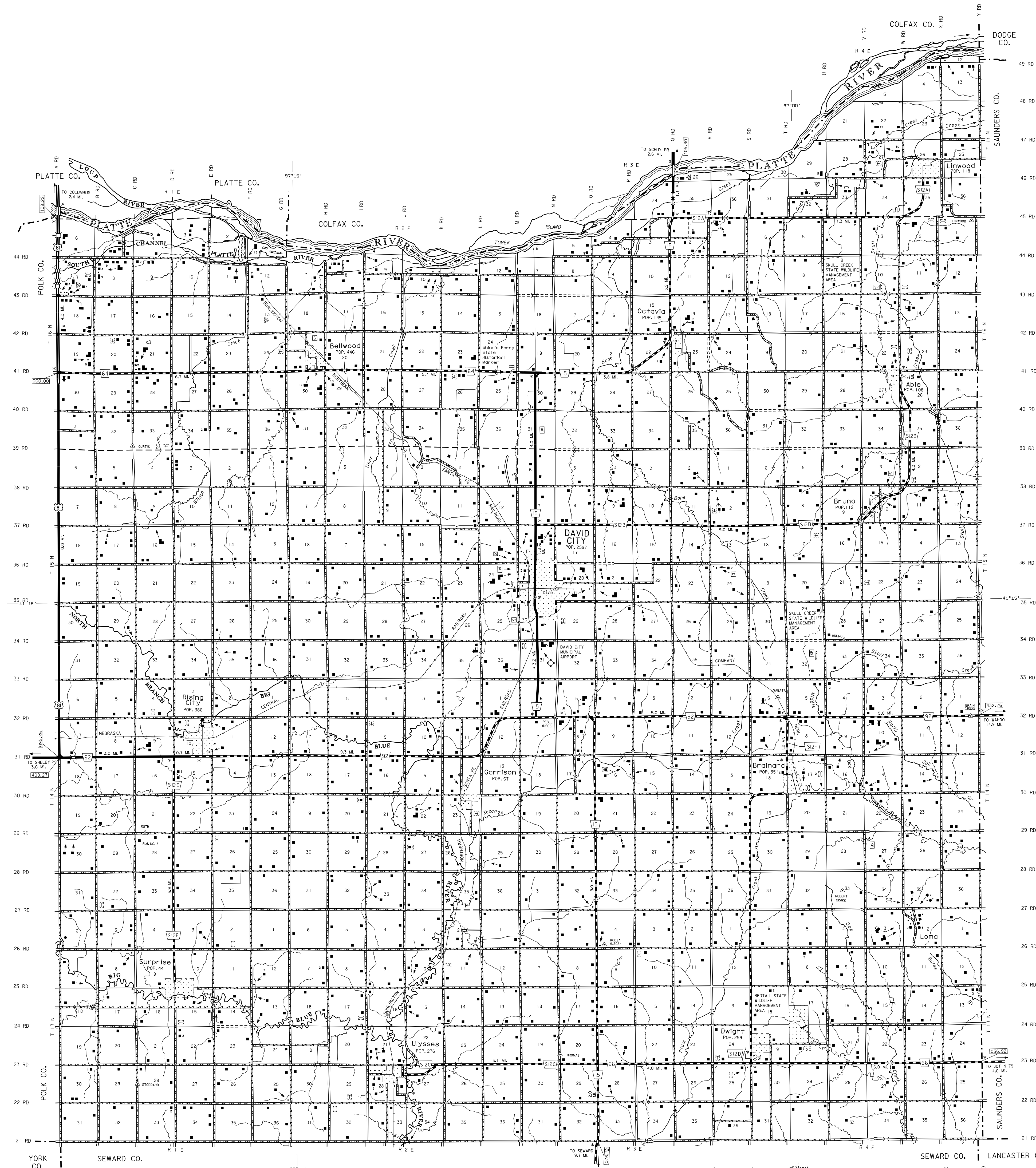
GENERAL HIGHWAY MAP BUTLER COUNTY NEBRASKA

PREPARED BY THE
DEPARTMENT OF ROADS
GIS/MAPPING SECTION
IN COOPERATION WITH THE
U.S. DEPARTMENT OF TRANSPORTATION
FEDERAL HIGHWAY ADMINISTRATION



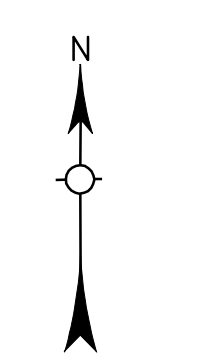
INVENTORY DATE:
1995

NAME	DATE	REVISION
L. GOLDSMITH	NOV. 2000	911 SYSTEM
C. KESKINL	JAN. 2004	COUNTY LINE
R. BRAUN	FEB. 2006	S. RD. ASPHALT DWIGHT-BRAUN
L. GOLDSMITH	APRIL 2008	911 SYSTEM

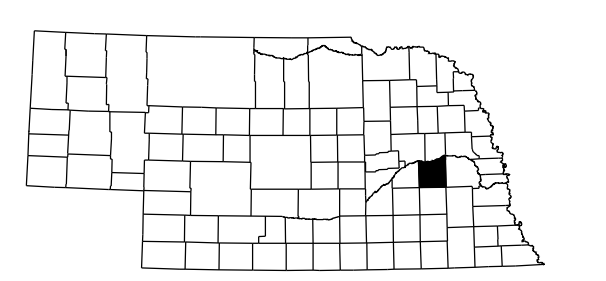


LEGEND

- | | | | |
|--|-------|--|-------|
| Primitive Road | | Filling Station | |
| Unimproved Road | | Grain Elevator | |
| Gravel or Crushed Rock | | Aggregate Pit | |
| Asphalt/Bituminous Surface | | Agricultural Experimental Station | |
| Multiple Lane Undivided Highway | | Educational Institutions | |
| Asphalt/Bituminous Surface | | Public Use Area | |
| Concrete/Brick Surface | | Recreational Facilities | |
| Multiple Lane Undivided Highway | | Rest Area | |
| Concrete/Brick Surface | | Ranger Station | |
| Divided Highway | | Flash Hatcher | |
| Interstate Highway with Full Control of Access | | Community Hall | |
| State-Numbered Highway | | Correctional Institution | |
| Interstate-Numbered Highway | | Tourist Court or Motel | |
| US-Numbered Highway | | Monument-Small | |
| State-Numbered Highway | | Museum | |
| State-Numbered Highway Spur | | Firestation | |
| State-Numbered Highway Link | | Courthouse | |
| Highway Reference Post Number | | Army | |
| Interstate Exit Number | | Post Office | |
| Wide Stream | | Highway Maintenance Yard | |
| Narrow Stream | | Dump Area | |
| Irrigation Canal | | Sewage Disposal Plant | |
| Reservoir, Pond or Lake | | Water Supply Stand Pipe | |
| Reservoir, With Dam | | Weight Station or Port of Entry | |
| Highway Bridge-Any Type | | Commercial or Municipal Airport | |
| Small Bridges-Closely Spaced | | Airport with Paved Runways | |
| Large Bridges-Not Closely Spaced | | State Boundary | |
| General Bridge | | County Boundary | |
| Arch Bridge | | Township Line | |
| Truss Bridge | | Section Line | |
| Pedestrian Underpass | | Corporate Limit Lines | |
| Railroad Overpass | | Parks and Other Reservations | |
| Railroad Underpass | | Boundary Limits of Area Shown in Enlargements (see enlargements for details) | |
| Railroad | | State Capital | |
| Dam with Road on Top | | County Seat | |
| Cattle Guard | | Other Cities and Villages | |
| Dwelling | | Incorporated City or Village | |
| Row of Dwellings | | Triangulation Station | |
| Cemetery | | Points Between which Distances are Measured (indicated thus) | |
| Church or Other Religious Institution | | Latitude and Longitude | |
| Church with Cemetery Adjacent | | | |
| Hospital | | | |
| Business | | | |
| Industrial Plant | | | |



LAMBERT CONFORMAL CONIC PROJECTION
8265 NORTH AMERICAN DATUM
NEBRASKA COORDINATE SYSTEM



KEY TO COUNTIES
NDOR makes no warranties, guarantees, or representations for accuracy of this information and assumes no liability for errors or omissions. Please notify the Department of any errors or omissions identified in this data.