

2024 DISTRICT 4 Surface Transportation Meeting

Wes Wahlgren

District 4 Engineer

NEBRASKA

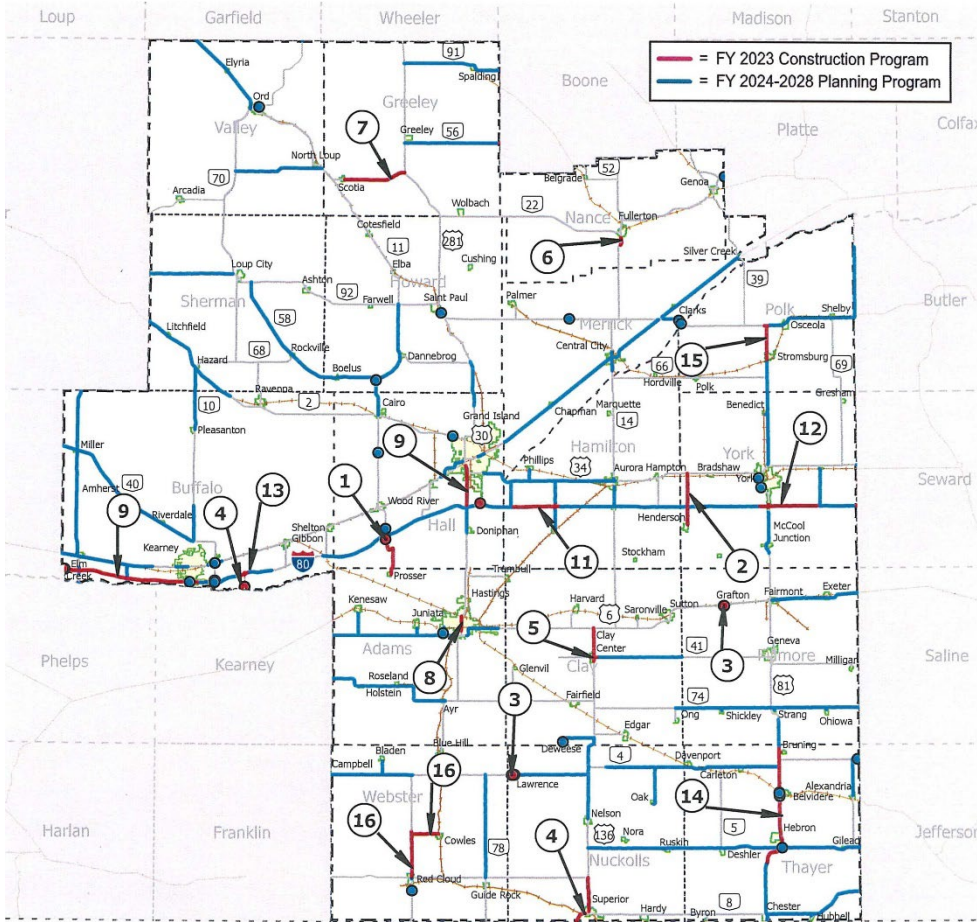
Good Life. Great Journey.

DEPARTMENT OF TRANSPORTATION

James Kindig

District 4 Highway
Commissioner

District 4 Overview



- 17 counties in South Central Nebraska
- Population of 214,918
- 9,751 Square Miles
- 1,709 centerline miles of highway
 - Contains 110 miles of Interstate 80 and 138 miles of Expressway
- 623 bridge length structures



BUCKLE UP

PHONE DOWN

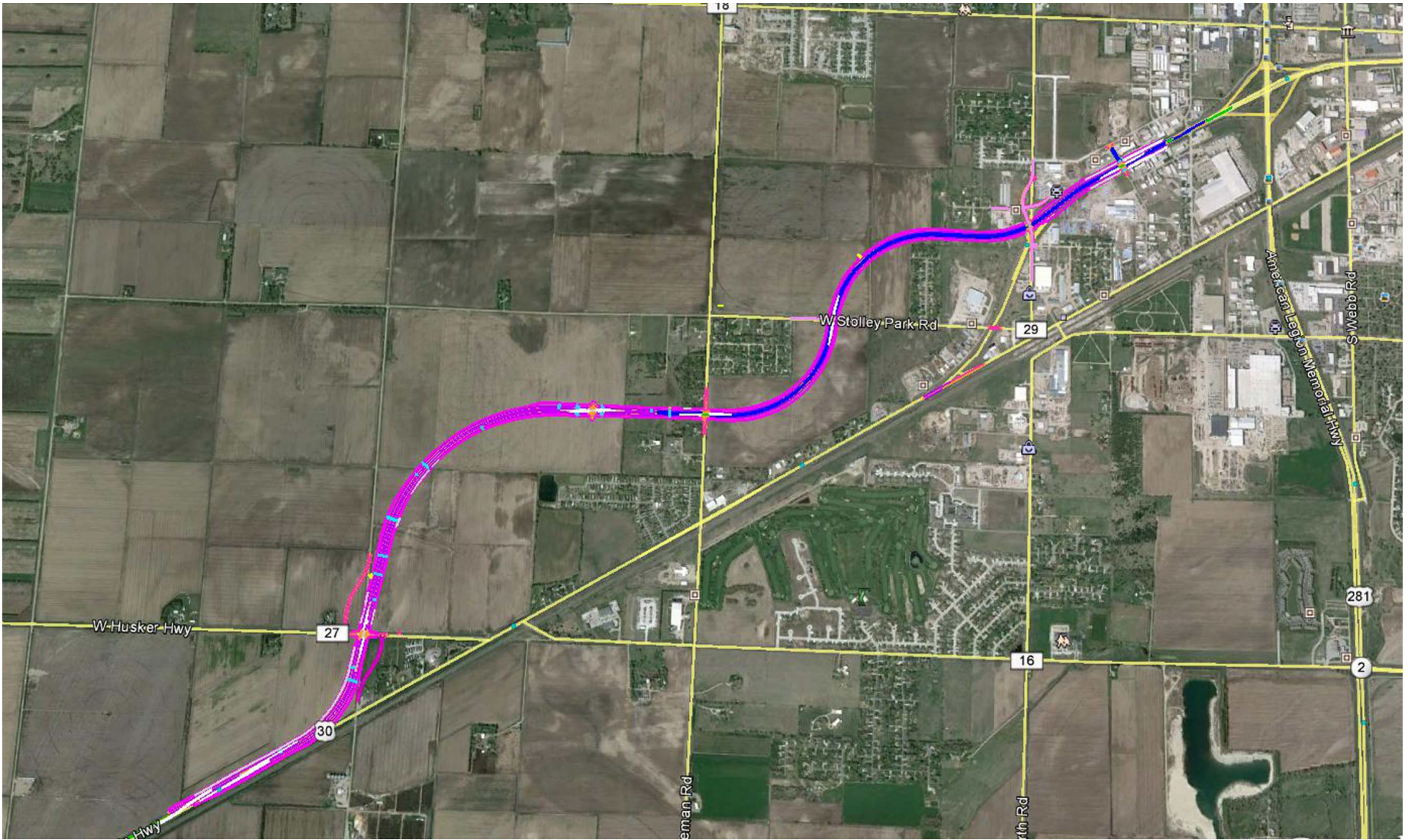
Build Nebraska Act Projects NDOT District 4

US-6, Hastings SE

- From east end of the current 5 lane section on J Street to Showboat Road
- Project Length = 2.4 Mile
- Estimated Cost = \$33.2m

US-30, US-281 West

- From west end of the current 4 lane section west of US-281 in Grand Island to just west of Monitor Road
- Project Length = Approx. 3.9 Mile
- Contract Cost = Approx. \$33.6m



US-81, York - Columbus

- From north end of the York Bypass 4 lane to the 4 lane south of Columbus.
- Project Length = 41 Mile
- Estimated Cost = \$400-450m

PROJECT PROFILE:
US 81 from York north



QUICK FACTS

Category: Design

Project: US 81 from York north,
4-lane divided expressway

Estimated project cost: \$214M

Length of project: 43 miles

Planning Process

- Each District is allocated a budget based on its 20-year needs and the amount of funding available
- The District Engineer selects the projects
- Some of the tools used to select projects are:
 - Pavement Management System
 - Nebraska Serviceability index (NSI)
 - International Roughness Index (IRI)
 - Bridge Management System
 - Traffic Counts
 - Accident Reports
 - Public Input

Current Program Book

- District 4 Improvement Map (Page 19)
 - FY 2025 Projects are shown in **RED** (Page 20) contains 18 projects with an average estimated cost of \$4.2m and totaling \$75,022m.
 - FY 2026 – 2030 Projects are shown in **BLUE** (Pages 21-24) contains 89 projects with an average estimated cost of \$6.6m and totaling \$591m. These numbers do not include the Capital Improvement Projects discussed earlier.

Selected FY2025 Projects

See Page 20 of the Program Book

NEBRASKA

Good Life. Great Journey.

DEPARTMENT OF TRANSPORTATION

S-1C, Hastings Reg Center Spur Bridge

- Bridge
- Project Length = 0 Miles Br.
- Estimated Cost = \$1.9m
- ADT = 955







N-2, Hazard East

- Mill, Resurface, Bridge
- Project Length = 6.2 Miles
- Estimated Cost = \$7.3m
- ADT = 1,529





US-6, Grafton Area

- Resurface
- Project Length = 6.2 Miles
- Estimated Cost = \$2.3m
- ADT = 1,688



US-6, In Fairmont and East

- Mill, Resurface, Bridge
- Proj. Length = 11.9 Miles
- Estimated Cost = \$10.2m
- ADT = 1,928



N-11, S JCT. N-58 to N-92

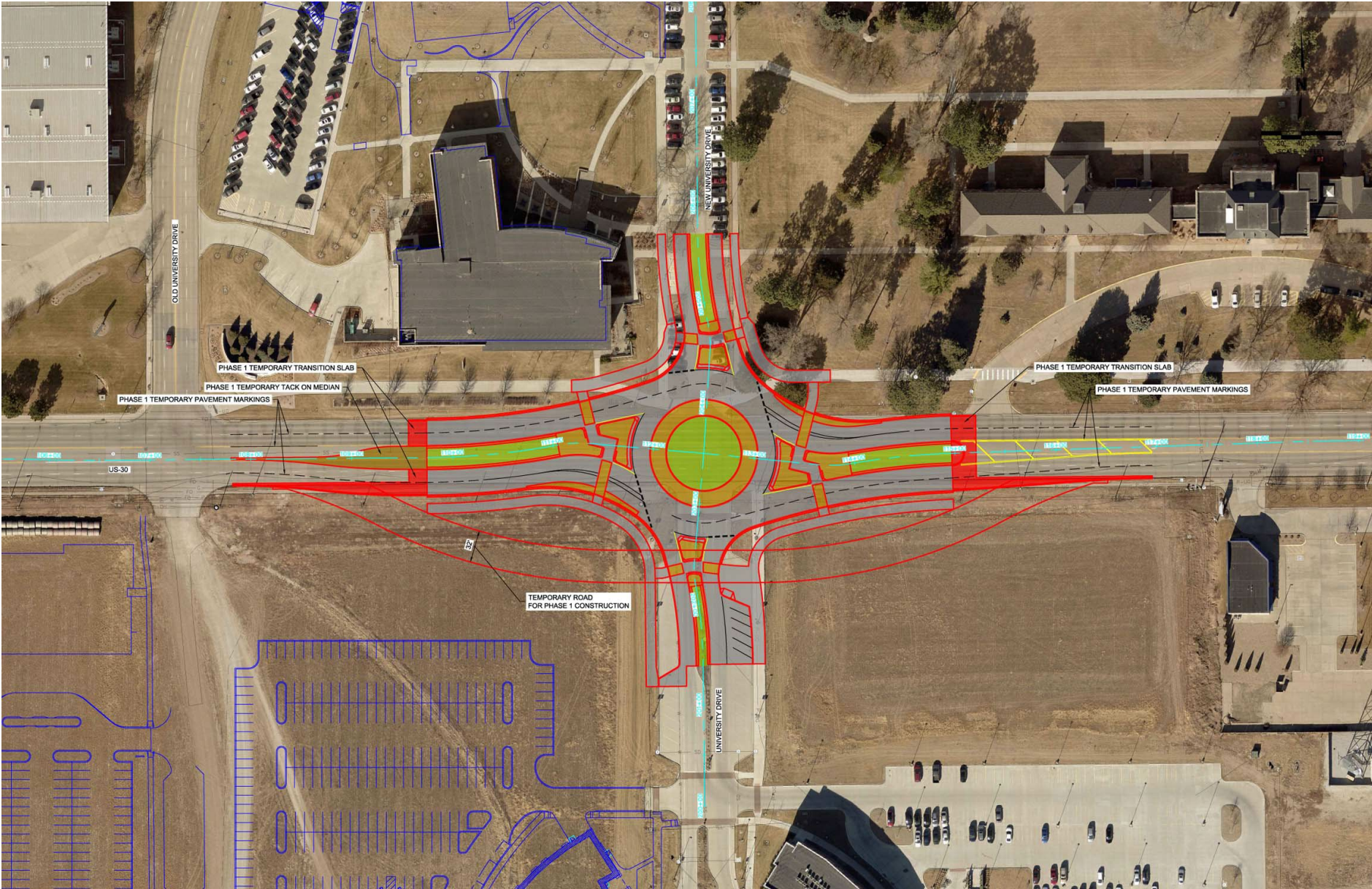
- Mill, Resurface, Bridge
- Project Length = 12 Miles
- Estimated Cost = \$6.8m
- ADT = 1,027



US-30, US30/ University Dr

- Intersection
- Project Length = 0 Miles
- Estimated Cost = \$1.6m
- ADT = 11,310





US-30, Kearney East

- Lighting
- Project Length = 1.9 Miles
- Estimated Cost = \$0.7m
- ADT = 9,422



N-39, Genoa Area

- Resurface
- Proj. Length = 21.2 Miles
- Estimated Cost = \$5.9m
- ADT = 1,339



N-41, Clay Center East

- Mill, Resurface
- Proj. Length = 11.6 Miles
- Estimated Cost = \$5.3m
- ADT = 563



N-74, Ong Spur to US-81*

- Mill, Resurface, Bridge
- Proj. Length = 13.3 Miles
- Estimated Cost = \$9.0m
- ADT = 905

* Includes the Shickley Spur



N-74, Strang Spur East*

- Mill, Resurface
- Project Length = 11.7 Miles
- Estimated Cost = \$7.4m
- ADT = 571

* Includes the Strang and Ohioa Spurs



I-80, Hampton to York

- Cable Median Barrier
- Project Length = 15 Miles
- Estimated Cost = \$10.3m
- ADT = 26,080



US-81, Stromsburg North*

- Resurface
- Project Length = 4.1 Miles
- Estimated Cost = \$4.7m
- ADT = 3,565

*Carry Over Project





Selected FY2026 Projects

See Pages 21 - 24 of the Program Book

NEBRASKA

Good Life. Great Journey.

DEPARTMENT OF TRANSPORTATION

N-4, Davenport East

- Mill, Resurface, Bridge
- Project Length = 13 Miles
- Estimated Cost = \$5.8m
- ADT = 777



US-30, Chapman West

- Mill, Resurface
- Project Length = 8 Miles
- Estimated Cost = \$5.9m
- ADT = 6,545



US-30, Central City East

- Mill, Resurface
- Project Length = 8.2 Miles
- Estimated Cost = \$4.3m
- ADT = 4,068



I-80, Odessa to Kearney EB

- 4 Lane, Gr, Struct, Conc Pave
- Project Length = 9.3 Miles
- Estimated Cost = \$37.6m
- ADT = 21,032



I-80, Giltner to Hampton

- Cable Median Barrier
- Project Length = 14 Miles
- Estimated Cost = \$9.9m
- ADT = 25,752



US-183, Elm Creek to Miller

- Mill, Resurface, Bridge
- Project Length = 14.4 Miles
- Estimated Cost = \$18.3m
- ADT = 795



Wahlgren, Wes

From: Rung, Cindy
Sent: Wednesday, September 11, 2024 12:24 PM
To: Reiners, Friday; Repass, Margaret; Scott, Kerry; Vosburg, Kurt; Ballard, Sandra; Klein, Eric; Merchant, Ben; Wahlgren, Wes; Zeman, Deanna; Swedberg, Karen; Thayer, Gary; Willard, Ashleigh; Allen, Erin; Kovar, Mark; Schmitz, Pam
Cc: Rung, Cindy; Wick, Rhea
Subject: JNB Heavy Haul 2963088 - 26'7 wide traveling with NSP Escort from KS to SD 9/23-10/2

Good Afternoon:

THIS WILL BE AN NSP ESCORTED LOAD:

Please verify that the following is acceptable for travel from KS to SD 09/23-10/2:

Load (Cargo) Description

Actual Dimensions

Width	Height	Overall Length	Trailer & Load Length	Gross Weight
26' 7"	15' 6"	120' 0"	112' 0"	172000

D7: START ON KS LINE & US-183 NB, US-136 NB, US-183 NB D4

D4: US-183 NB D6

D6: US-183 NB, NE-2 NWB, US-83 NB D8

D8: US-83 NB, US-20 NWB, US-83 NB END @ SD LINE

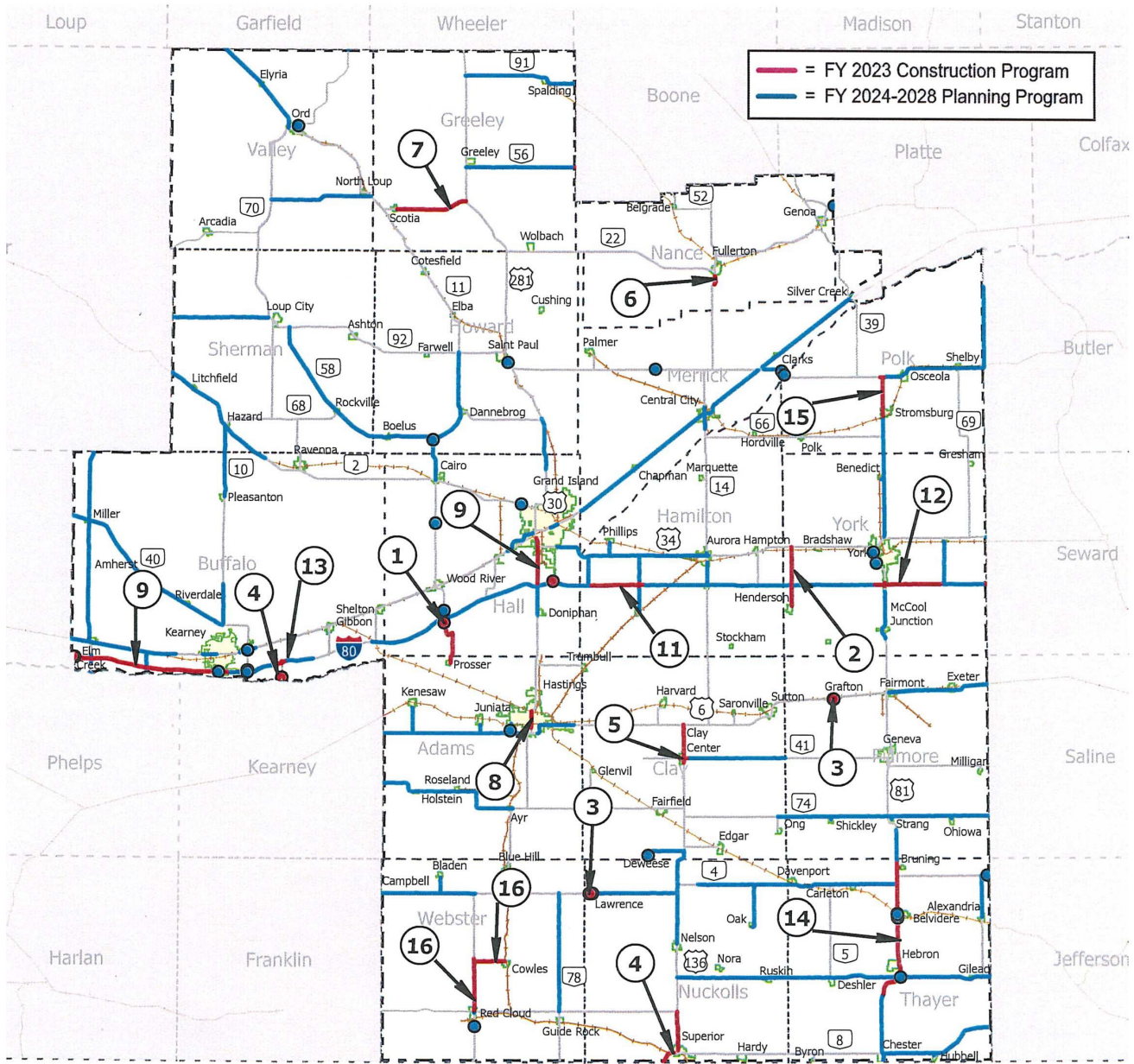
Thanks for your help.



US-281, In Red Cloud

- Urban
- Project Length = 1.3 Miles
- Estimated Cost = \$6.8m
- ADT = 2,016





Thank you

We will now open the meeting up to receive your comments and input.

NEBRASKA

Good Life. Great Journey.

DEPARTMENT OF TRANSPORTATION