

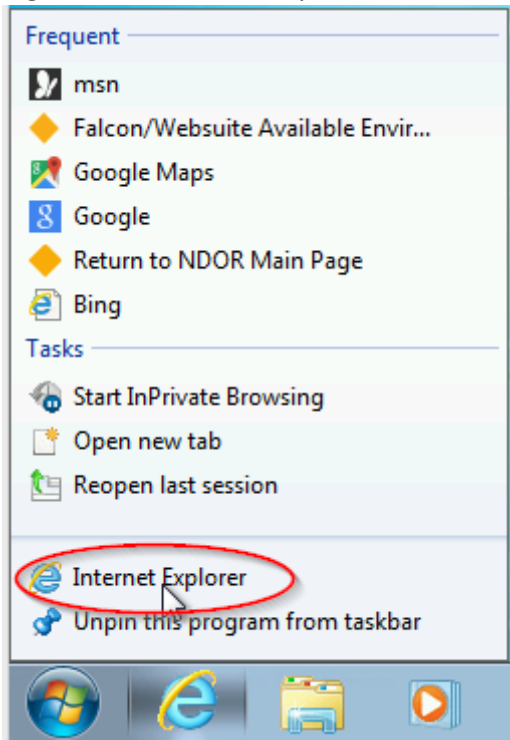
How to Install the slactvx.cab add-on from Bentley Systems

This add-on needs to be installed while running Internet Explorer (IE) as an administrator. The following instructions will walk you through the steps to get the add-on installed

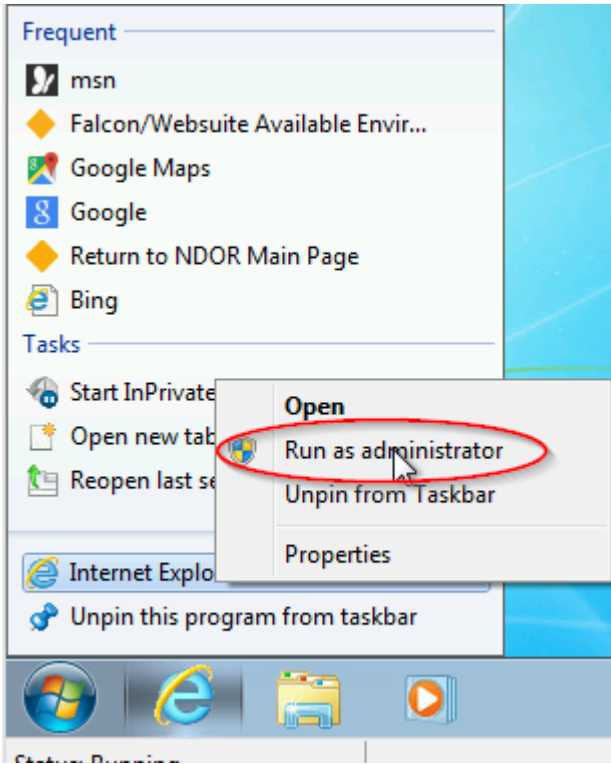
1. Right click on IE from the pinned shortcut on your taskbar



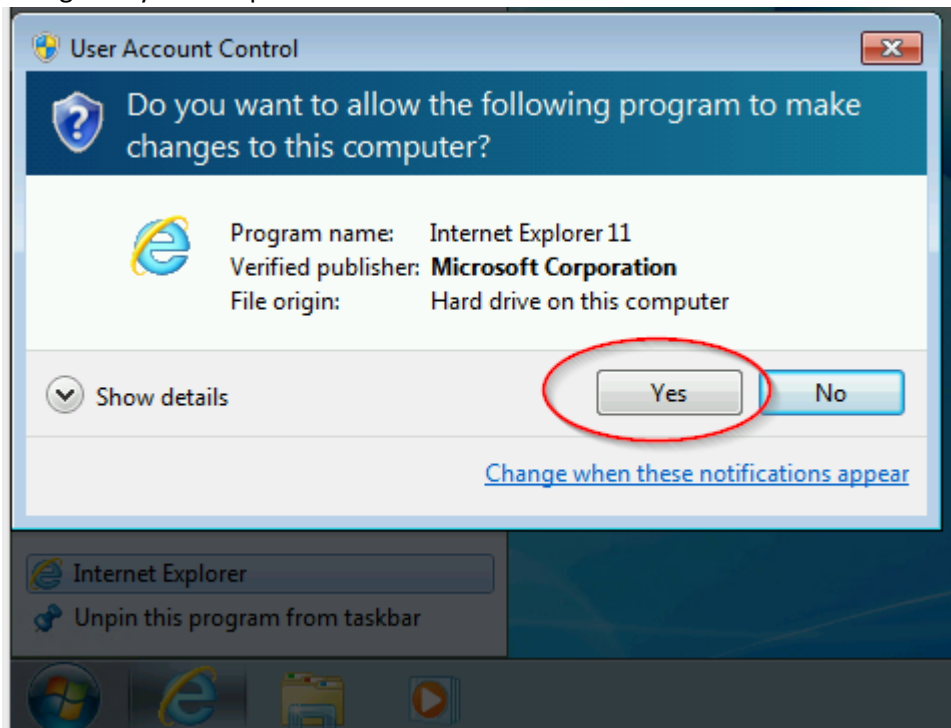
2. Right click on Internet Explorer in the menu the popped up



3. Left click on Run as Administrator in the next pop up menu



4. Depending on your User Account Control settings, you may need to click Yes to allow the program to make changes to your computer



5. Navigate to the NDOR Permit website, logon and apply for permit as normal

6. IE will prompt to install the add-on, click Install

https://dortruckpermits.nebraska.gov/permit/permits/permittrip

Application Routing

NDOR Nebraska Department of Roads
Automated Truck Permit System

Powered By
SUPERLOAD

Application My Vehicles My Permits My Reports My Password Contact Us Logout **Help OnMap On**

Type: Single Trip-OS/OW Request: N/A Permit: N/A For: (DO NOT USE) CINDY FOR LIVE SITE Login: CINDY24

Step 6 Trip Selection - Vehicle : Len=LEGAL, Wid=LEGAL, Ht=12' 0", Trlr Len=LEGAL, GVW=60000; Route Info: Orig=seward, Dest=... [New Routing Features Info!](#) ?

- To select the trip for your application, select the routing method in 1. below. Then click the description of each step to perform the action (each step is a hyperlink).
- Your application cannot be submitted for the approval process until you have selected a trip and analyzed it.
- To move around the map, use the zoom control (top left of the map) to zoom in/out, fit the map, and pan. Or use the mouse scroll wheel to zoom and the left button to drag the map.
You cannot continue with the permit application approval process until you select a trip that has been successfully analyzed. If you are having problems selecting a trip, you can submit your permit application to the permit office for review.
- For routing assistance select the "Help" button located in the lower left corner, or submit your application to the permit office for review by selecting the option located on the left.

1. Select method of routing
Text Description

2. Enter your trip description

3. Analyze the trip

Analysis Status:
Not Analyzed

Trip Usage
 Use selected trip to request permit
 Request office review
(for failing trips or questions.)

Optional
Save trip for future use
Delete a saved trip
Clear the current trip
Display Limitations

Find / Locate Item **Display Temporary Restrictions** **Map Options** **Clear Highlighted Items**

Map control is not installed

Depending on how your browser is setup, you may need to click on the Information Bar (located below the URL textbox) in the browser or you may be prompted with a security dialog box to download and install the map control
If you cancelled the download and installation of the map control please click on the Back button on the web page and submit the application again.
Select [Here](#) to view the complete list of system requirements for this site.

This website wants to install the following add-on: 'slactvx.cab' from 'Bentley Systems, Incorporated'. [What's the risk?](#) **Install**

7. A new window will pop up asking "Are you sure you want to leave this page?" click Leave this page.

The screenshot shows a web browser window with the URL <https://dortruckpermits.nebraska.gov/permit/permits/permittrip>. The page header includes the NDOR logo (Nebraska Department of Roads) and the text "Automated Truck Permit System" and "Powered By SUPERLOAD". The navigation bar contains links for "Application", "My Vehicles", "My Permits", "My Reports", "My Password", "Contact Us", "Logout", and "Help OnMap On". Below the navigation bar, there is a status bar with "Type: Single Trip-OS/OW", "Request: N/A", "Permit: N/A", "For: (DO NOT USE) CINDY FOR LIVE SITE", and "Login: CINDY24".

The main content area is titled "Step 6 Trip Selection - Vehicle : Len=LEGAL". It contains a list of instructions for selecting a trip, a "Find / Locate" search bar, and a "Map control is not installed" warning. The warning text reads: "Depending on how your browser is setup, you may need to click on the Information Bar (located below the URL textbox) in the browser or you may be prompted with a security dialog box to download and install the map control. If you cancelled the download and installation of the map control please click on the Back button on the web page and submit the application again. Select Here to view the complete list of system requirements for this site." Below the warning is a yellow information bar that says "This website wants to install the following add-on: 'slactvx.cab' from 'Bentley Systems, Incorporated'. What's the risk? Install".

A "Windows Internet Explorer" dialog box is overlaid on the page, asking "Are you sure you want to leave this page?". The dialog box contains the message: "Message from webpage: If you leave this page any changes you have made to the application may not be saved, and will not be available for further review." There are two buttons: "Leave this page" (highlighted with a red oval) and "Stay on this page".

8. A new window will pop up, click Retry

https://dortruckpermits.nebraska.gov/permit/permits/permittrip

NDOR Nebraska Department of Roads
Automated Truck Permit System

Powered By SUPERLOAD

Application My Vehicles My Permits My Reports My Password Contact Us Logout Help OnMap On

Type: Single Trip-OS/IOW Request: N/A Permit: N/A For: (DO NOT USE) CINDY FOR LIVE SITE Login: CINDY24

Step 6 Trip Selection - Vehicle : Len=LEGAL, Wid=LEGAL, Ht=12' 0", Trlr Len=LEGAL, GVW=60000; Route Info: Orig=seward, Dest=... [New Routing Features Info!](#)

- To select the trip for your application, select the routing method in 1. below. Then click the description of each step to perform the action (each step is a hyperlink).
- Your application cannot be submitted for the approval process until you have selected a trip and analyzed it.
- To move around the map, use the zoom control buttons. You cannot continue with the permit application until you have selected a trip, you can submit your permit application for review. For routing assistance select the "Help" button located on the left.

- Select method of routing
Text Description
- Enter your trip description
- Analyze the trip

Analysis Status:
Not Analyzed

Trip Usage
 Use selected trip to request permit
 Request office review (for failing trips or questions.)

Optional
Save trip for future use
Delete a saved trip
Clear the current trip
Display Limitations

Advanced Options
Add additional trip

Find / Load
Clear Highlighted Items

Windows Internet Explorer

To display the webpage again, the web browser needs to resend the information you've previously submitted.

If you were making a purchase, you should click Cancel to avoid a duplicate transaction. Otherwise, click Retry to display the webpage again.

Retry Cancel

This website wants to install the following add-on: 'slactvx.cab' from 'Bentley Systems, Incorporated'. [What's the risk?](#) Install

9. Click Install on the next pop window

https://dortruckpermits.nebraska.gov/permit/permits/permittrip

Waiting for dortruckpermit...

NDOR Nebraska Department of Roads
Automated Truck Permit System

Powered By **SUPERLOAD**

Application My Vehicles My Permits My Reports My Password Contact Us Logout Help OnMap On

Type: Single Trip-OS/OW Request: N/A Permit: N/A For: (DO NOT USE) CINDY FOR LIVE SITE Login: CINDY24

Step 6 Trip Selection

Vehicle : Len=LEGAL, Wid=LEGAL, Ht=12' 0", Trlr Len=LEGAL, GW=60000; Route Info: Orig=seward, Dest=... [New Routing Features Info!](#)

- To select the trip for your application, select hyperlink).
- Your application cannot be submitted for the
- To move around the map, use the zoom control button to drag the map. You cannot continue with the permit application selecting a trip, you can submit your permit application.
- For routing assistance select the "Help" button located on the left.

- Select method of routing
Text Description
- Enter your trip description
- Analyze the trip

Analysis Status:
Not Analyzed

Trip Usage

Use selected trip to request permit

Request office review
(for failing trips or questions.)

Optional

Save trip for future use
Delete a saved trip
Clear the current trip
Display Limitations

Advanced Options

Add additional trip

Internet Explorer - Security Warning

Do you want to install this software?

Name: slactvx.cab
Publisher: Bentley Systems, Incorporated

More options

Install Don't Install

While files from the Internet can be useful, this file type can potentially harm your computer. Only install software from publishers you trust. [What's the risk?](#)

Once that has installed you will be able to see the map.



Step 6 Trip Selection - Vehicle : Len=LEGAL, Wid=LEGAL, Ht=12' 0", Trlr Len=LEGAL, GW=60000; Route Info: Orig=seward, Dest=... [New Routing Features Info](#) ?

- To select the trip for your application, select the routing method in 1. below. Then click the description of each step to perform the action (each step is a hyperlink).
- Your application cannot be submitted for the approval process until you have selected a trip and analyzed it.
- To move around the map, use the zoom control (top left of the map) to zoom in/out, fit the map, and pan. Or use the mouse scroll wheel to zoom and the left button to drag the map.
You cannot continue with the permit application approval process until you select a trip that has been successfully analyzed. If you are having problems selecting a trip, you can submit your permit application to the permit office for review.
- For routing assistance select the "Help" button located in the lower left corner, or submit your application to the permit office for review by selecting the option located on the left.

1. Select method of routing
Text Description ▾

2. Enter your trip description

3. Analyze the trip

Analysis Status:
Not Analyzed

4. Trip Usage
 Use selected trip to request permit
 Request office review
(for failing trips or questions.)

Optional
Save trip for future use
Delete a saved trip
Clear the current trip
Display Limitations

Advanced Options
 Instant Analysis

Map interface with controls: Find / Locate Item, Display Temporary Restrictions, Map Options, Clear Highlighted Items