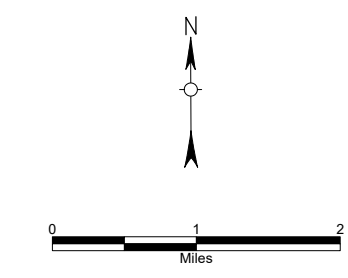
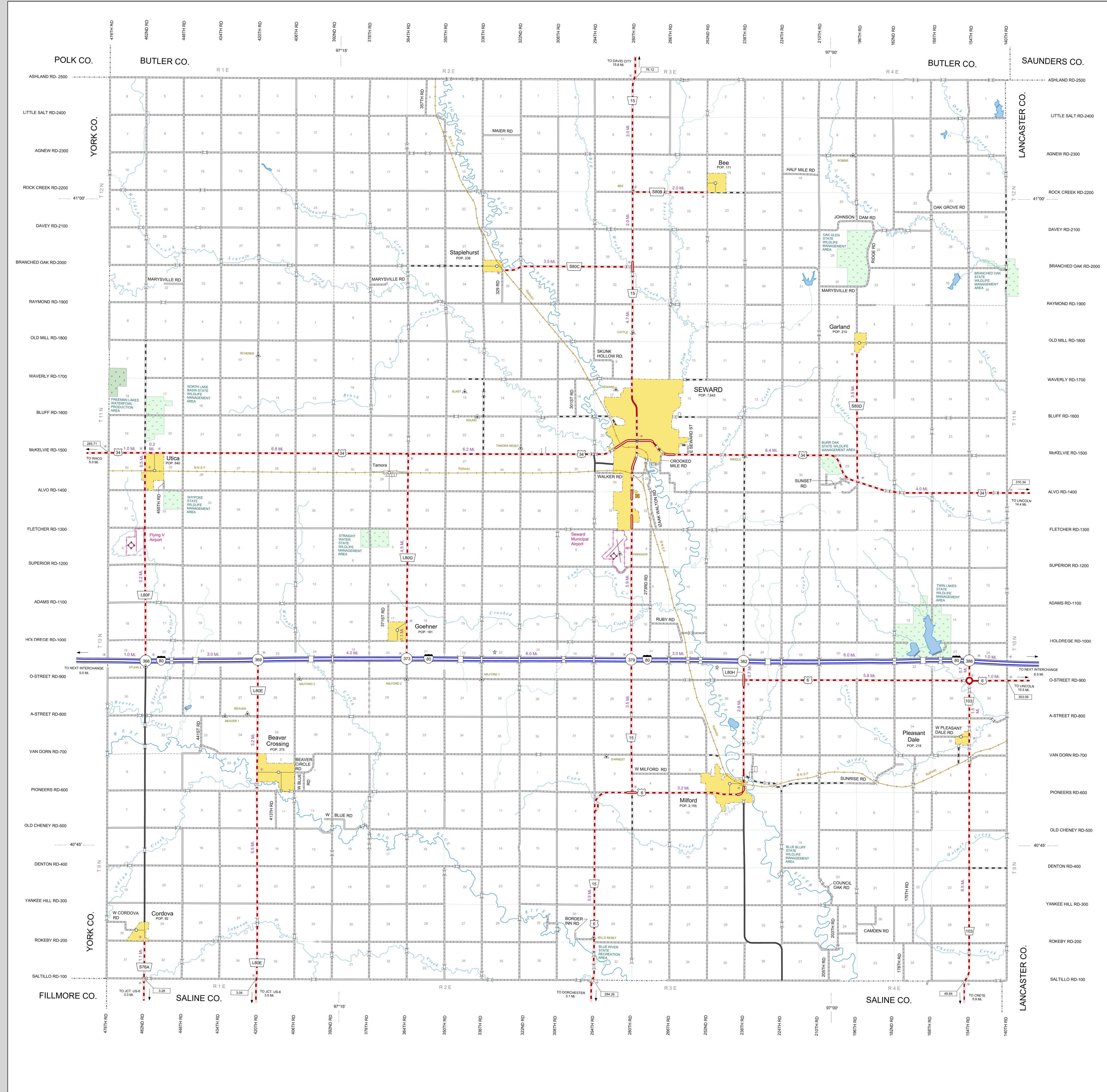
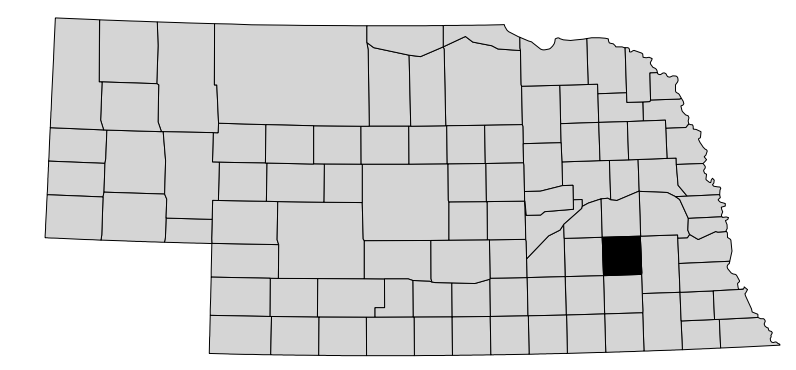


GENERAL HIGHWAY MAP SEWARD COUNTY NEBRASKA 2022



- STATE HIGHWAYS**
 - Interstate Highway with Full Control of Access
 - Divided Highway
 - Multiple Lane Undivided Highway
 - Concrete / Brick Surface
 - Asphalt / Bituminous Surface
 - Gravel or Crushed Rock
 - Unimproved Road
 - Primitive Road
 - Streets to City Center
- LOCAL ROADS**
 - Concrete / Brick Surface
 - Asphalt / Bituminous Surface
 - Gravel or Crushed Rock
 - Unimproved Road
 - Primitive Road
 - Streets to City Center
- ROADWAY IDENTIFIERS**
 - ADAMS ROAD 911 Named / Numbered Streets
 - Interstate Numbered Route
 - U.S. Numbered Route
 - State Numbered Route
 - State Numbered Spur
 - State Numbered Link
 - Highway Reference Post Number
 - Interstate Exit Number
- STRUCTURAL FEATURES**
 - Highway Bridge
 - Pedestrian Underpass
 - Pedestrian Overpass
 - Cattle Guard
 - Railroad
 - Railroad Underpass
 - Railroad Overpass
- CULTURAL FEATURES**
 - State Capital
 - County Seat
 - Other Cities and Villages
 - Courthouse
 - Highway Maintenance Yard
 - Weight Station
 - Rest Area
 - Commercial or Municipal Airport
- AREA FEATURES**
 - Indian Reservation Areas
 - National Areas
 - State Game and Parks Areas
 - Incorporated City or Village
 - Inset Map Boundary
- BOUNDARIES**
 - State Boundary
 - County Boundary
 - Township Line
 - Section Line
 - Airport Boundary
- MEASUREMENT SYSTEMS**
 - 100' 15" Latitude and Longitude
 - 141' 45" Transgeation Station
 - 0.66076 Distance Between Points
- WATER FEATURES**
 - Wide River
 - River
 - Named Creek
 - Unnamed Creek
 - Irrigation Ditch or Canal
 - Reservoir, Pond, or Lake



NEBRASKA
Good Life. Great Journey.
DEPARTMENT OF TRANSPORTATION

This map is to be used for information only and is not intended to show ownership or to be definitive on which roads are public under Nebraska Law. The Nebraska Department of Transportation makes no warranties, guarantees or representations for the accuracy of this information and assumes no liability for errors or omissions. Any inconsistencies should be reported to NDOT.

CORPORATE LIMITS AS OF 2020 - STATE HIGHWAYS CORRECTED TO 2021

Prepared by: The Nebraska Department of Transportation, In Cooperation with the U.S. Department of Transportation and Federal Highway Administration.

SEWARD COUNTY 90