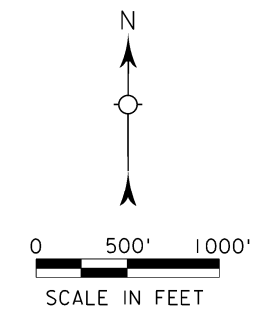
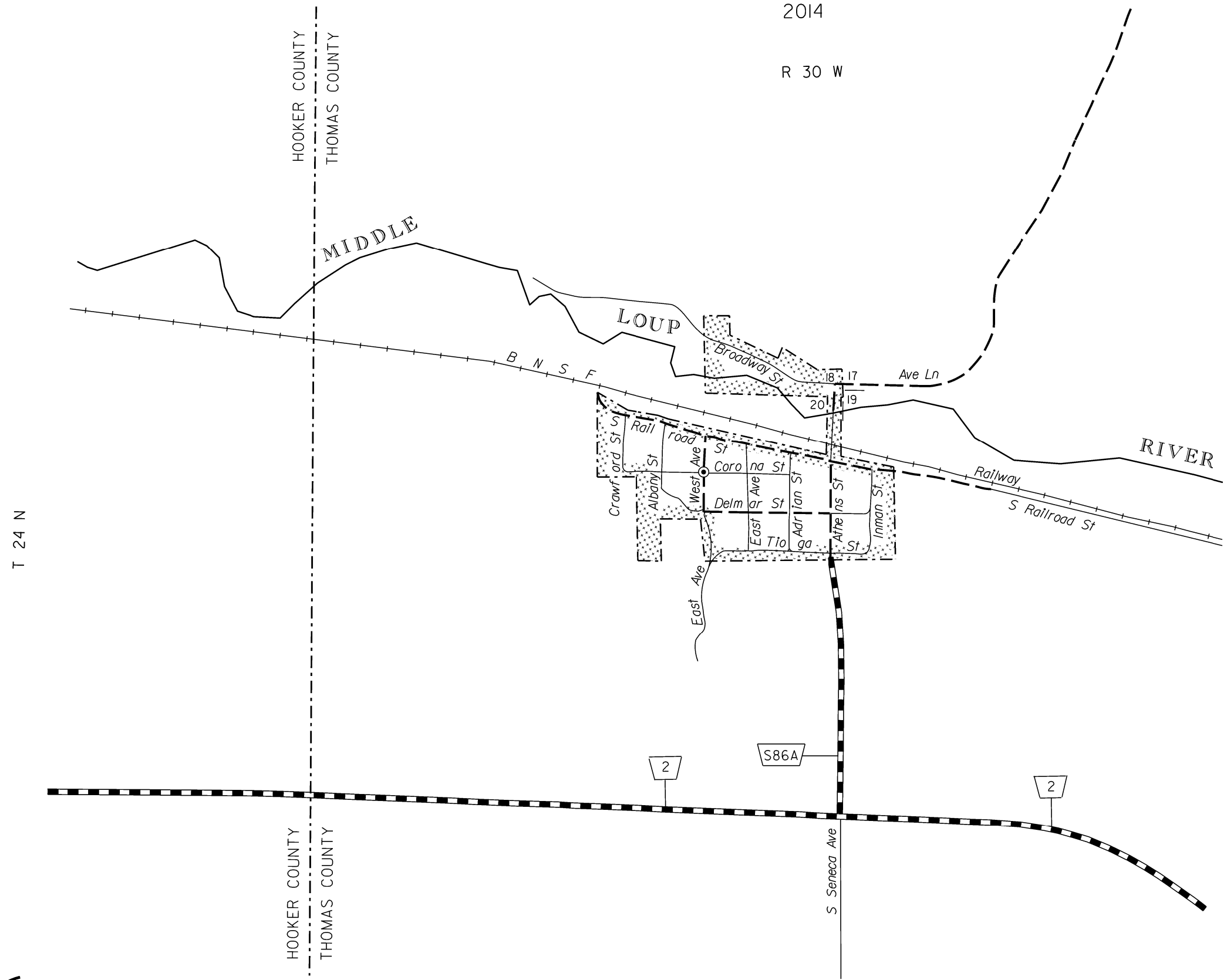


SENECA

THOMAS COUNTY
NEBRASKA

POPULATION 33 (2010 CENSUS)
2014

R 30 W



17 | 16
20 | 21

- STATE HIGHWAYS**
- Gravel or Crushed Rock
 - Asphalt/Bituminous Surface
 - Multiple Lane Undivided Highway Asphalt/Bituminous Surface
 - Concrete/Brick Surface
 - Multiple Lane Undivided Highway Concrete/Brick Surface
- CITY STREETS AND COUNTY ROADS**
- Primitive or Unimproved
 - Gravel or Crushed Rock
 - Asphalt/Bituminous Surface
 - Concrete/Brick Surface
 - Interstate Numbered Routes
 - U.S. Numbered Routes
 - State Numbered Routes
 - State Numbered Spurs
 - State Numbered Links
 - Main St* Street/Road Names
 - City Center
 - Corporate Limits



This map is to be used for information only and is not intended to show ownership or to be definitive on which roads are public under Nebraska Law. The Nebraska Department of Roads makes no warranties, guarantees or representations for the accuracy of this information and assumes no liability for errors or omissions. Any inconsistencies should be reported to NDOR.

CORPORATE LIMITS AS OF 2014
STATE HIGHWAYS CORRECTED TO 2012