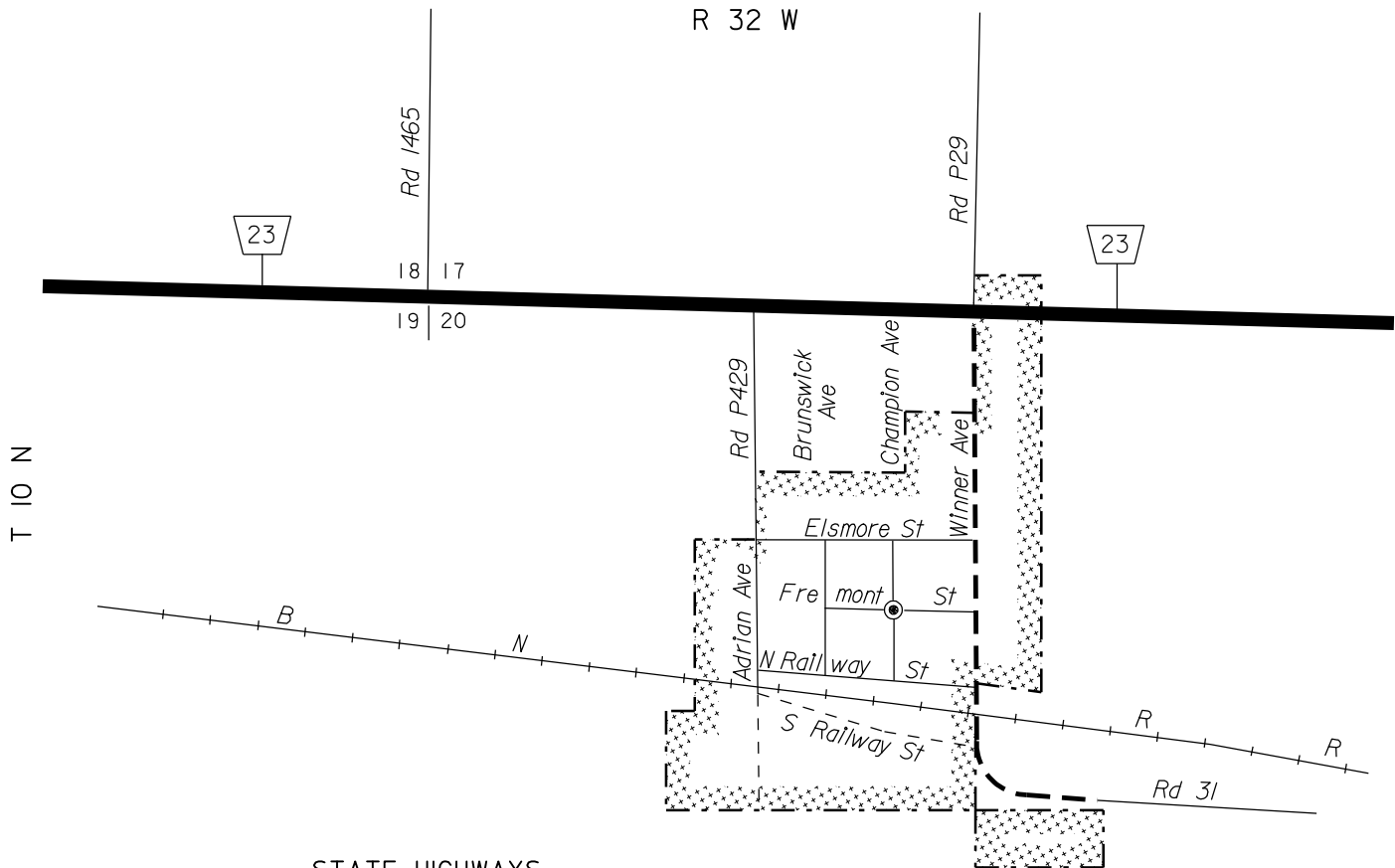


**DICKENS**  
 LINCOLN COUNTY  
 NEBRASKA  
 POPULATION 16 (1990 CENSUS)  
 1988

R 32 W



**STATE HIGHWAYS**

- Gravel or Crushed Rock
- Asphalt/Bituminous Surface
- Concrete/Brick Surface

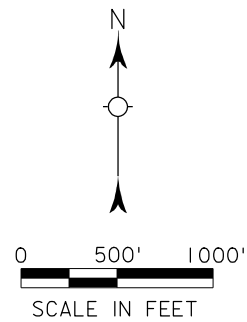
**CITY STREETS AND COUNTY ROADS**

- Primitive or Unimproved
- Gravel or Crushed Rock
- Asphalt/Bituminous Surface
- Concrete/Brick Surface

- Interstate Numbered Routes
- U.S. Numbered Routes
- State Numbered Routes
- State Numbered Spurs
- State Numbered Links

- AA St Unnamed Routes
- In 116 Inventoried Numbered Routes
- RD 767 UNNAMED/Numbered Routes

- City Center
- Corporate Limits



CORPORATE LIMITS AS OF 2000  
 STATE HIGHWAYS CORRECTED TO 2000

