

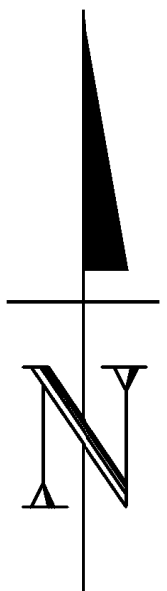
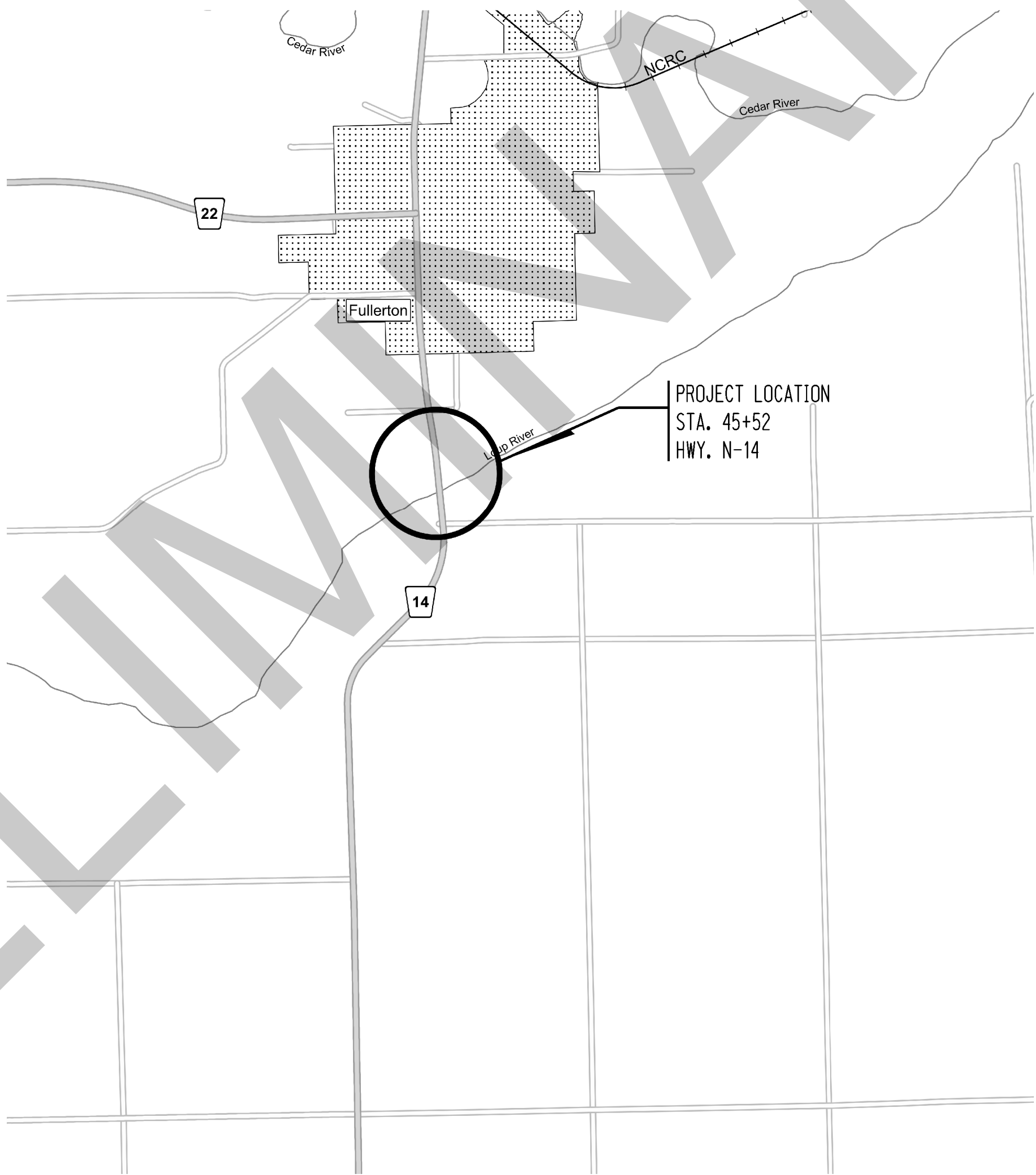
STATE OF NEBRASKA  
DEPARTMENT OF TRANSPORTATION  
PLANS FOR CONSTRUCTION  
FULLERTON WETLAND MITIGATION SITE  
NANCE COUNTY

|                 |           |
|-----------------|-----------|
| PROJECT NO.     | SHEET NO. |
| MISC-14-3(1016) | A1        |
| CONTROL NO.     | 42403B    |
| CONTROL NO.     |           |
| CONTROL NO.     |           |

THE 2017 EDITION OF THE NEBRASKA STANDARD SPECIFICATIONS AND THE SPECIAL PROVISIONS APPLY TO THIS PROJECT.

THE WORK ON THIS PROJECT CONSISTS OF GROUPS 1-GRADING, 3-CONCRETE PAVEMENT, 4-CULVERTS, 5-SEEDING, 6-BRIDGE, 7-GUARDRAIL, 8-MISCELLANEOUS, 9-BITUMINOUS & 10-GENERAL

|   |
|---|
| GROUPS 1, 3, 4, 5, 6, 7, 8, 9 & 10 ARE INCLUDED IN THE LETTING OF JUNE 20, 2024 |
| GROUPS ARE INCLUDED IN THE LETTING OF   |
| GROUPS ARE INCLUDED IN THE LETTING OF   |



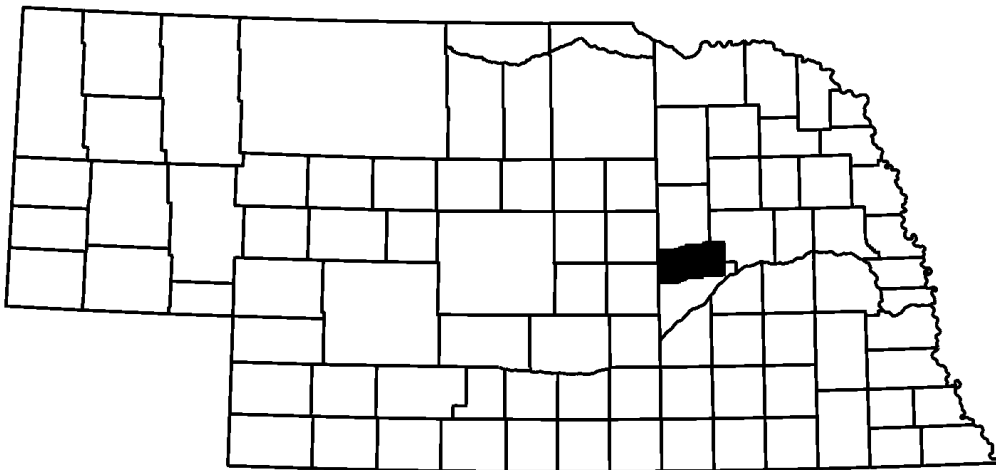
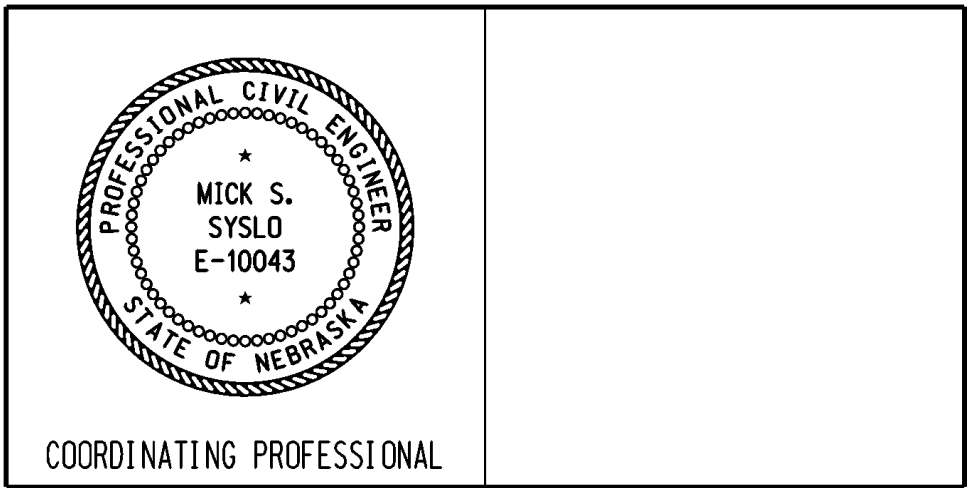
CONVENTIONAL SIGNS

|                      |           |
|----------------------|-----------|
| FENCE R.O.W. OR WIRE | — — — — — |
| GUARDRAIL            | — — — — — |
| TRAVELED WAY         | — — — — — |
| DIKE                 | — — — — — |
| CULVERT              | — — — — — |
| POWER POLE           | — — — — — |
| TELEPHONE POLE       | — — — — — |
| MAILBOX              | — — — — — |
| RAILROAD TRACKS      | — — — — — |
| MARSH                | — — — — — |
| TREE - CONIFEROUS    | — — — — — |
| TREE - DECIDUOUS     | — — — — — |

R.O.W. LEGEND

|                                 |           |
|---------------------------------|-----------|
| NEW CONTROLLED ACCESS           | — — — — — |
| PREVIOUS CONTROLLED ACCESS      | — — — — — |
| LIMITS OF CONSTRUCTION          | — — — — — |
| PREVIOUS R.O.W.                 | — — — — — |
| NEW R.O.W.                      | — — — — — |
| EXISTING PERMANENT EASEMENT     | — — — — — |
| TEMPORARY EASEMENT              | — — — — — |
| EXCESS TAKING                   | — — — — — |
| PERMANENT EASEMENT              | — — — — — |
| EXISTING RAILROAD EASEMENT      | — — — — — |
| NEW RAILROAD PERMANENT EASEMENT | — — — — — |
| NEW RAILROAD TEMPORARY EASEMENT | — — — — — |

REFERENCE POST NO. TO REFERENCE POST NO.  
EXCEPTIONS: FROM STA. TO STA.  
TOTAL NET LENGTH OF PROJECT: FEET MILES



|             |           |
|-------------|-----------|
| PROJECT NO. | SHEET NO. |
| 14-3(1016)  | A2        |

C.N.42403B

# INDEX OF SHEETS

SHEET NO.

|         |                                       |
|---------|---------------------------------------|
| A1      | TITLE PAGE                            |
| A2      | INDEX OF SHEETS                       |
| C1 - C2 | SUMMARY OF QUANTITIES                 |
| E1 - E2 | EXISTING CONDITION                    |
| E3 - E4 | GRADING PLAN                          |
| F1      | HORIZONTAL ALIGNMENT & ORIENTATION    |
| G1      | GENERAL INFORMATION                   |
| J1 - J2 | EROSION & SEDIMENT CONTROL            |
| J3 - J4 | FENCING                               |
| P1 - P2 | LANDSCAPING                           |
| U1 - U4 | SPECIAL PLAN 1C SILT CHECKS ALL TYPES |

STANDARD PLANS

|        |                                      |
|--------|--------------------------------------|
| 501-R7 | (3 SHEETS) EROSION CONTROL           |
| 502-R2 | (2 SHEETS) SILT FENCE DETAILS        |
| 503    | CONCRETE WASHOUT & CONSTRUCTION EXIT |
| 715-R1 | 5-STRAND WIRE FENCE                  |

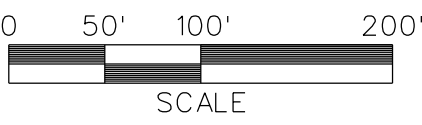
| PROJECT NO. | SHEET NO. |
|-------------|-----------|
| 14-3(1016)  | C1        |
| C.N. 42403B |           |

PRELIMINARY

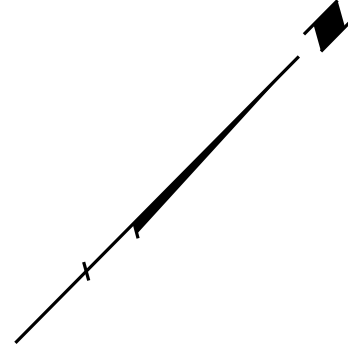
| PROJECT NO. | SHEET NO. |
|-------------|-----------|
| 14-3(1016)  | C2        |
| C.N. 42403B |           |

PRELIMINARY





| PROJECT NO. | SHEET NO. |
|-------------|-----------|
| 14-3(1016)  | E1        |
| C.N. 42403B |           |



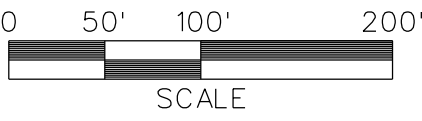
| BORING LOCATION |          |             |
|-----------------|----------|-------------|
| NORTHING        | EASTING  | DESCRIPTION |
| 2197230.6       | 555074.4 | PZ-3        |

**LEGEND**

- EXISTING CONTOUR
- - - EXISTING WETLANDS

EXISTING CONDITIONS





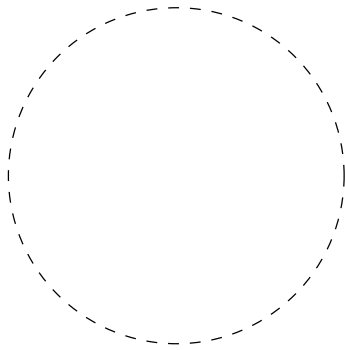
| PROJECT NO. | SHEET NO. |
|-------------|-----------|
| 14-3(1016)  | E2        |
| C.N. 424038 |           |



| BORING LOCATION |          |             |
|-----------------|----------|-------------|
| NORTHING        | EASTING  | DESCRIPTION |
| 2197568.9       | 556940.2 | PZ-1        |
| 2197129.3       | 555918.6 | PZ-2        |
| 2197230.6       | 555074.4 | PZ-3        |

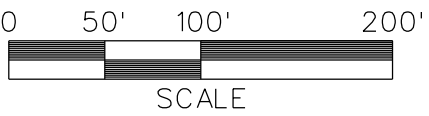
LEGEND

- EXISTING CONTOUR
- - - EXISTING WETLANDS

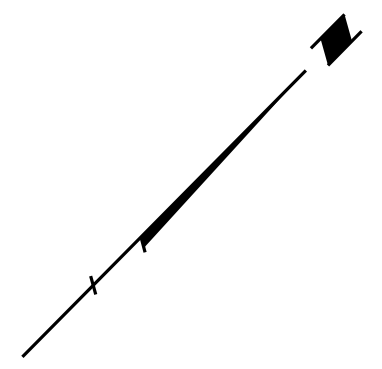


EXISTING CONDITIONS





|             |           |
|-------------|-----------|
| PROJECT NO. | SHEET NO. |
| 14-3(1016)  | E3        |
| C.N. 424038 |           |

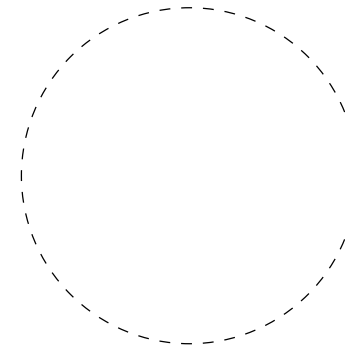


| BUILD EARTH DRIVE |          |       |         |
|-------------------|----------|-------|---------|
| STATION           | SIDE     | WIDTH | % SLOPE |
| 40+73             | 200', RT | 20'   | 2.0     |

| GRADING POINTS |           |            |             |
|----------------|-----------|------------|-------------|
| POINT TYPE     | NORTHING  | EASTING    | ELEV. (FT.) |
| 1              | 555357.01 | 2197126.10 | 1624.00     |
| 2              | 555151.59 | 2197493.13 | 1624.00     |
| 3              | 555097.59 | 2197409.86 | 1624.00     |
| 4              | 555193.84 | 2196870.27 | 1624.00     |
| 5              | 555337.06 | 2197023.04 | 1624.00     |
| 6              | 555135.93 | 2196767.96 | 1624.50     |
| 7              | 555171.89 | 2196729.43 | 1624.50     |
| 8              | 555304.74 | 2196822.52 | 1624.50     |
| 9              | 555406.73 | 2196920.20 | 1624.50     |
| 10             | 555453.72 | 2196874.88 | 1624.50     |
| 11             | 555485.38 | 2196897.80 | 1624.50     |
| 12             | 555502.36 | 2196955.33 | 1624.50     |
| 13             | 555449.21 | 2197048.18 | 1624.50     |

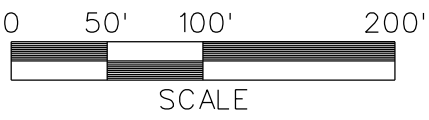
LEGEND

- EXISTING CONTOUR
- PROPOSED CONTOUR
- EXISTING WETLANDS

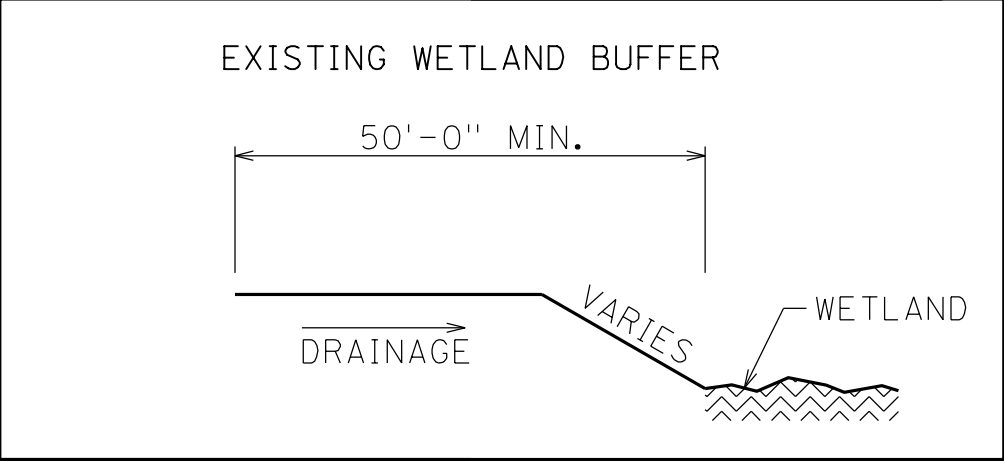
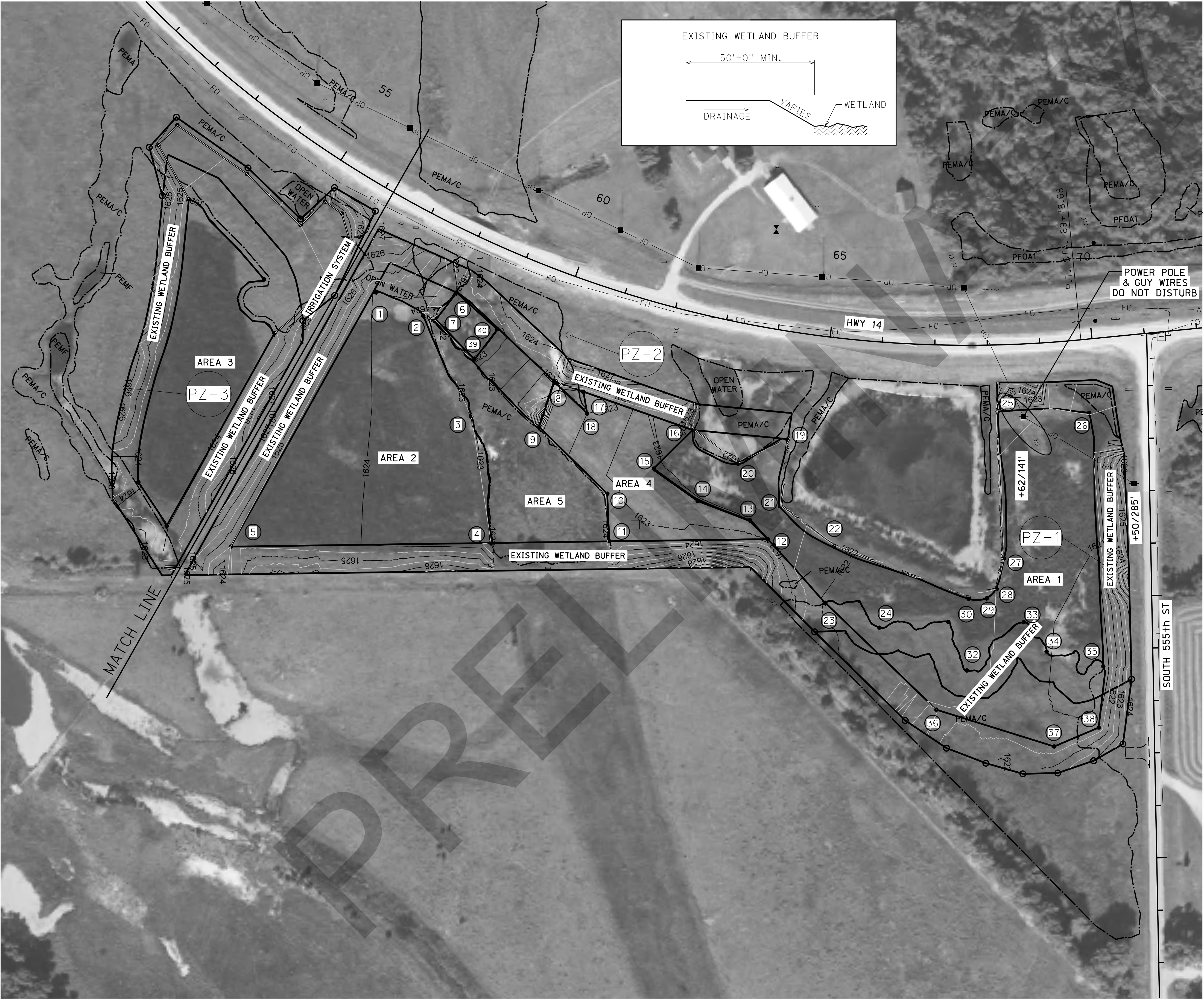


GRADING PLAN





|             |           |
|-------------|-----------|
| PROJECT NO. | SHEET NO. |
| 14-3(1016)  | E4        |
| C.N. 42403B |           |



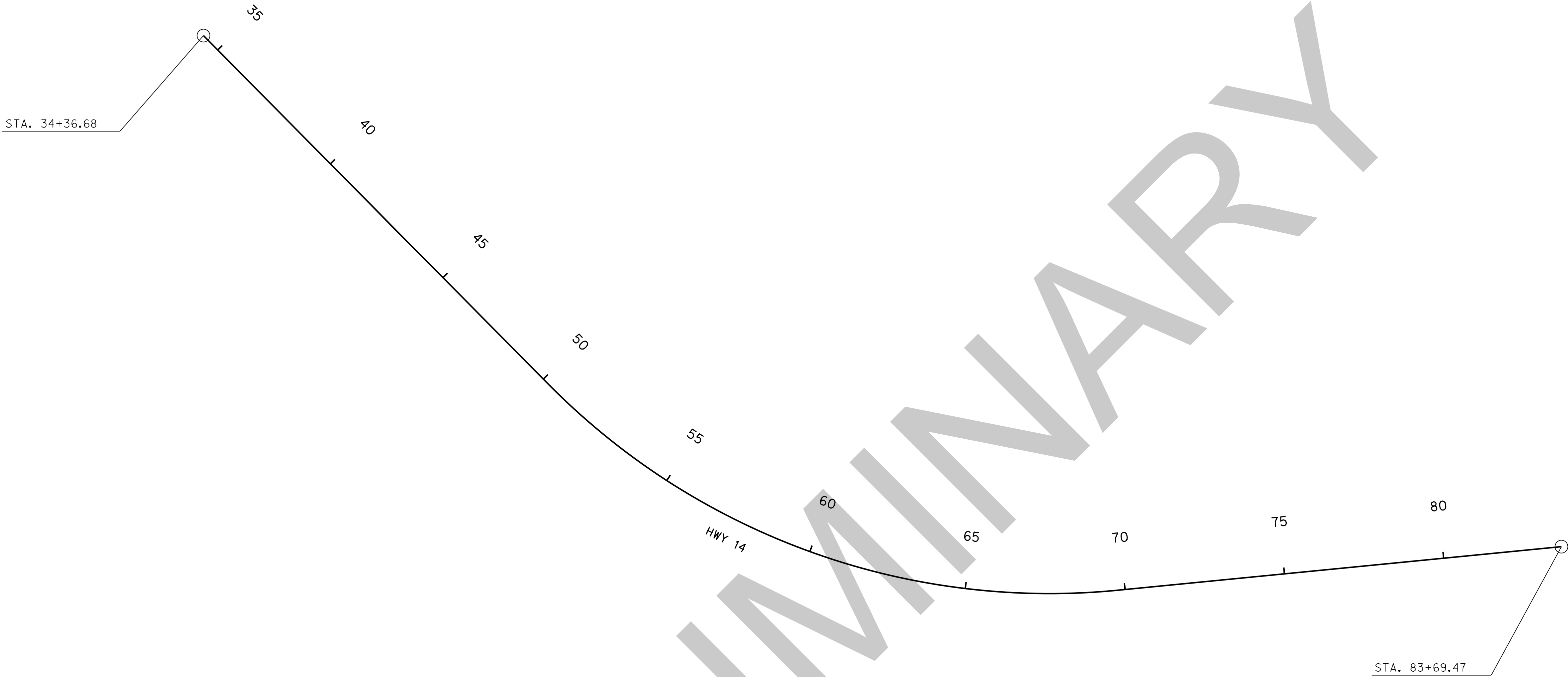
| BUILD EARTH DRIVE |         |       |         |
|-------------------|---------|-------|---------|
| STATION           | SIDE    | WIDTH | % SLOPE |
| 70+31             | 796' RT | 20'   | 4.0     |

| GRADING POINTS |           |            |             |
|----------------|-----------|------------|-------------|
| POINT TYPE     | NORTHING  | EASTING    | ELEV. (FT.) |
| 1              | 555550.71 | 2197047.41 | 1624.00     |
| 2              | 555640.65 | 2197092.40 | 1623.30     |
| 3              | 555732.62 | 2197286.14 | 1623.02     |
| 4              | 555769.75 | 2197525.88 | 1623.00     |
| 5              | 555273.79 | 2197532.77 | 1624.00     |
| 6              | 555703.98 | 2197048.22 | 1623.00     |
| 7              | 555662.25 | 2197103.35 | 1623.00     |
| 8              | 555890.02 | 2197217.86 | 1623.00     |
| 9              | 555860.44 | 2197304.55 | 1623.00     |
| 10             | 555991.46 | 2197431.94 | 1623.00     |
| 11             | 555995.16 | 2197522.57 | 1623.00     |
| 12             | 556297.28 | 2197518.54 | 1623.00     |
| 13             | 556263.21 | 2197482.05 | 1623.00     |
| 14             | 556163.62 | 2197445.82 | 1623.00     |
| 15             | 556080.59 | 2197383.99 | 1623.00     |
| 16             | 556154.20 | 2197310.54 | 1623.00     |
| 17             | 555945.70 | 2197237.98 | 1623.00     |
| 18             | 555952.96 | 2197279.10 | 1623.00     |
| 19             | 556335.74 | 2197327.87 | 1623.00     |
| 20             | 556240.55 | 2197374.99 | 1623.00     |
| 21             | 556320.31 | 2197455.52 | 1623.00     |
| 22             | 556423.00 | 2197532.36 | 1622.00     |
| 23             | 556406.90 | 2197639.93 | 1622.00     |
| 24             | 556509.95 | 2197687.37 | 1622.00     |
| 25             | 556735.34 | 2197275.28 | 1622.13     |
| 26             | 556909.45 | 2197277.83 | 1621.50     |
| 27             | 556747.39 | 2197555.52 | 1621.51     |
| 28             | 556733.18 | 2197613.26 | 1621.47     |
| 29             | 556714.40 | 2197631.37 | 1621.74     |
| 30             | 556679.95 | 2197632.35 | 1622.00     |
| 31             | 556641.26 | 2197676.37 | 1622.00     |
| 32             | 556676.69 | 2197768.83 | 1622.00     |
| 33             | 556785.02 | 2197676.85 | 1621.50     |
| 34             | 556828.52 | 2197732.96 | 1621.50     |
| 35             | 556936.67 | 2197761.05 | 1621.50     |
| 36             | 556618.28 | 2197843.68 | 1621.50     |
| 37             | 556842.97 | 2197913.84 | 1621.25     |
| 38             | 556927.73 | 2197877.88 | 1621.12     |
| 39             | 555738.25 | 2197175.90 | 1623.20     |
| 40             | 555781.75 | 2197118.72 | 1622.90     |

LEGEND

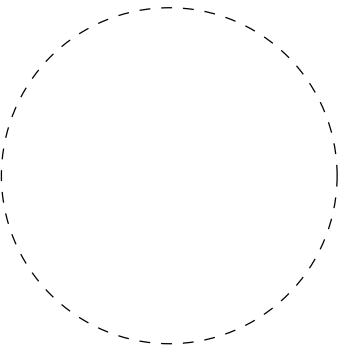
- EXISTING CONTOUR
- PROPOSED CONTOUR
- EXISTING WETLANDS

GRADING PLAN



HWY 14

|  |   |                    |      |                |                  |
|--|---|--------------------|------|----------------|------------------|
| Beginning chain N14 description                            |   |                    |      |                |                  |
| Point 14   | N | 554,036.6306       | E    | 2,195,407.3142 | Sta 34+36.68     |
| Course from 14 to 25 N 45° 17' 11.17" E Dist 1,363.32'     |   |                    |      |                |                  |
| Equation: Sta 48+00.00 (BK) = Sta 48+54.54 (AH)            |   |                    |      | End Region 1   |                  |
|  |   |                    |      | Begin Region 2 |                  |
| Point 25   | N | 554,995.8120       | E    | 2,196,376.1343 | Sta 48+54.54     |
| Point 15   | N | 554,995.8130       | E    | 2,196,376.1353 | Sta 48+54.54     |
| Course from 15 to PC N141 N 45° 17' 11.17" E Dist 169.84'  |   |                    |      |                |                  |
| Curve Data   |   |                    |      |                |                  |
| *-----*  |   |                    |      |                |                  |
| Curve N141   |   |                    |      |                |                  |
| P.I. Station   | = | 60+71.29           | N    | 555,851.8740   | E 2,197,240.7986 |
| Delta  | = | 50° 53' 48.41"     | (LT) |                |                  |
| Degree   | = | 2° 36' 15.67"      |      |                |                  |
| Tangent  | = | 1,046.91'          |      |                |                  |
| Length   | = | 1,954.30'          |      |                |                  |
| Radius   | = | 2,200.00'          |      |                |                  |
| External   | = | 236.40'            |      |                |                  |
| Long Chord   | = | 1,890.67'          |      |                |                  |
| Mid. Ord.  | = | 213.46'            |      |                |                  |
| P.C. Station   | = | 50+24.38           | N    | 555,115.3036   | E 2,196,496.8266 |
| P.T. Station   | = | 69+78.67           | N    | 556,893.7737   | E 2,197,138.4495 |
| C.C.   | = |                    | N    | 556,678.6960   | E 2,194,948.9881 |
| Back   | = | N 45° 17' 11.17" E |      |                |                  |
| Ahead  | = | N 5° 36' 37.24" W  |      |                |                  |
| Chord Bear   | = | N 19° 50' 16.96" E |      |                |                  |
| Course from PT N141 to 16 N 5° 36' 37.24" W Dist 1,390.79' |   |                    |      |                |                  |
| Point 16   | N | 558,277.9039       | E    | 2,197,002.4821 | Sta 83+69.47     |
| Ending chain N14 description                               |   |                    |      |                |                  |





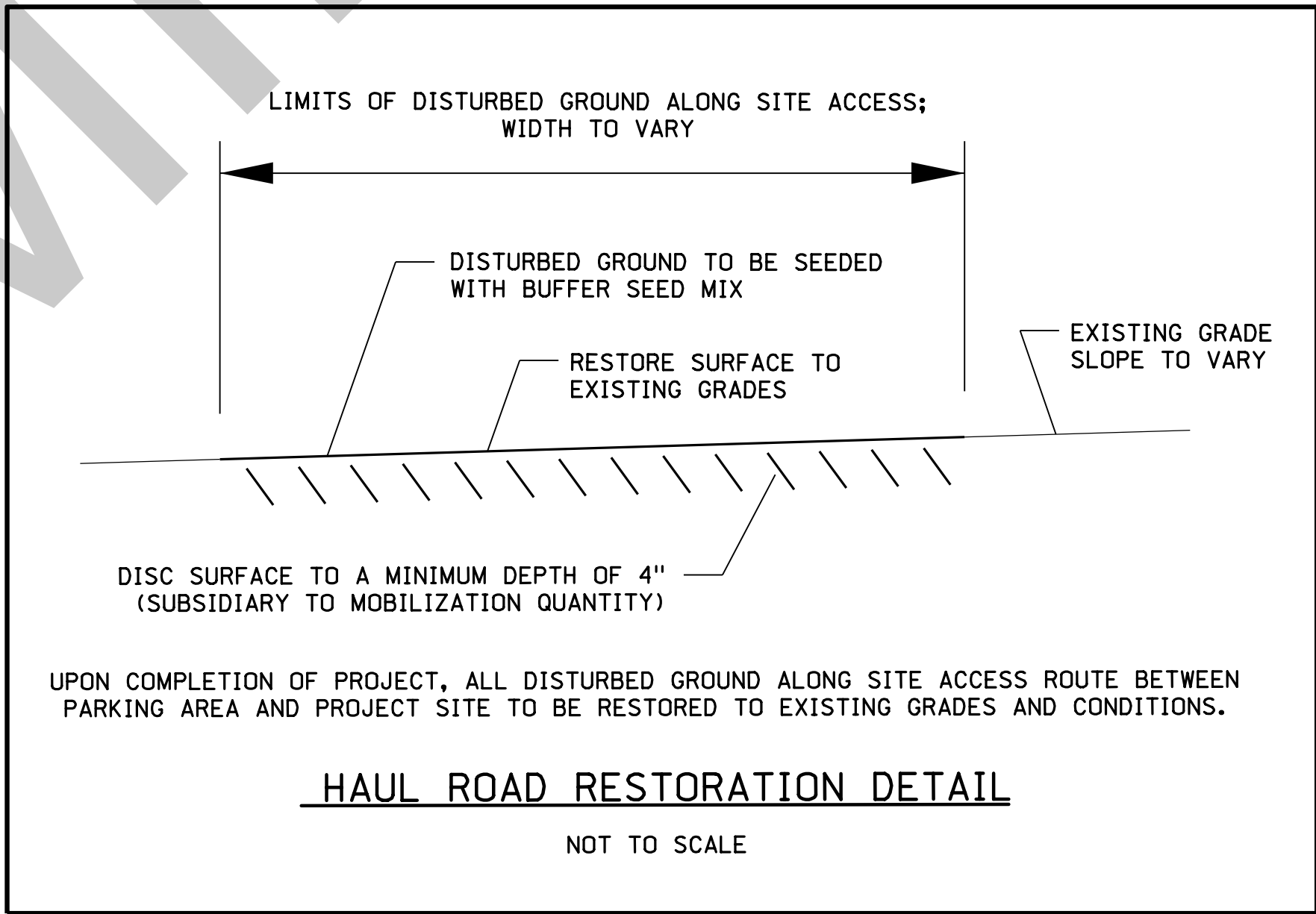
# GENERAL INFORMATION

| PROJECT NO. | SHEET NO. |
|-------------|-----------|
| 14-3(1016)  | G1        |
| C.N. 42403B |           |

## GENERAL NOTES

- THE LOCATIONS OF ALL AERIAL AND UNDERGROUND UTILITY FACILITIES MAY NOT BE INDICATED IN THESE PLANS. UNDERGROUND UTILITIES, WHETHER INDICATED OR NOT WILL BE LOCATED AND FLAGGED BY THE UTILITIES AT THE REQUEST OF THE CONTRACTOR.
- NO EXCAVATION WILL BE PERMITTED IN THE AREA OF UNDERGROUND UTILITY FACILITIES UNTIL ALL SUCH FACILITIES HAVE BEEN LOCATED AND IDENTIFIED TO THE SATISFACTION OF ALL PARTIES. THE EXCAVATION MUST BE ACCOMPLISHED WITH EXTREME CARE IN ORDER TO AVOID ANY POSSIBILITY OF DAMAGE TO THE UTILITY FACILITY.
- FIELD CONDITIONS CHANGE FREQUENTLY AT THE PROJECT SITE. SURVEY INFORMATION SHOWN MAY NOT MATCH CURRENT SITE CONDITIONS.
- THE CONTRACTOR SHALL LOCATE AND PROTECT EXISTING GROUND WATER WELLS AND PIEZOMETERS DURING CONSTRUCTION.
- THE CONTRACTOR SHALL RESTRICT ALL CONSTRUCTION OPERATIONS TO WITHIN THE LIMITS OF CONSTRUCTION AS ILLUSTRATED ON THE PLANS.
- THE CONTRACTOR SHALL ACCESS THE PROJECT ONLY AT CONSTRUCTION EXITS AS DESIGNATED ON THE PLANS OR AT THE DISCRETION OF THE ENGINEER. CONTRACTORS SHALL BE REQUIRED TO ADD 24" CULVERT PIPE TYPE 2,3,4,5,6,7 OR 8 UNDER EACH CONSTRUCTION EXIT TO MAINTAIN DITCH DRAINAGE. STABILIZED CONSTRUCTION EXITS SHALL BE LEFT IN PLACE UPON PROJECT COMPLETION. ALL LARGE DIAMETER ROCK SHALL BE REMOVED DOWN TO SOIL SURFACE AND 2" CRUSHED ROCK SHALL BE INCORPORATED IN 4" OF SOIL WITH 1" GRAVEL ADDED TO SURFACE. THE ADDITIONAL EFFORT SHALL BE INCLUDED IN THE PAYMENT FOR THE CONSTRUCTION EXIT.
- ANY MATERIALS OR WORK REQUIRED TO CONSTRUCT ACCESS ROUTE FOR EQUIPMENT HAULING SHALL BE CONSIDERED SUBSIDIARY TO THOSE ITEMS FOR WHICH DIRECT PAYMENT IS MADE. ACCESS ROUTES SHALL BE RESTORED ACCORDING TO THE HAUL ROAD RESTORATION DETAIL. WORK ASSOCIATED FOR RESTORATION SHALL BE SUBSIDIARY TO THOSE ITEMS FOR WHICH DIRECT PAYMENT IS MADE.
- THE CONTRACTOR SHALL FURNISH AND MAINTAIN ALL NECESSARY BARRICADES, WARNING SIGNS, LIGHTS AND FLAGGERS PER THE MUTCD AND NDOT BARRICADING STANDARDS. THE CONTRACTOR SHALL INSPECT AND VERIFY ALL APPROPRIATE BARRICADES AND SIGNS ARE PLACED ACCORDINGLY AND UPRIGHT AT THE END OF EACH CONSTRUCTION DAY, OR AS DIRECTED BY THE ENGINEER.
- THE CONTRACTOR SHALL COMPLY WITH THE CLEAN WATER ACT TO ENSURE COMPLIANCE WITH THE TERMS AND CONDITIONS OF THE STORM WATER POLLUTION PREVENTION PLAN (SWPPP) DEVELOPED UNDER THE NPDES PERMIT AND THE TERMS OF THE NPDES PERMIT.
- THE CONTRACTOR SHALL COORDINATE CONSTRUCTION ACTIVITIES IN A MANNER THAT WILL PROVIDE PROTECTION OF EXISTING WETLANDS, TREES AND SENSITIVE AREAS NOTED IN THE PLANS. EXISTING WETLANDS AND SENSITIVE AREAS SHALL BE PROTECTED BY SURROUNDING WITH SILT FENCE AS DIRECTED BY THE ENGINEER. EQUIPMENT CROSSING THROUGH WETLAND AREAS WILL NOT BE ALLOWED.
- THE CONTRACTOR SHALL SUBMIT A DEWATERING PLAN FOR ACCOMPLISHING THE REQUIRED WORK TO THE ENGINEER FOR APPROVAL. SEPARATE DIRECT PAYMENT WILL NOT BE MADE FOR DEWATERING ACTIVITIES AND THIS WORK SHALL BE CONSIDERED SUBSIDIARY TO THOSE ITEMS FOR WHICH PAYMENT IS MADE.
- THE CONTRACTOR SHALL DISPOSE OF ALL UNSUITABLE MATERIALS ENCOUNTERED IN THE REMOVAL AND GRADING OPERATIONS OFF THE PROJECT SITE, INCLUDING SAND, CONCRETE, ASPHALT, OIL MAT, BRICK, ROCK, ETC. NO UNSUITABLE MATERIAL, AS DEFINED BY THE ENGINEER, SHALL BE USED FOR BACKFILLING OF EMBANKMENT CONSTRUCTION. THE COST FOR DISPOSAL OF UNSUITABLE MATERIAL SHALL BE SUBSIDIARY TO THE EXCAVATION.
- THE CONTRACTOR SHALL REMOVE ALL STRUCTURES ENCOUNTERED TO AT LEAST 2 FEET BELOW FINISHED GROUND ELEVATION.
- WATER, AS REQUIRED FOR DUST CONTROL, SHALL BE CONSIDERED INCIDENTAL TO CONSTRUCTION AND NO MEASUREMENT OR PAYMENT SHALL BE MADE. CONSTRUCTION AREAS SHALL BE WATERED WITH EQUIPMENT FOR DUST POLLUTION ABATEMENT AS DIRECTED BY THE ENGINEER. THE CONTRACTOR SHALL BE RESPONSIBLE FOR LOCATING AND SUPPLYING WATER AS REQUIRED.
- UPON COMPLETION OF THE PROJECT, THE CONTRACTOR SHALL RESTORE ALL DISTURBED GROUND ALONG SITE ACCESS ROUTE TO EXISTING GRADE BY DISKING SURFACE TO A MINIMUM DEPTH OF 4 INCHES. DISKED GROUND SHALL BE SEEDED WITH APPROPRIATE SEED MIX.
- THE GEOTECHNICAL REPORT IS AVAILABLE BY REQUEST FROM THE NDOT.
- GRADING POINTS PROVIDED ARE TO FINAL GRADE. OVEREXCAVATION SHALL BE REQUIRED FOR PLACEMENT OF 6" SALVAGED TOPSOIL LAYER.
- CONTRACTOR SHALL NOT CROSS IRRIGATION SYSTEM OR ASSOCIATED FENCING WITH CONSTRUCTION EQUIPMENT WITHOUT WRITTEN APPROVAL FROM THE OWNER AND THE THE ENGINEER.
- CONTRACTOR SHALL IDENTIFY LOCATION AND CLEARLY MARK PIEZOMETER LOCATIONS (3 TOTAL) TO BE AVOIDED DURING GRADING OPERATIONS. PIEZOMETERS WILL REMAIN IN PLACE.

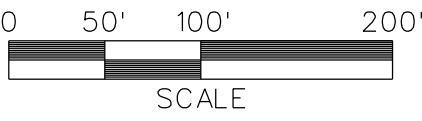
| EARTHWORK  |  |                       |                |                               |
|------------|--|-----------------------|----------------|-------------------------------|
| LOCATION   | EXCAVATION ESTABLISHED QUANTITY (CU. YDS.) | EMBANKMENT (CU. YDS.) | BALANCE FACTOR | (+) LONG (-) SHORT (CU. YDS.) |
| AREA 1 & 4 | 14828                                      | 6016                  | 1.4            | (+)6406                       |
| AREA 2     | 3285                                       | 1413                  | 1.4            | (+)1307                       |
| AREA 3     | 1513                                       | 3752                  | 1.4            | (-)3740                       |
| TOTAL      | 19626                                      |                       |                | (+)3973                       |



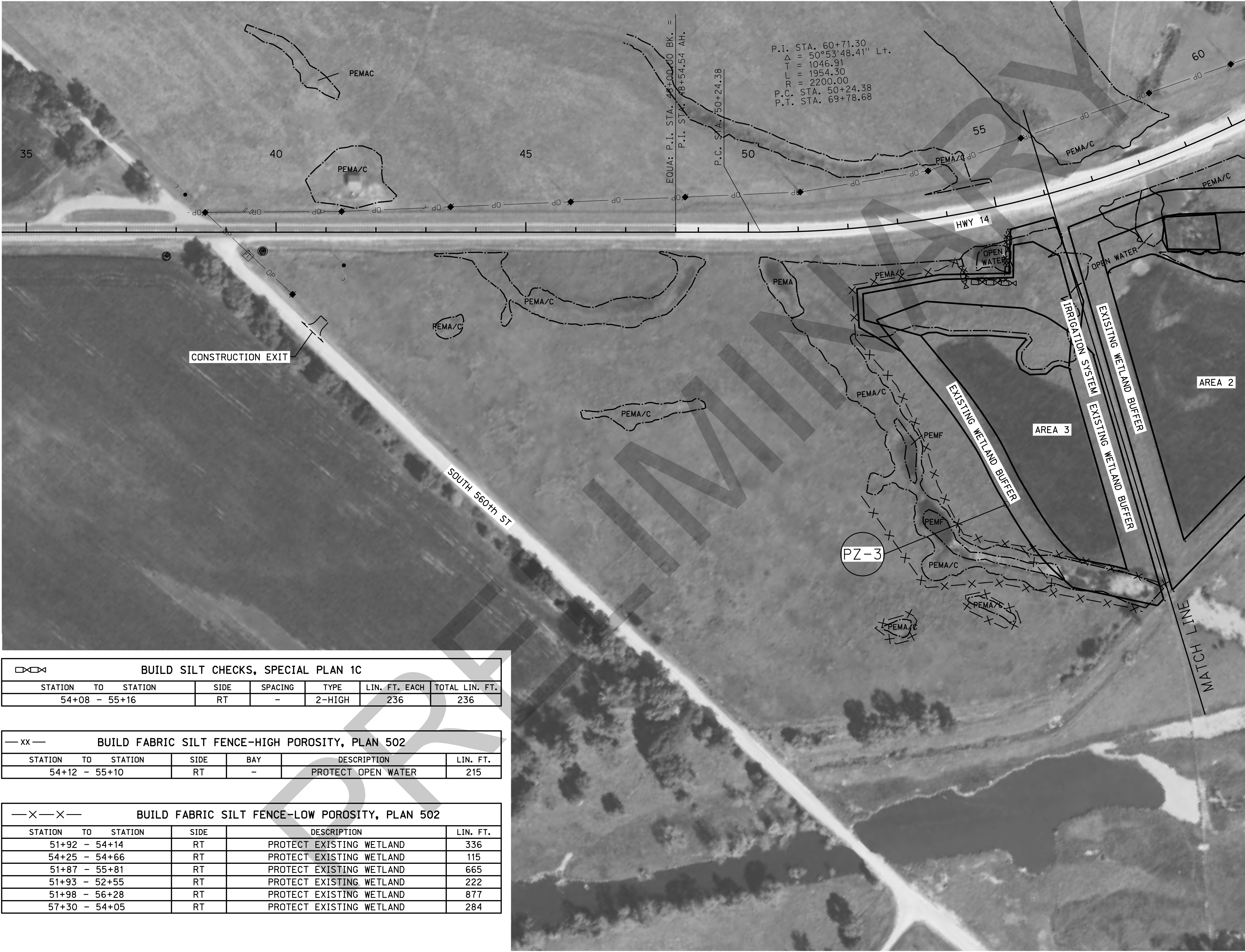
## LEGEND

|            |                            |
|------------|----------------------------|
| — G —      | GAS LINE                   |
| --- E ---  | ELECTRICAL SERVICE         |
| — P —      | POWER LINE                 |
| — OP —     | OVERHEAD POWER LINE        |
| — SAN —    | SANITARY SEWER             |
| — SS —     | STORM SEWER                |
| — T —      | TELEPHONE LINE             |
| — FO —     | FIBER OPTIC TELE. LINE     |
| — OT —     | OVERHEAD TELEPHONE LINE    |
| — TV —     | CABLE TV LINE              |
| — OTV —    | OVERHEAD CABLE TV LINE     |
| — W —      | WATER LINE                 |
| — o —      | FENCE                      |
| — — — — —  | HIGH BANK LINE             |
| — — — — —  | OPEN WATER LIMIT           |
|            | BENCH MARK                 |
|            | CONTROL POINT              |
| XXXXXXXXXX | DIKE                       |
|            | GAS METER                  |
|            | GAS VALVE                  |
|            | GUARDRAIL                  |
|            | GUARD POST                 |
|            | GUY POLE                   |
|            | GUY WIRE                   |
|            | LIGHT POLE                 |
|            | MAILBOX                    |
|            | MANHOLE                    |
|            | MARSH                      |
|            | OIL WELL                   |
|            | POWER BOX                  |
|            | POWER POLE                 |
|            | POWER PULL BOX             |
|            | PROPANE TANK               |
|            | R.O.W. MARKER              |
|            | ADVANCED R.R. WARNING SIGN |
|            | RAILROAD WARNING           |
|            | RAILROAD TRACKS            |
|            | RETAINING WALL             |
|            | SIGN                       |
|            | TRAFFIC SIGNAL             |
|            | TRAFFIC SIGNAL/ST. LIGHT   |
|            | TELEPHONE BOX              |
|            | TELE. FIBER OPTICS BOX     |
|            | TELEPHONE PULL BOX         |
|            | TELEPHONE POLE             |
|            | TELEVISION BOX             |
|            | TREE - CONIFEROUS          |
|            | TREE - DECIDUOUS           |
|            | TREE LINE                  |
|            | TREE STUMP                 |
|            | WATER (FIRE) HYDRANT       |
|            | WATER VALVE                |
|            | WATER METER                |
|            | WELL                       |
|            | WINDMILL                   |





|             |           |
|-------------|-----------|
| PROJECT NO. | SHEET NO. |
| 14-3(1016)  | J1        |
| C.N. 424038 |           |



| BUILD STABILIZED CONSTRUCTION EXIT |          |       |
|------------------------------------|----------|-------|
| STATION                            | SIDE     | WIDTH |
| 40+73                              | 200', RT | 20'   |

| BUILD SILT CHECKS, SPECIAL PLAN 1C |    |         |      |         |        |               |                |
|------------------------------------|----|---------|------|---------|--------|---------------|----------------|
| STATION                            | TO | STATION | SIDE | SPACING | TYPE   | LIN. FT. EACH | TOTAL LIN. FT. |
| 54+08                              | -  | 55+16   | RT   | -       | 2-HIGH | 236           | 236            |

| BUILD FABRIC SILT FENCE-HIGH POROSITY, PLAN 502 |    |         |      |     |                    |
|---|----|---------|------|-----|--------------------|
| STATION   | TO | STATION | SIDE | BAY | DESCRIPTION        |
| 54+12   | -  | 55+10   | RT   | -   | PROTECT OPEN WATER |

| BUILD FABRIC SILT FENCE-LOW POROSITY, PLAN 502 |    |         |      |                          |          |
|--|----|---------|------|--------------------------|----------|
| STATION  | TO | STATION | SIDE | DESCRIPTION              | LIN. FT. |
| 51+92  | -  | 54+14   | RT   | PROTECT EXISTING WETLAND | 336      |
| 54+25  | -  | 54+66   | RT   | PROTECT EXISTING WETLAND | 115      |
| 51+87  | -  | 55+81   | RT   | PROTECT EXISTING WETLAND | 665      |
| 51+93  | -  | 52+55   | RT   | PROTECT EXISTING WETLAND | 222      |
| 51+98  | -  | 56+28   | RT   | PROTECT EXISTING WETLAND | 877      |
| 57+30  | -  | 54+05   | RT   | PROTECT EXISTING WETLAND | 284      |

EROSION CONTROL



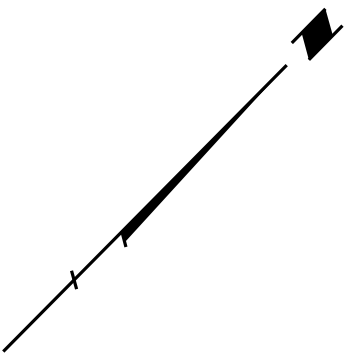
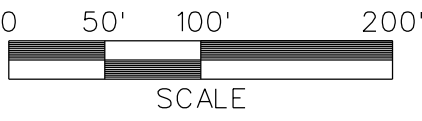
| BUILD STABILIZED CONSTRUCTION EXIT |         |       |
|------------------------------------|---------|-------|
| STATION                            | SIDE    | WIDTH |
| 61+75                              | RT      | 20'   |
| 70+31                              | 796' RT | 20'   |



| —X—X— BUILD FABRIC SILT FENCE-LOW POROSITY, PLAN 502 |    |         |      |                           |          |
|--|----|---------|------|---------------------------|----------|
| STATION  | TO | STATION | SIDE | DESCRIPTION               | LIN. FT. |
| 57+40  | -  | 58+43   | RT   | PROTECT OPEN WATER        | 288      |
| 64+55  | -  | 68+12   | RT   | PROTECT OPEN WATER        | 1095     |
| 60+11  | -  | 60+14   | RT   | PROTECT EXISTING WETLANDS | 280      |
| 62+05  | -  | 64+48   | RT   | PROTECT EXISTING WETLANDS | 430      |
| 69+12  | -  | 70+40   | RT   | PROTECT EXISTING WETLANDS | 199      |

## EROSION CONTROL





LEGEND

- (E) END POST
- (C) CORNER POST
- (P) PULL POST
- (G) VEHICULAR GATE
- x— 5-STRAND WIRE FENCE
- x— EXISTING FENCE

GEOMETRICS

- |    |                 |                |
|----|-----------------|----------------|
| 1  | X= 2197188.3900 | Y= 554392.8957 |
| 2  | X= 2196893.1641 | Y= 554386.1063 |
| 3  | X= 2196597.9382 | Y= 554379.3168 |
| 4  | X= 2196302.7124 | Y= 554372.5273 |
| 5  | X= 2196007.4865 | Y=554365.7378  |
| 6  | X= 2195991.4907 | Y= 554365.3699 |
| 7  | X= 2195793.0216 | Y= 554360.8056 |
| 8  | X= 2196116.1988 | Y= 554680.7676 |
| 9  | X= 2196439.3760 | Y= 555000.7295 |
| 10 | X= 2196446.3906 | Y= 554993.6444 |
| 11 | X= 2196611.0461 | Y= 555147.0600 |
| 12 | X= 2196748.4612 | Y= 555324.0957 |
| 13 | X= 2196893.1247 | Y= 555549.2980 |
| 14 | X= 2197024.7646 | Y= 555475.8265 |
| 15 | X= 2197038.7701 | Y= 555468.0903 |

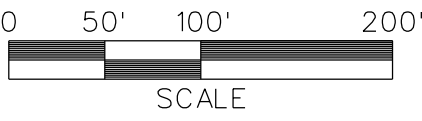


| BUILD 5-STRAND WIRE FENCE, PLAN 715 * |            |      |          |                |      |        |
|---------------------------------------|------------|------|----------|----------------|------|--------|
| STATION                               | TO STATION | SIDE | LIN. FT. | POSTS          |      |        |
|                                       |            |      |          | END            | PULL | CORNER |
| 39+38                                 | 56+08      | RT   | 3019     | 4              | 6    | 5      |
|                                       |            |      |          | VEHICLE GATE** |      |        |
|                                       |            |      |          | 2              |      |        |

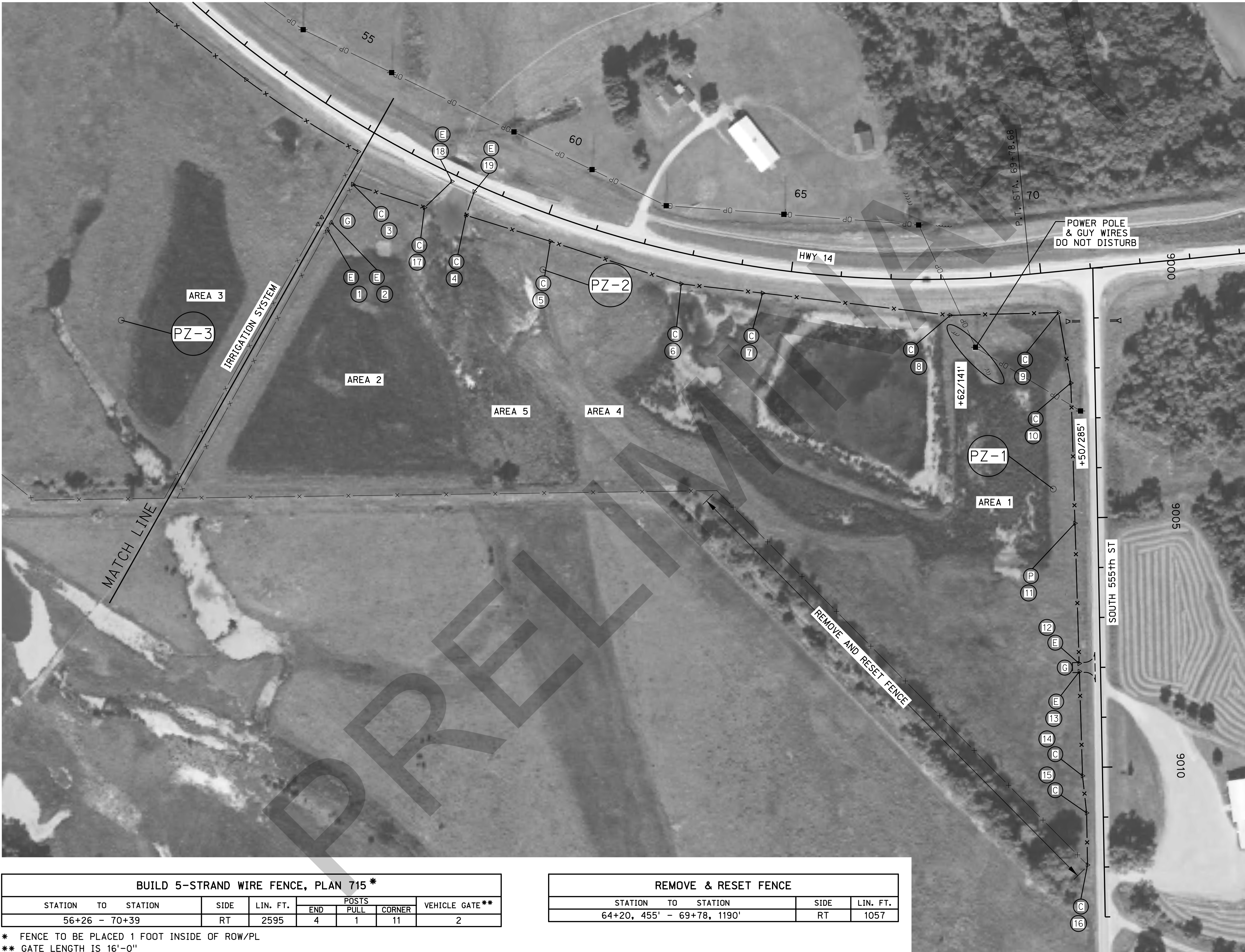
\* FENCE TO BE PLACED 1 FOOT INSIDE OF ROW/PL  
\*\* GATE LENGTH IS 16'-0"

FENCING





| PROJECT NO. | SHEET NO. |
|-------------|-----------|
| 14-3(1016)  | J4        |
| C.N. 42403B |           |



LEGEND

- (E) END POST
- (C) CORNER POST
- (P) PULL POST
- (G) VEHICULAR GATE
- x— 5-STRAND WIRE FENCE
- x— EXISTING FENCE

GEOMETRICS

|   |                 |                |
|---|-----------------|----------------|
| ① | X= 2197049.3165 | Y= 555487.1835 |
| ② | X= 2197035.3111 | Y= 555494.9196 |
| ③ | X= 2196958.5346 | Y= 555537.8911 |
| ④ | X= 2197020.5630 | Y= 555764.7298 |
| ⑤ | X= 2197437.5116 | Y= 557435.5460 |
| ⑥ | X= 2197487.9115 | Y= 557435.5465 |
| ⑦ | X= 2197538.3115 | Y= 557435.5470 |
| ⑧ | X= 2197220.7776 | Y= 556734.0756 |
| ⑨ | X= 2197215.3577 | Y= 556950.7867 |
| ⑩ | X= 2197356.4387 | Y= 556975.3735 |
| ⑪ | X= 2197637.3029 | Y= 556983.7156 |
| ⑫ | X= 2197918.1672 | Y= 556992.0576 |
| ⑬ | X= 2197934.1601 | Y= 556992.5326 |
| ⑭ | X= 2198143.2051 | Y= 556998.7415 |
| ⑮ | X= 2198217.5419 | Y= 557006.9447 |
| ⑯ | X= 2198321.8348 | Y= 557008.7654 |
| ⑰ | X= 2197005.0081 | Y= 555681.6442 |
| ⑱ | X= 2196952.4325 | Y= 555736.4361 |
| ⑲ | X= 2196972.9976 | Y= 555781.0859 |

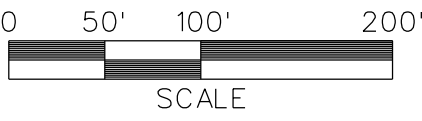
| BUILD 5-STRAND WIRE FENCE, PLAN 715 * |            |      |          |       |      |        |                |
|---------------------------------------|------------|------|----------|-------|------|--------|----------------|
| STATION                               | TO STATION | SIDE | LIN. FT. | POSTS |      |        | VEHICLE GATE** |
|                                       |            |      |          | END   | PULL | CORNER |                |
| 56+26                                 | 70+39      | RT   | 2595     | 4     | 1    | 11     | 2              |

\* FENCE TO BE PLACED 1 FOOT INSIDE OF ROW/PL  
\*\* GATE LENGTH IS 16'-0"

| REMOVE & RESET FENCE |              |      |          |
|----------------------|--------------|------|----------|
| STATION              | TO STATION   | SIDE | LIN. FT. |
| 64+20, 455'          | 69+78, 1190' | RT   | 1057     |

FENCING





| PROJECT NO. | SHEET NO. |
|-------------|-----------|
| 14-3(1016)  | P1        |
| C.N. 424038 |           |

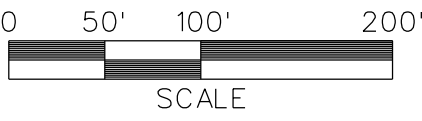


| LEGEND  |                                |
|---|--------------------------------|
|   | WETLAND LOW SEED MIX - 3.4 AC. |
| MULCH (BUFFER SEEDING AREAS) = 7.4 TONS           |                                |
| HYDROMULCH-HM2 (WETLAND SEEDING AREAS) = 5.1 TONS |                                |

- NOTE:
1. ANY DISTURBANCE IN THE EXISTING WETLAND BUFFER AREA IS TO BE RESTORED AND SEEDED WITH THE APPROPRIATE MIX AS DIRECTED BY THE ENGINEER.
  2. BEFORE SEEDING, SILT FENCE BETWEEN THE EXISTING WETLANDS AND THE GRADED WETLANDS WILL BE REMOVED. FINAL GRADING WILL BE COMPLETED TO PROVIDE A SMOOTH TRANSITION BETWEEN THE TWO AREAS.

SEEDING

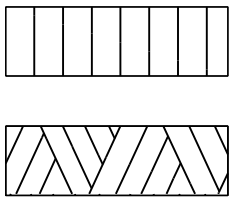




| PROJECT NO. | SHEET NO. |
|-------------|-----------|
| 14-3(1016)  | P2        |
| C.N. 42403B |           |



LEGEND



BUFFER SEED MIX - 1.3 AC.

WETLAND LOW SEED MIX - 12.9 AC.

MULCH (BUFFER SEEDING AREAS) = 2.3 TONS  
HYDROMULCH-HM2 (WETLAND SEEDING AREAS) = 19.4 TONS

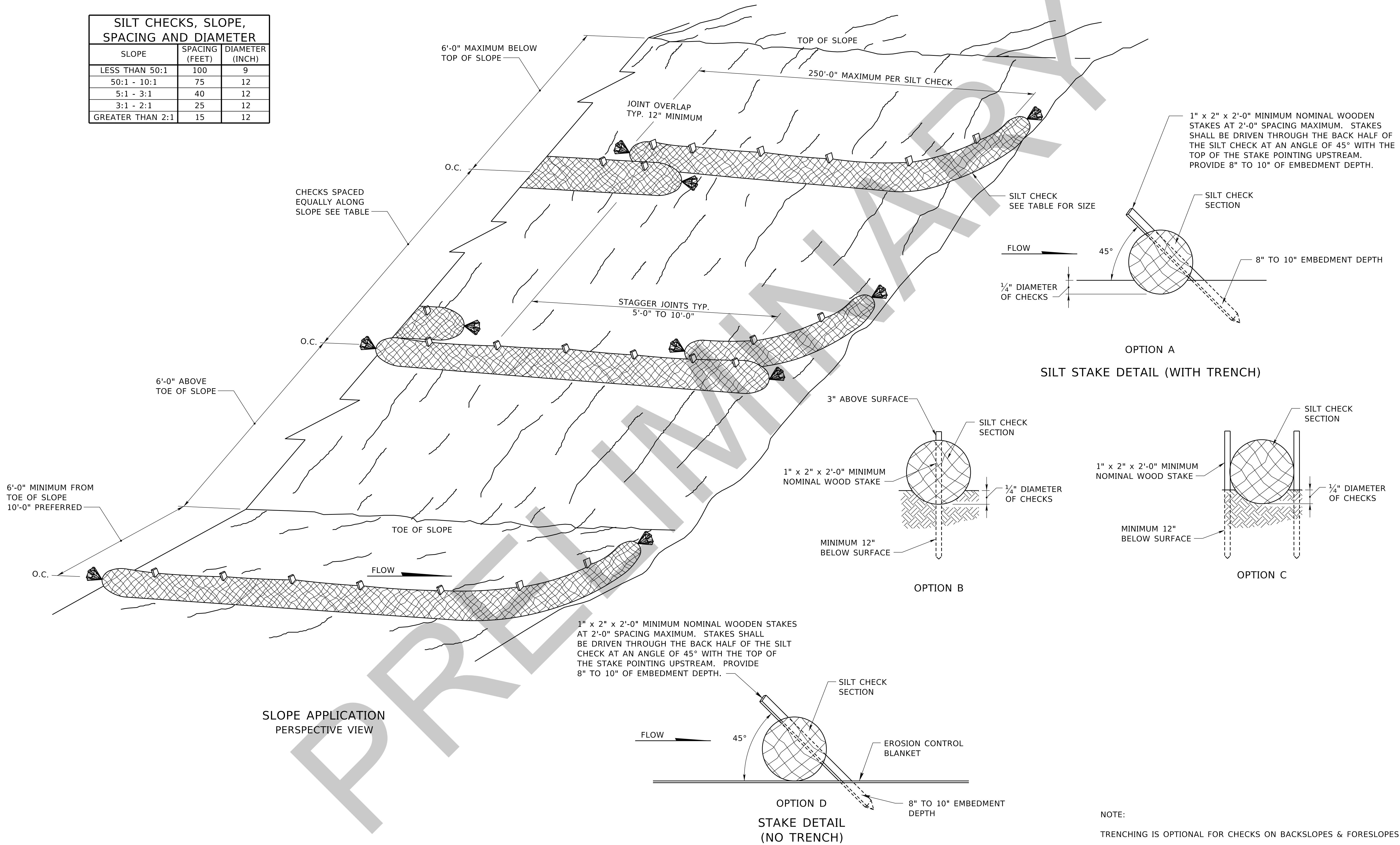
NOTE:

1. ANY DISTURBANCE IN THE EXISTING WETLAND BUFFER AREA IS TO BE RESTORED AND SEEDED WITH THE APPROPRIATE MIX AS DIRECTED BY THE ENGINEER.
2. BEFORE SEEDING, SILT FENCE BETWEEN THE EXISTING WETLANDS AND THE GRADED WETLANDS WILL BE REMOVED. FINAL GRADING WILL BE COMPLETED TO PROVIDE A SMOOTH TRANSITION BETWEEN THE TWO AREAS.

SEEDING



| SILT CHECKS, SLOPE, SPACING AND DIAMETER |                |                 |
|--|----------------|-----------------|
| SLOPE                                    | SPACING (FEET) | DIAMETER (INCH) |
| LESS THAN 50:1                           | 100            | 9               |
| 50:1 - 10:1                              | 75             | 12              |
| 5:1 - 3:1                                | 40             | 12              |
| 3:1 - 2:1                                | 25             | 12              |
| GREATER THAN 2:1                         | 15             | 12              |

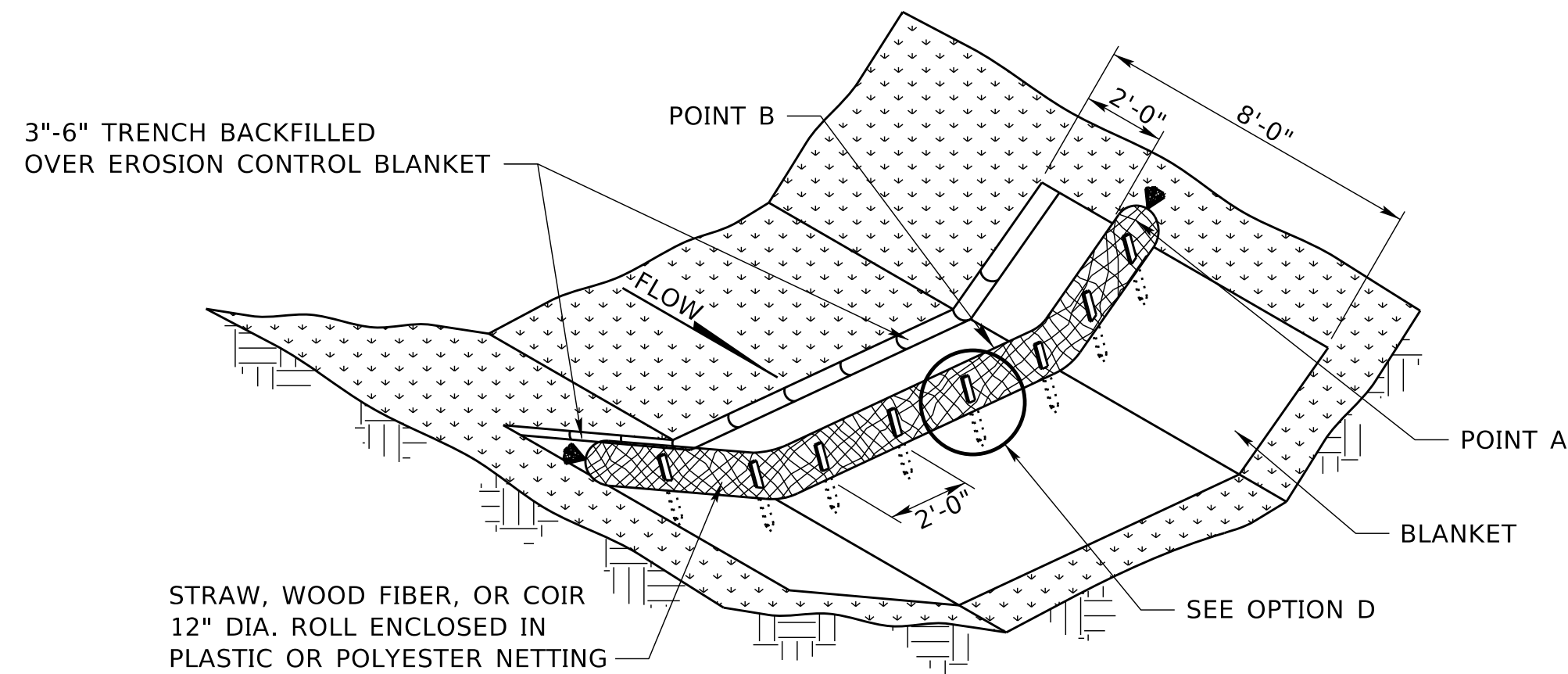


NOTE:  
TRENCHING IS OPTIONAL FOR CHECKS ON BACKSLOPES & FORESLOPES

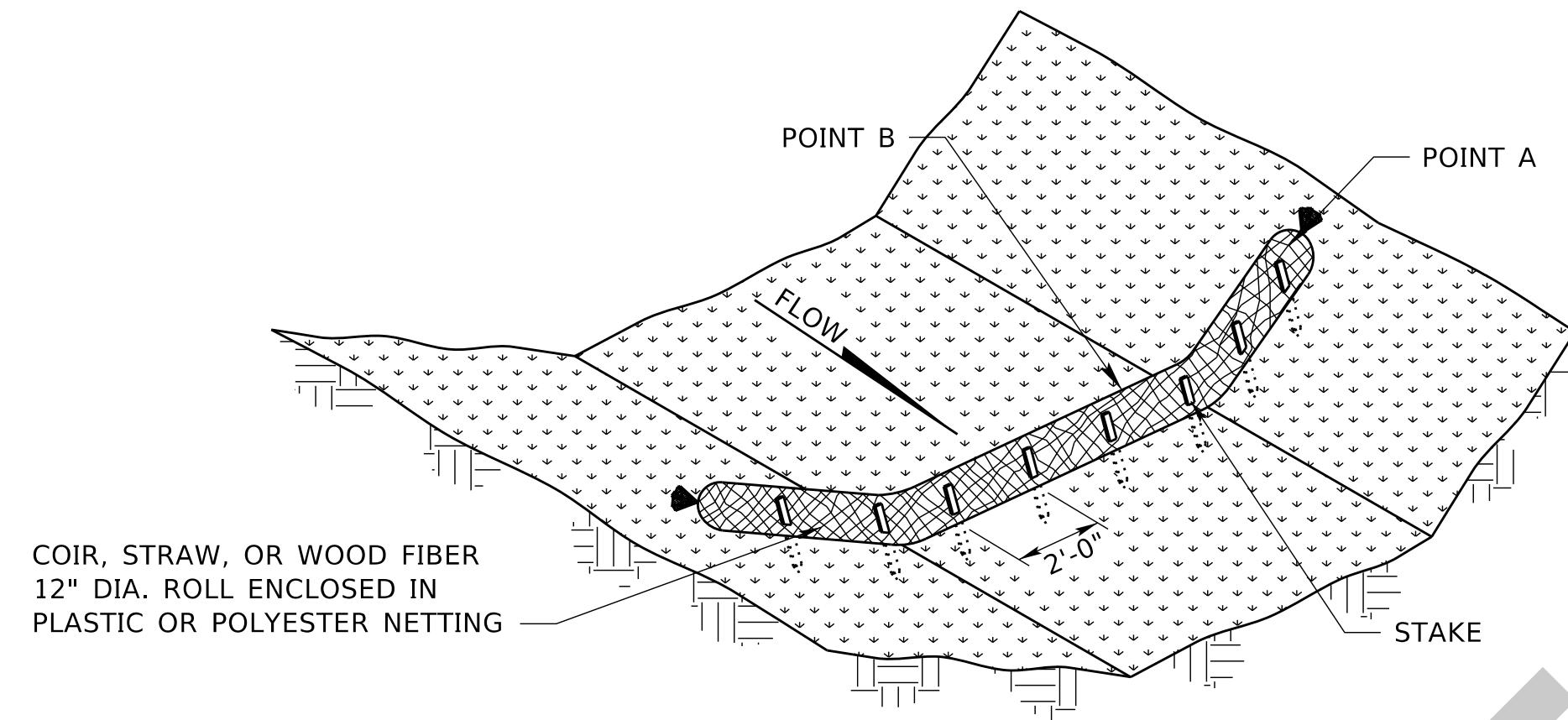
COMPUTER: BG0419M593

DATE: 1-APR-2024 18:09

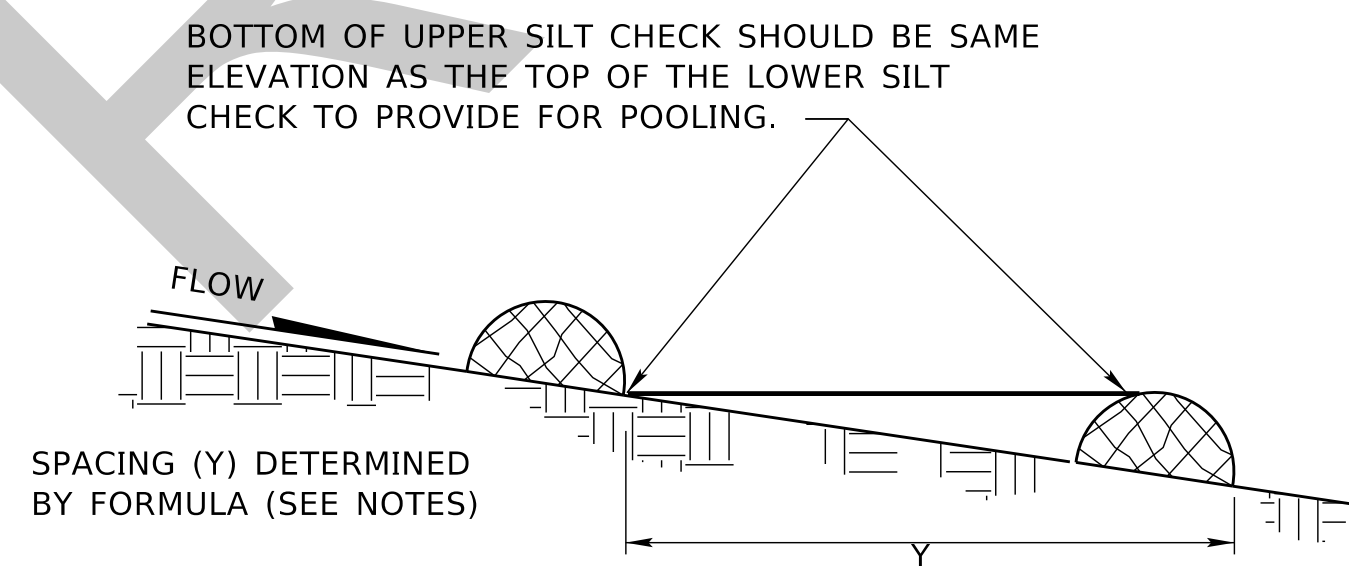
FILE: 42403B Sheets Specials.dgn



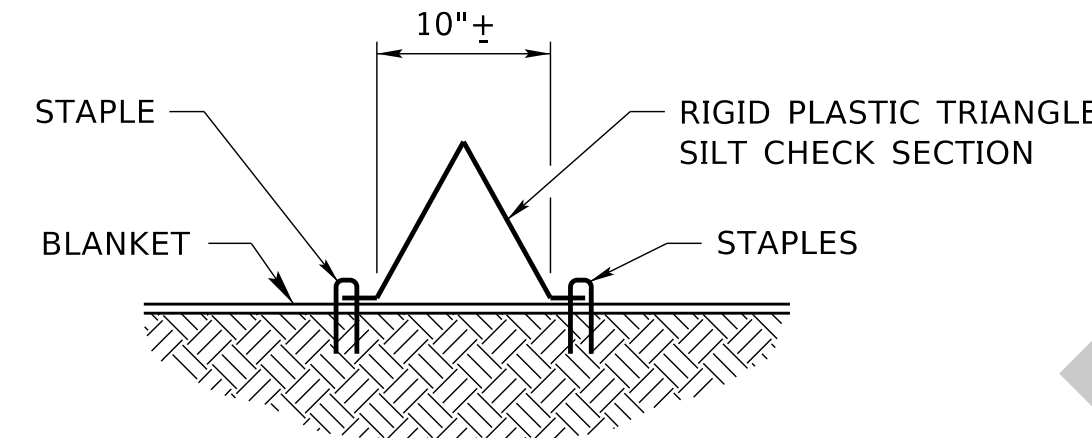
TYPE 2 & 3: HIGH & LOW  
WITH EROSION CONTROL



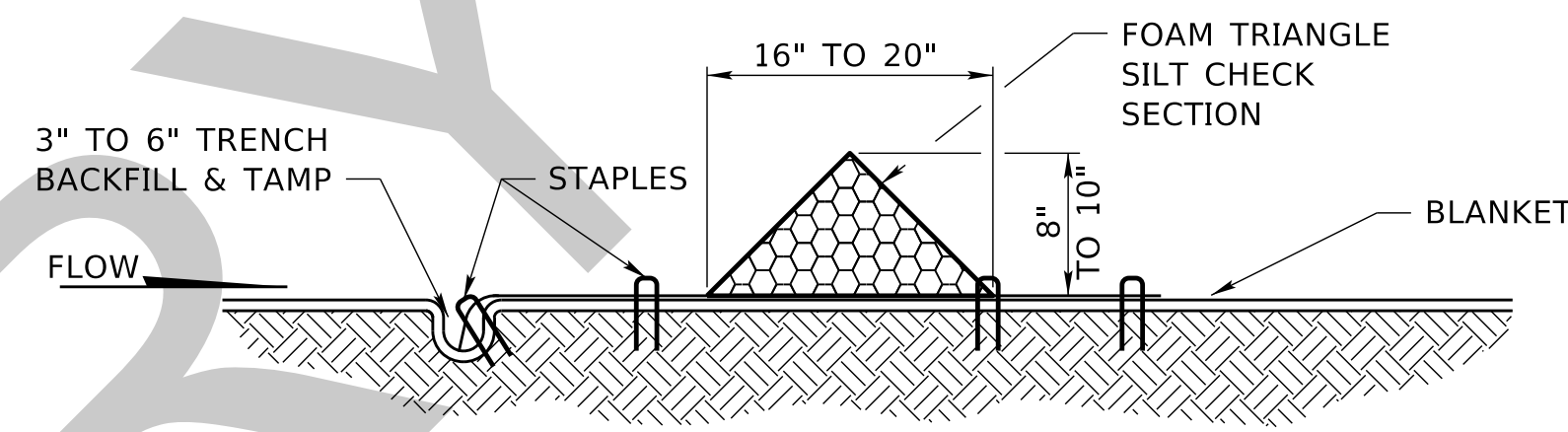
TYPE 1, 2 & 3: HIGH & LOW  
USE ON ROUGH GRADED & BARE SOIL AREAS



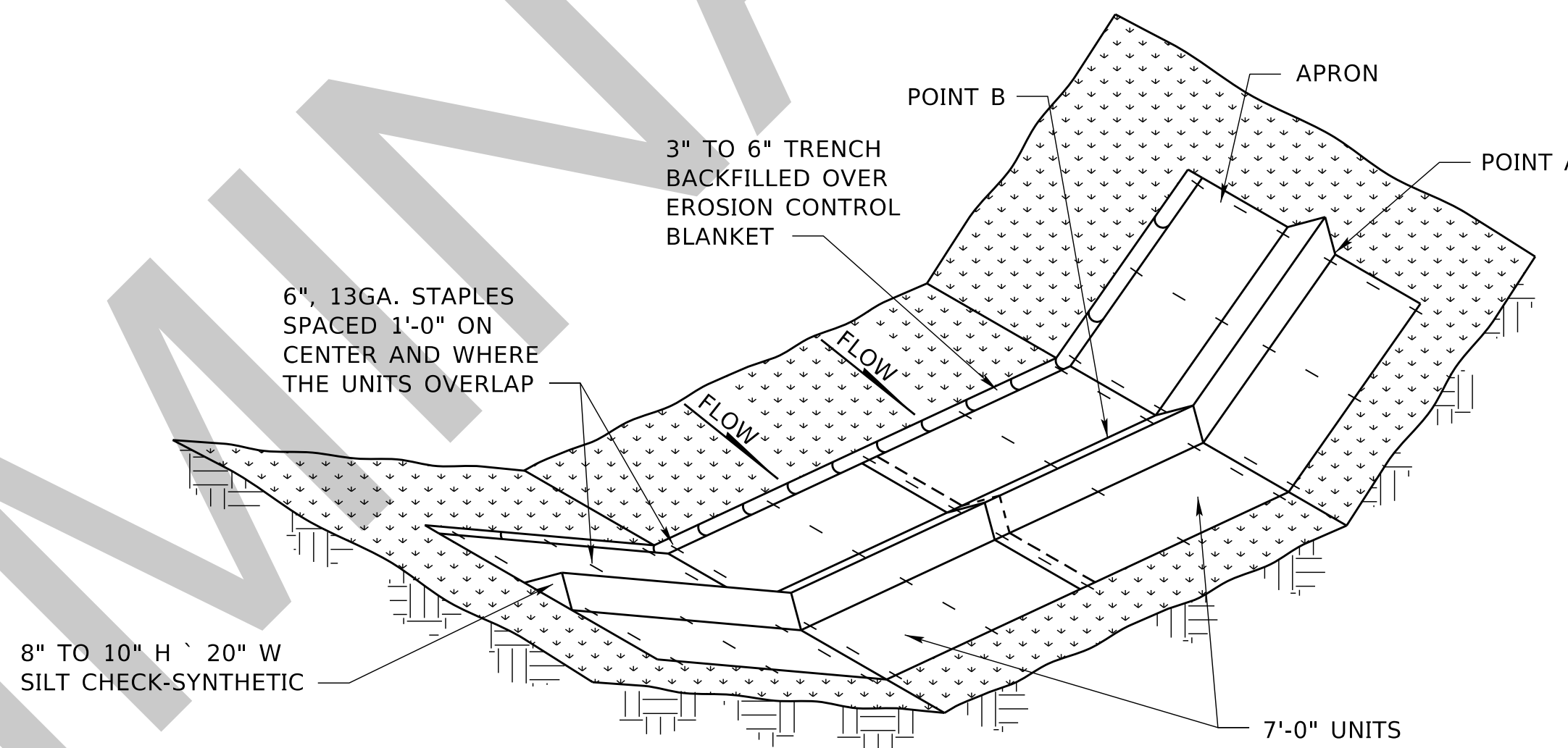
SILTING CHECK SPACING-DITCH



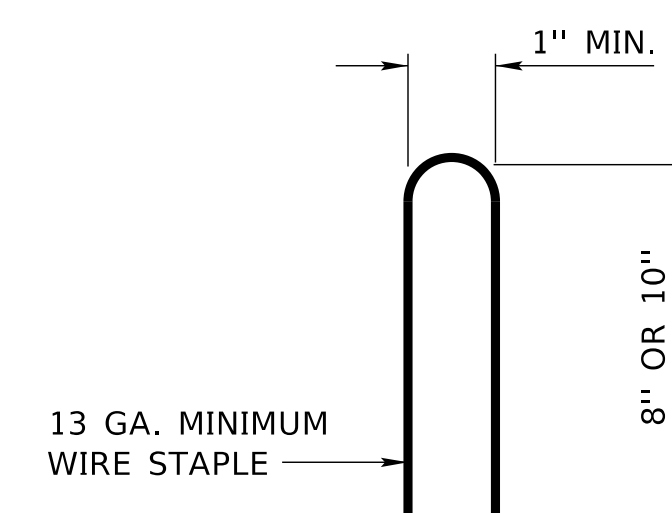
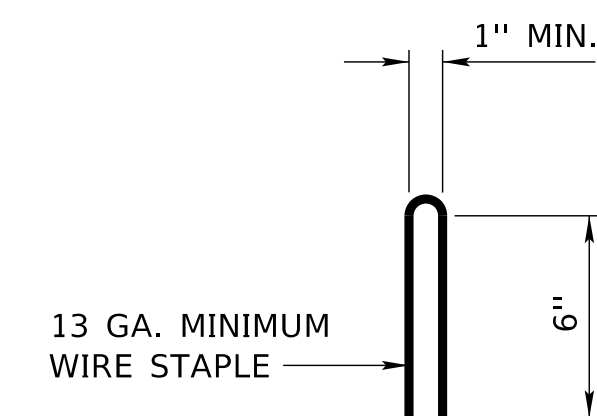
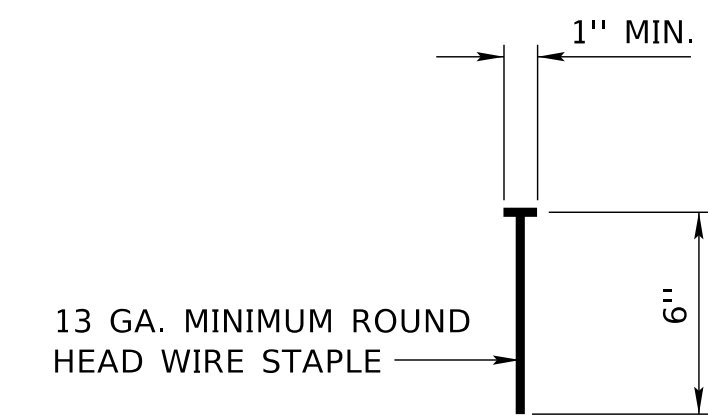
TYPE 4 SECTION



TYPE 4 SECTION



SILTING CHECK: TYPE 4



WIRE STAPLE DETAIL

NOTES:

APPROXIMATE SPACING BETWEEN EACH DITCH CHECK SHOULD BE DETERMINED FROM THE FOLLOWING SPACING FORMULA:

APPROXIMATE SPACING OF DITCH CHECKS (FT.) = 
$$Y = \frac{\text{SILTING CHECK HEIGHT (FT.)}}{\% \text{ CHANNEL SLOPE}} \times 100$$

POINT A MUST BE A MINIMUM OF 6" HIGHER THAN POINT B TO ENSURE THAT WATER FLOWS OVER THE CHECK AND NOT AROUND THE ENDS.

PERMANENT ROCK CHECKS PLACED WITHIN THE CLEAR ZONE WILL NEED TO BE 18" OR LESS IN HEIGHT. A 10:1 APPROACH AND DEPARTURE SLOPE SHALL BE PROVIDED.

THE TRENCH ON THE UPSTREAM SIDE OF THE SILTING CHECK IS NOT REQUIRED IF THE EROSION CONTROL BLANKET CONTINUES IN THE ENTIRE LENGTH OF THE DITCH.

THE MANUFACTURERS RECOMMENDED INSTALLATION DETAILS SHALL GOVERN OVER THE PLANS.

SEE STAKING DETAIL SHEET 1 OF 4

U2

Project Number

14-3(1016)

C.N. 42403B

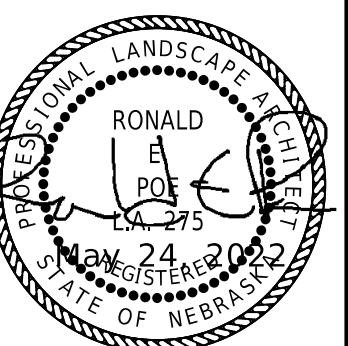
SPECIAL PLAN 1C

2 OF 4

SILTING CHECKS ALL TYPES

NEBRASKA  
Good Life. Great Journey.  
DEPARTMENT OF TRANSPORTATION

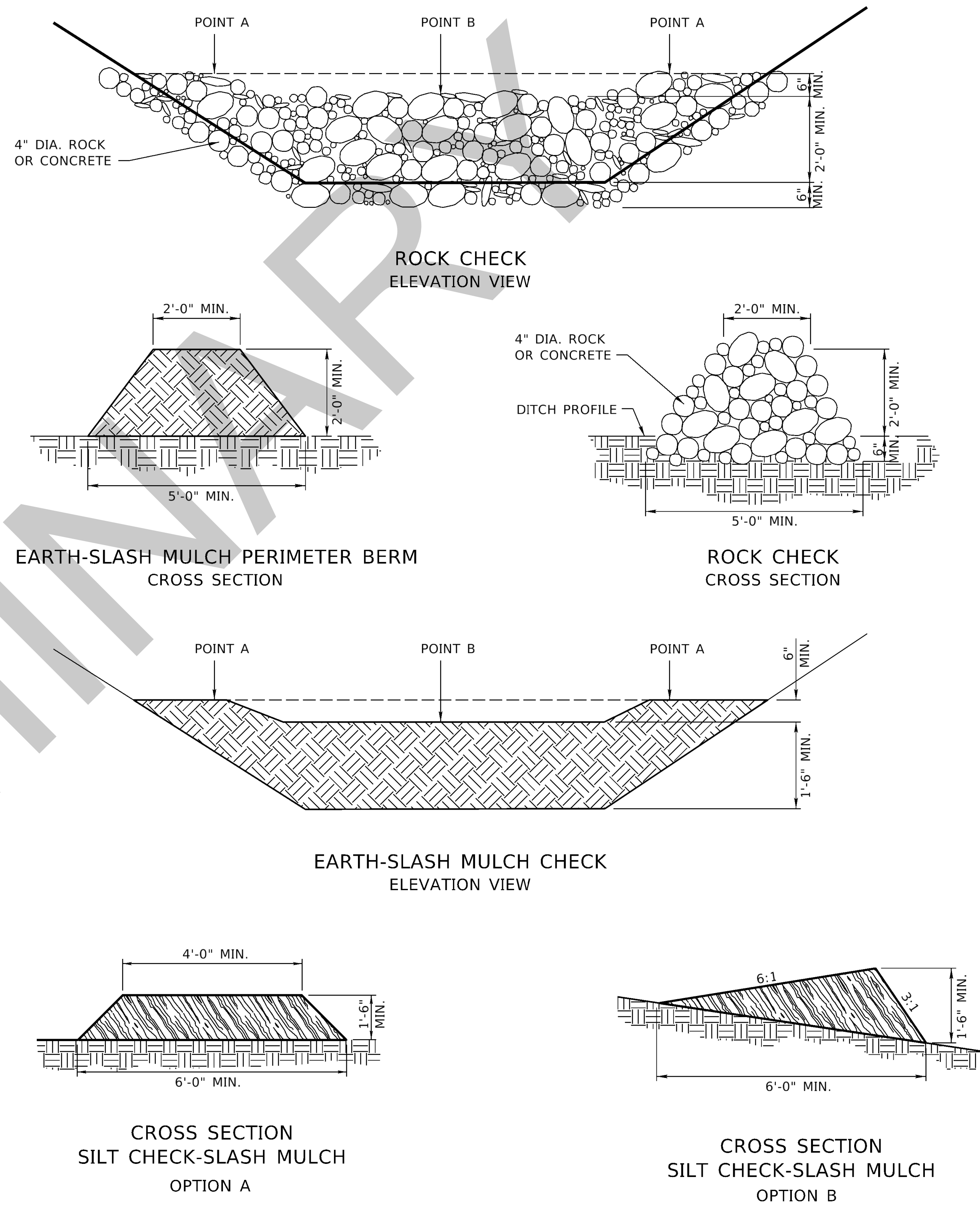
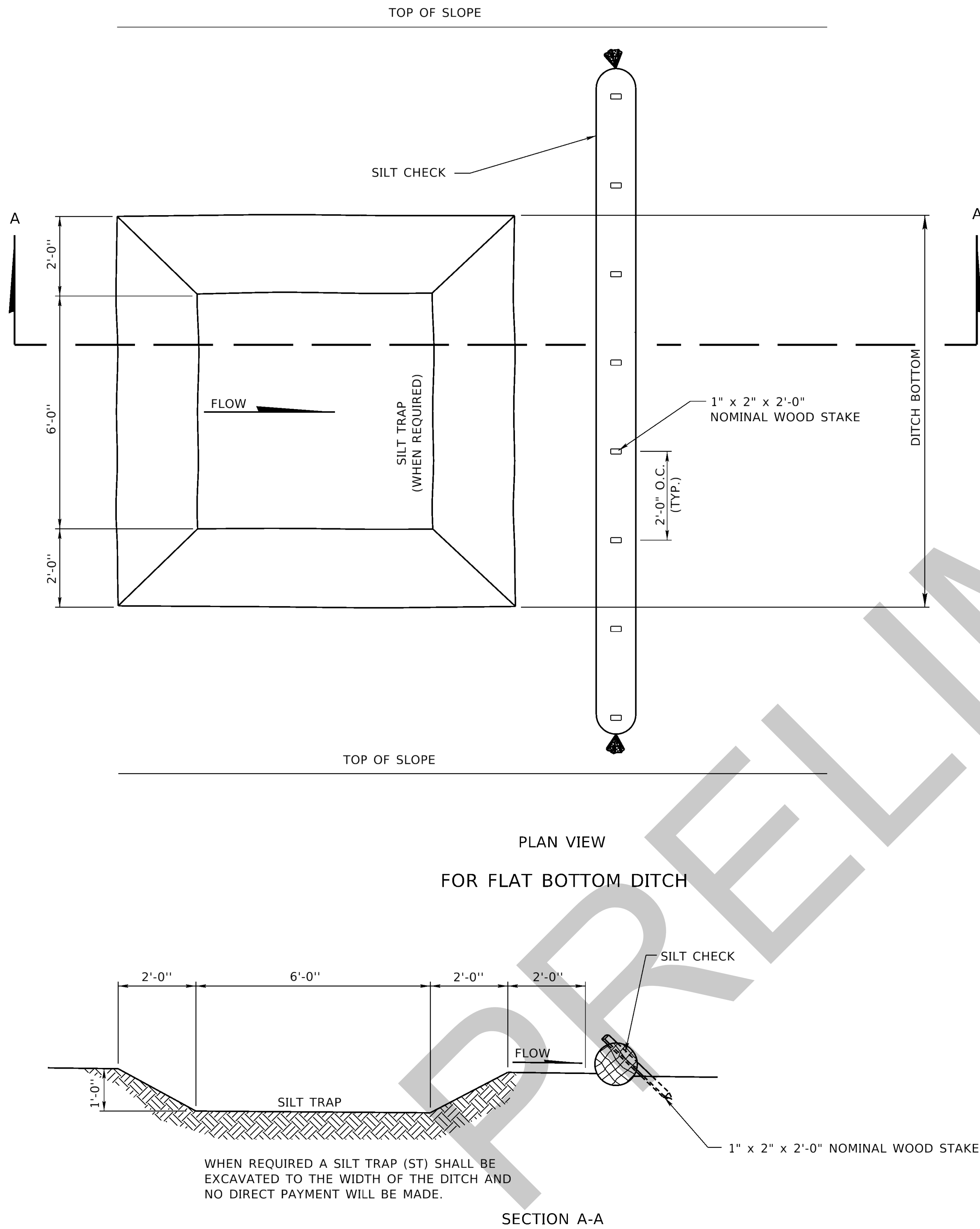
Roadway  
Design  
Division



COMPUTER: BG0419M593

DATE: 1-APR-2024 18:10

FILE: 42403B Sheets Specials.dgn



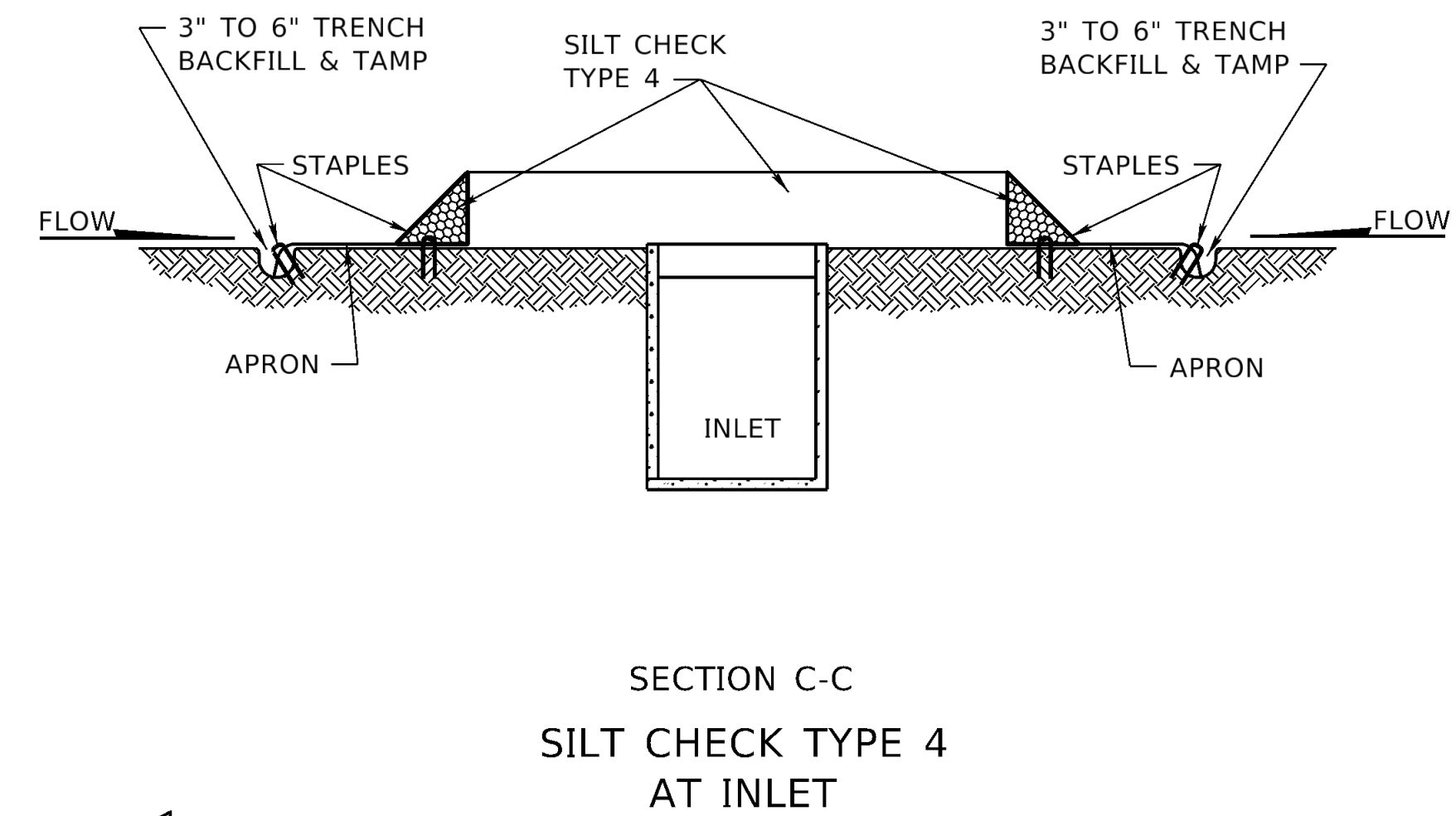
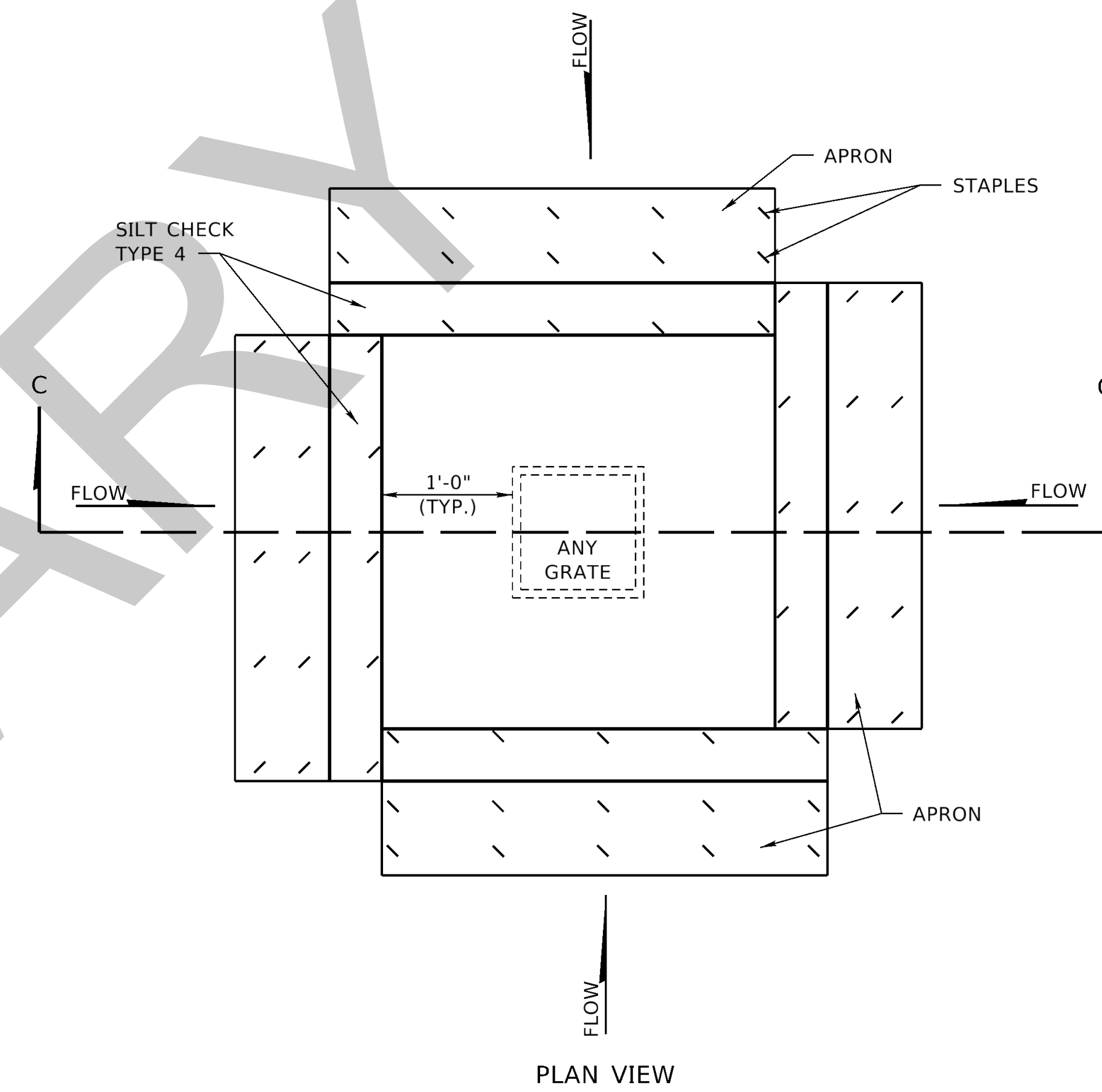
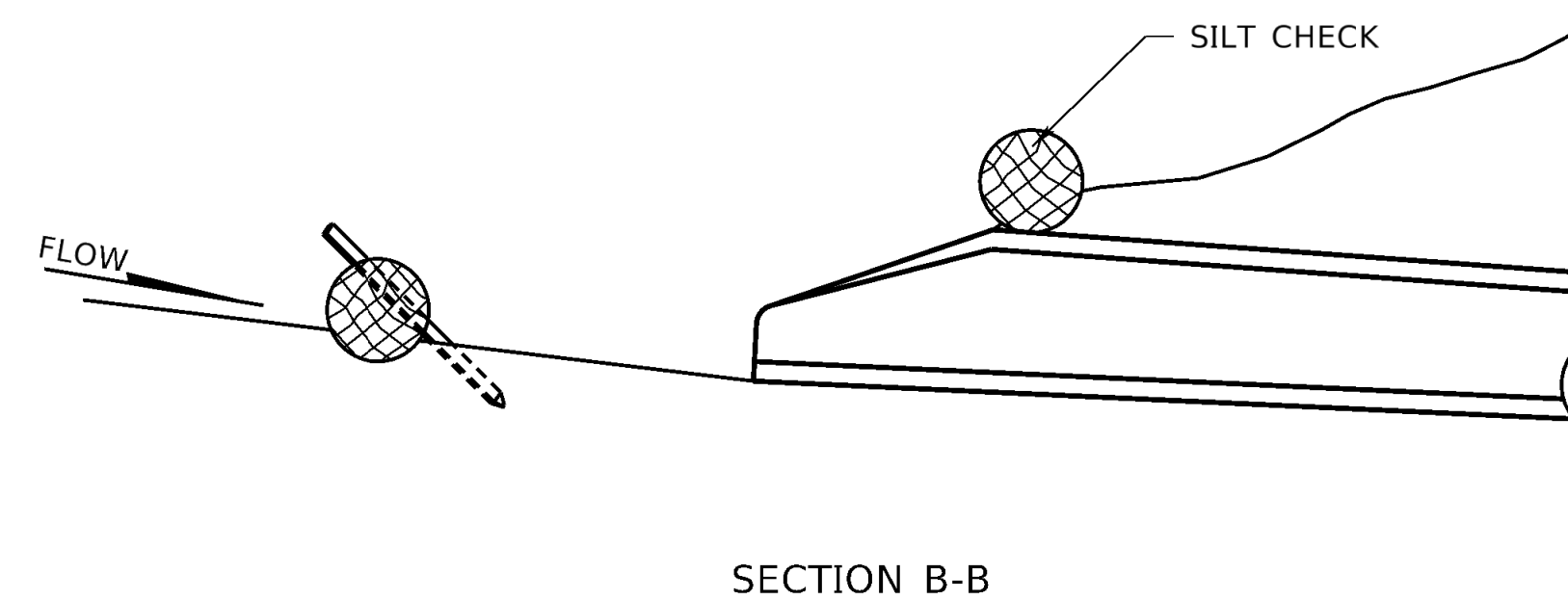
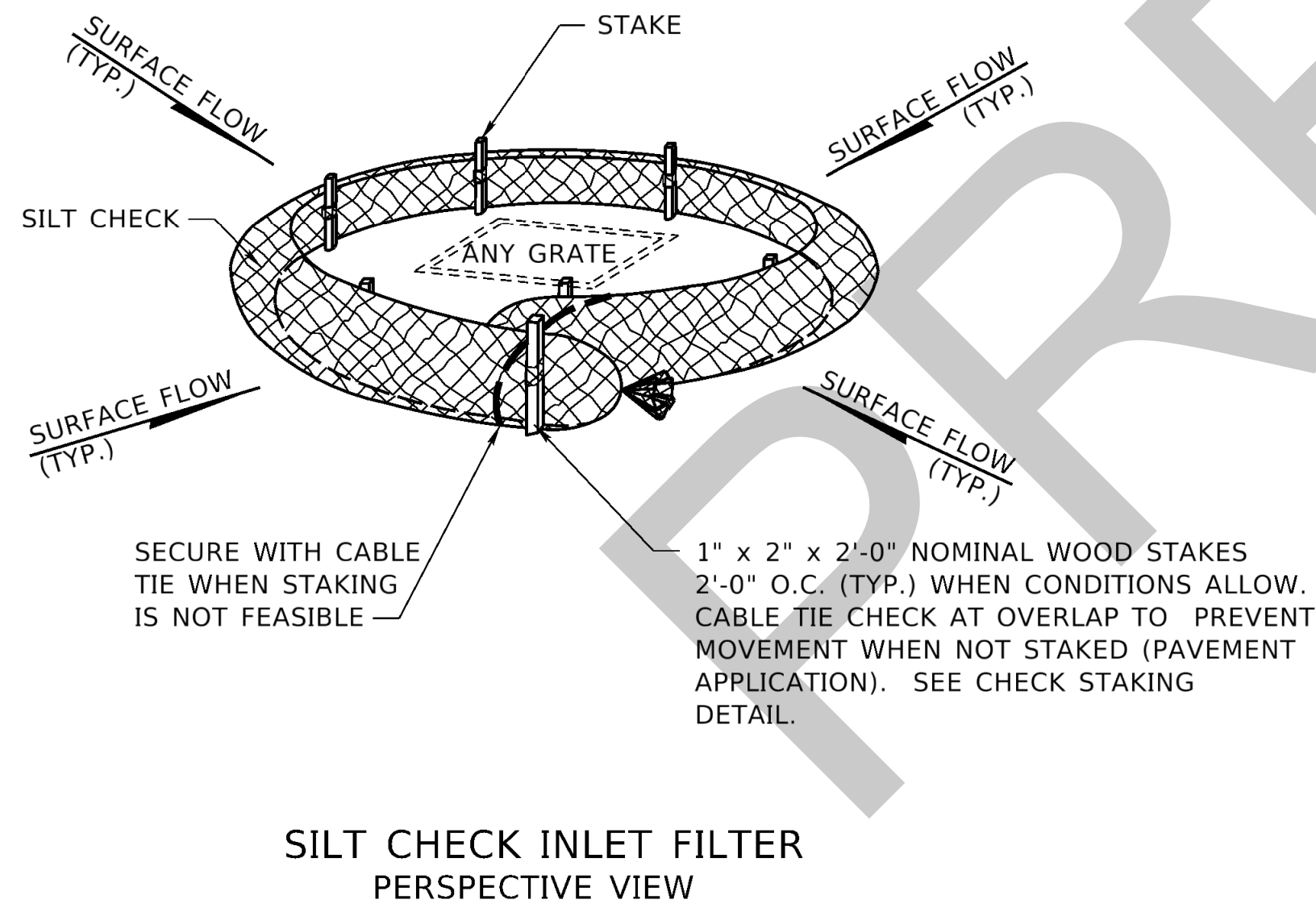
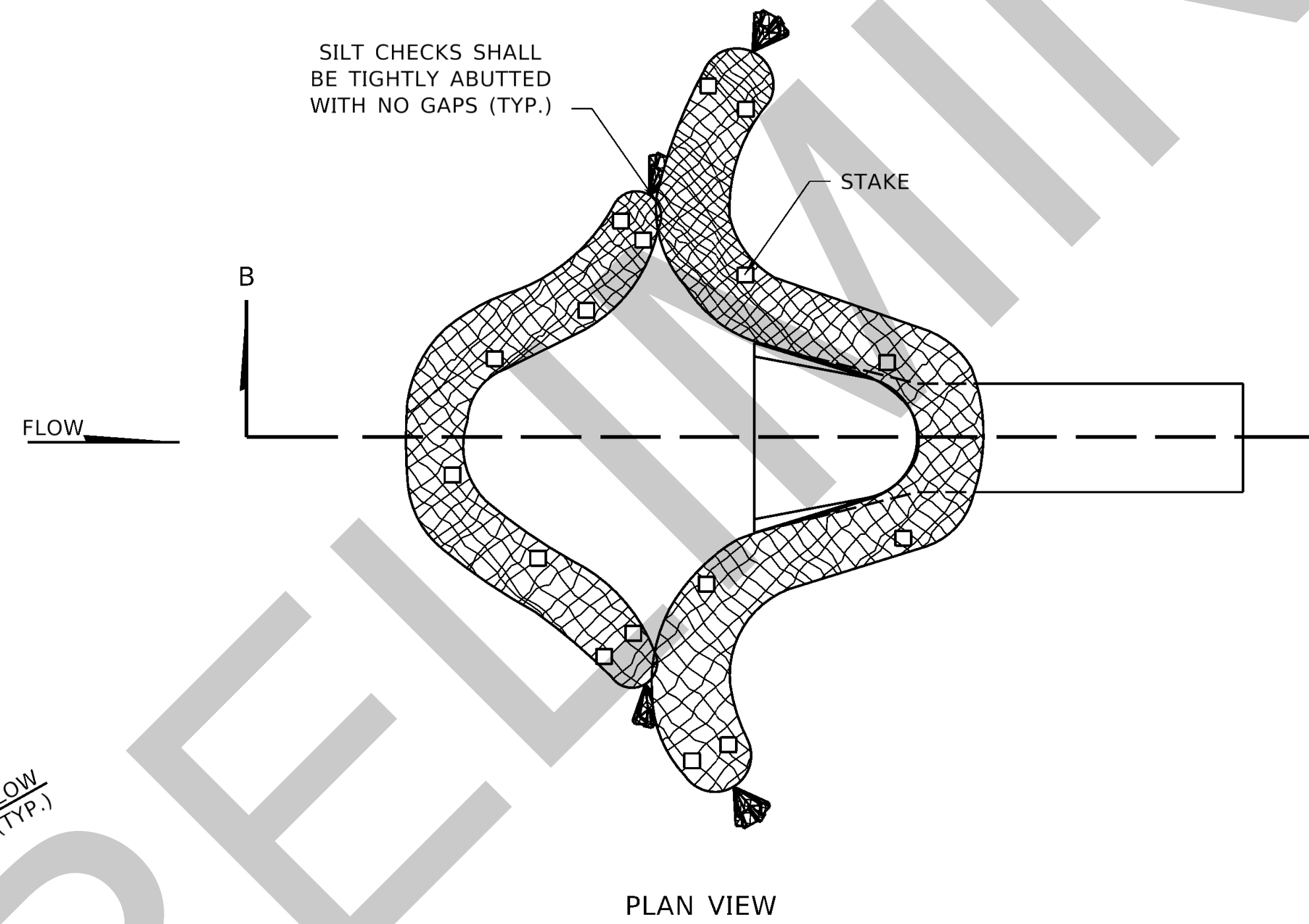
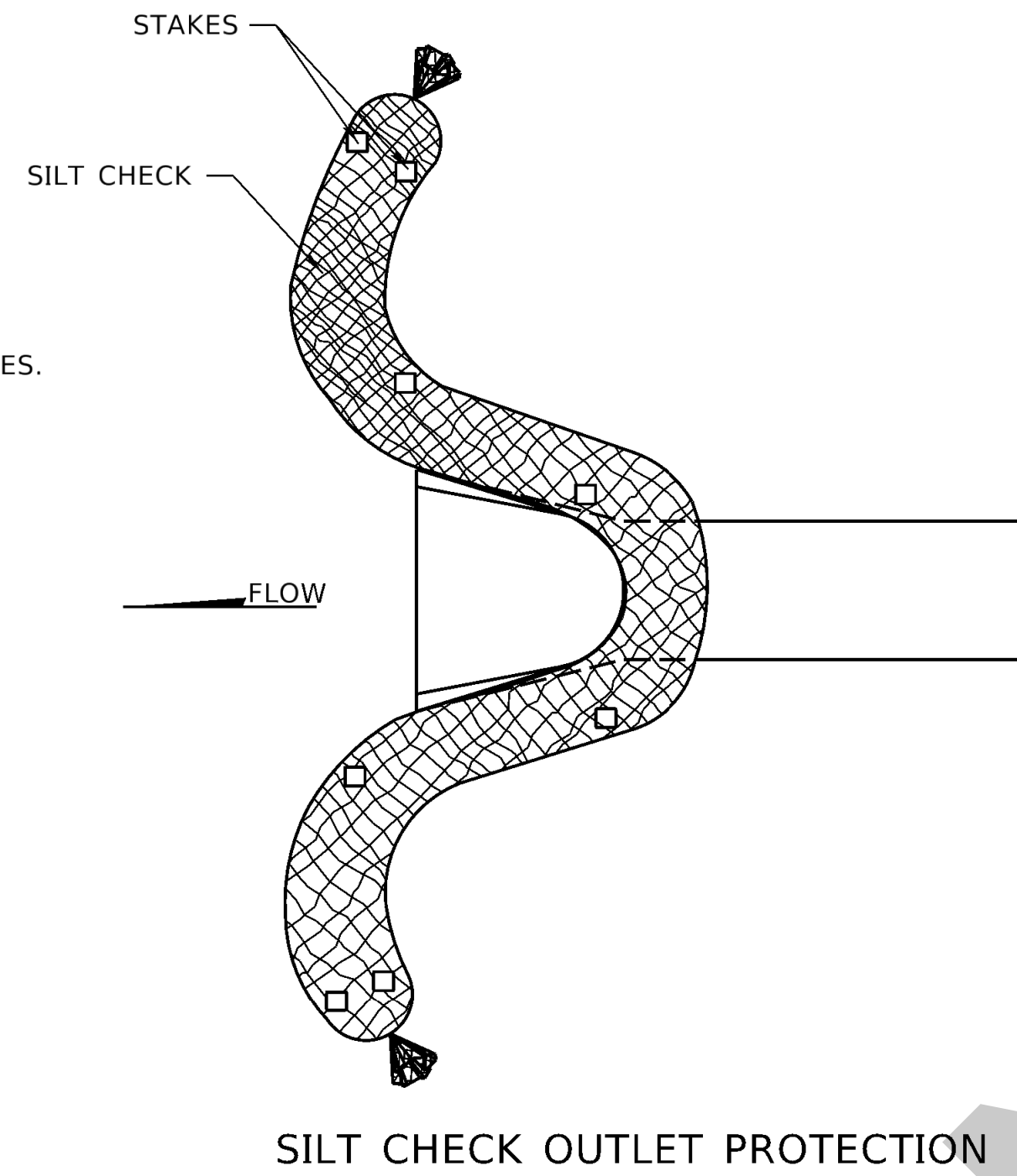
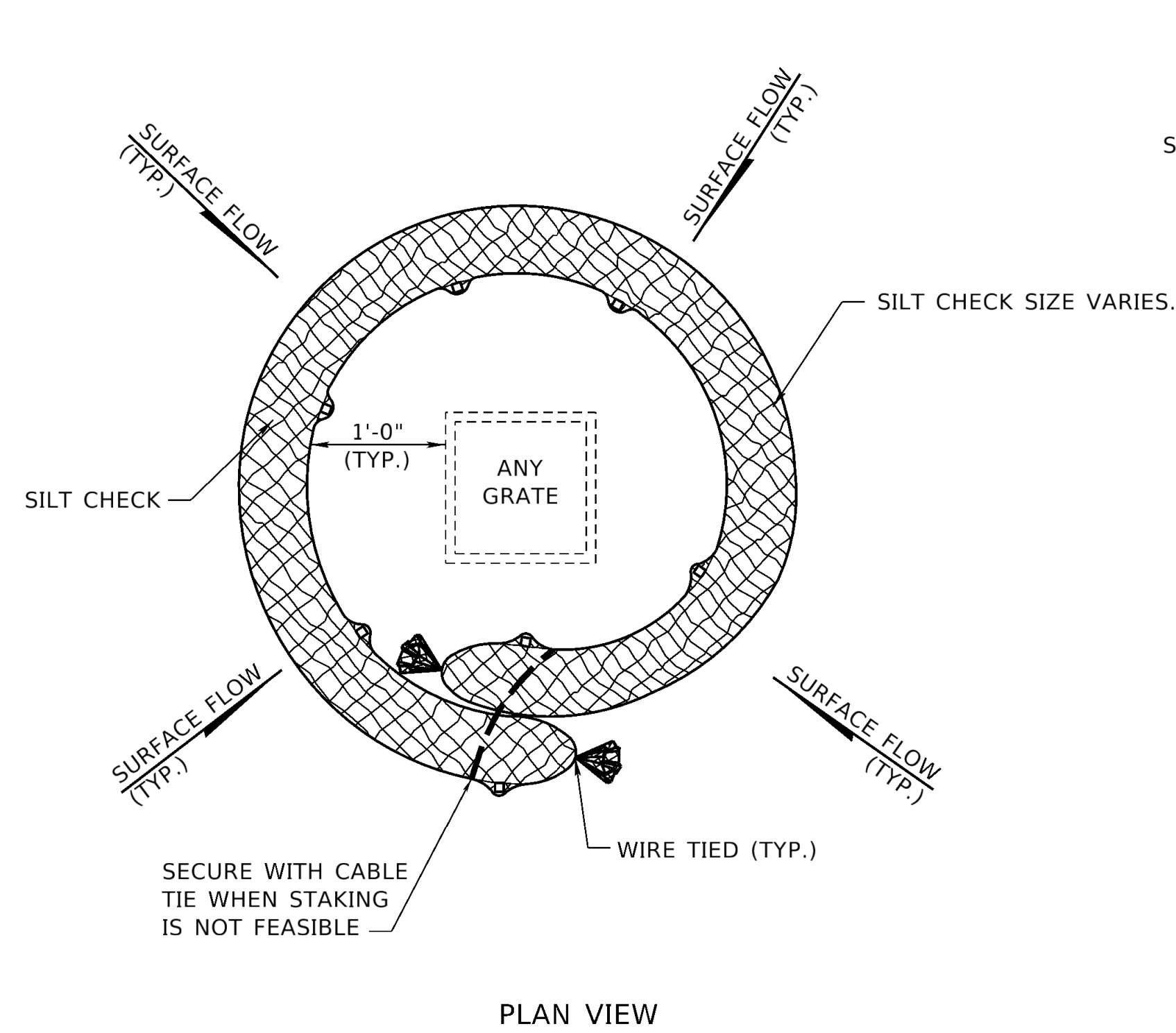
SEE STAKING DETAIL SHEET 1 OF 4

|  |
|--|
| U3   |
| Project Number<br>14-3(1016)   |
| C.N. 42403B  |
| SPECIAL PLAN 1C<br>3 OF 4<br>SILT CHECKS ALL TYPES   |
| NEBRASKA<br>Good Life. Great Journey.<br>DEPARTMENT OF TRANSPORTATION                                |
| Roadway<br>Design<br>Division  |
| PROFESSIONAL LANDSCAPE ARCHITECT<br>RONALD A. LUKS<br>24 APR 2024<br>REGISTERED<br>STATE OF NEBRASKA |

COMPUTER: BG0419M593

DATE: 1-APR-2024 18:11

FILE: 42403B Sheets Specials.dgn



SEE STAKING DETAIL SHEET 1 OF 4

U4  
Project Number  
14-3(1016)  
C.N. 42403B

SPECIAL PLAN 1C  
4 OF 4  
SILT CHECKS ALL TYPES

NEBRASKA  
Good Life. Great Journey.  
DEPARTMENT OF TRANSPORTATION

Roadway  
Design  
Division

