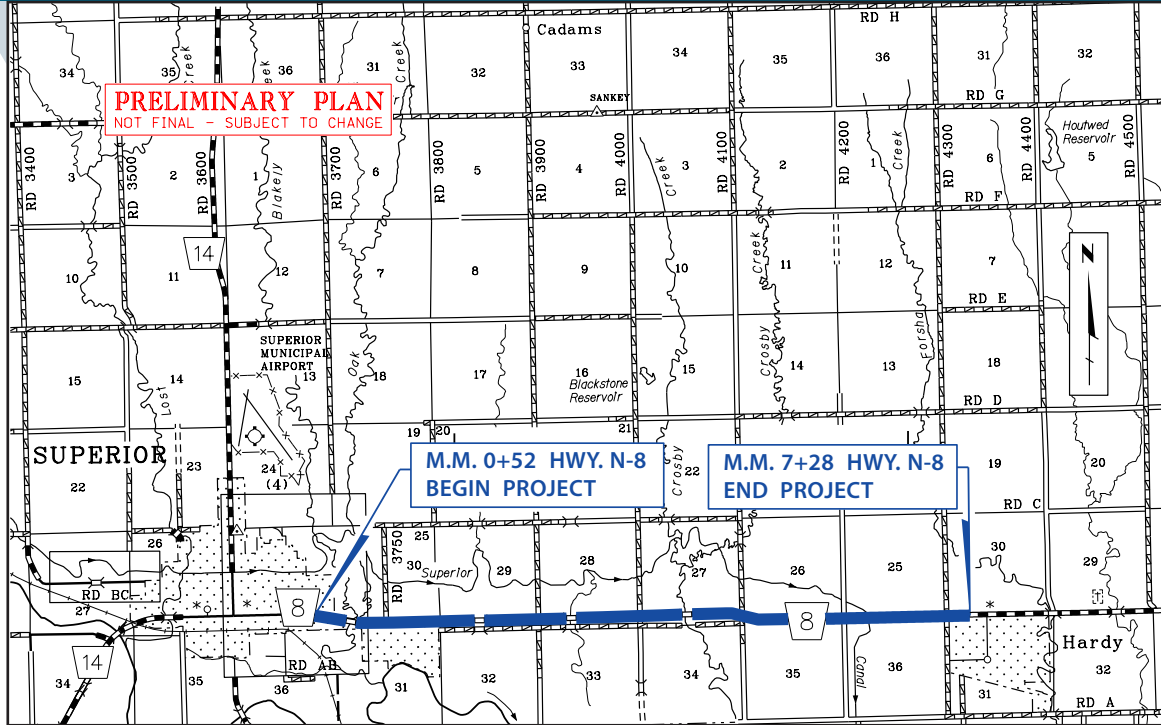


# Superior – Hardy



**Send comments or questions to:**

Sarah Soula, NDOT Public Involvement | [sarah.soula@nebraska.gov](mailto:sarah.soula@nebraska.gov) | 402-479-4871  
1500 Highway 2, PO Box 94759, Lincoln, NE 68509-4759

**For more information:**

Wes Wahlgren, NDOT District 4 Engineer | [wes.wahlgren@nebraska.gov](mailto:wes.wahlgren@nebraska.gov) | 308-385-6265  
211 N Tilden St, PO Box 1488, Grand Island, NE 68802-1488

[dot.nebraska.gov](http://dot.nebraska.gov)

