

NEBRASKA

Good Life. Great Journey.

DEPARTMENT OF TRANSPORTATION

District 4 Headquarters
211 North Tilden
PO Box 1488
Grand Island, NE 68802-1488
Phone (308) 385-6265 Fax (308) 385-6269
dot.nebraska.gov



Pete Ricketts, Governor

FOR IMMEDIATE RELEASE

Work Continues on US-281 in Grand Island with Northbound Lane Closures

September 28, 2017 (Grand Island, Neb.) — Weather permitting, concrete pavement replacement continues on US-281, with the northbound lanes closing October 2, according to the Nebraska Department of Transportation.

Paulsen Inc., will close the two northbound lanes on US-281 just south of Capital Ave. to the Burlington Northern Railroad Bridge. East and westbound traffic will be maintained through the Capital Ave. intersection until about October 11, then routed to State Street or 13th Street. Traffic will be maintained by message boards and detour signs.

During the work, northbound traffic on US-281 wanting to access N-2 & US-281 northbound will be detoured onto 13th St., east to Webb Rd., north to Capital Ave., east to Broadwell Ave., then north to the Hwy. 2 intersection & Old Hwy. 281. Southbound traffic on US-281 will stay in their lanes into Grand Island.

Eastbound N-2 traffic wanting to go northbound on US-281 will proceed to Broadwell Ave./N-2 intersection while the N- 2 ramps are being replaced with new concrete.

The Department of Transportation project manager is Bob Nordhues of Grand Island. Motorists are asked to drive safely near construction zones and to follow detour routes.

#NDOT#

Contact:

Bob Nordhues, (308) 385-6888 Ext. 104

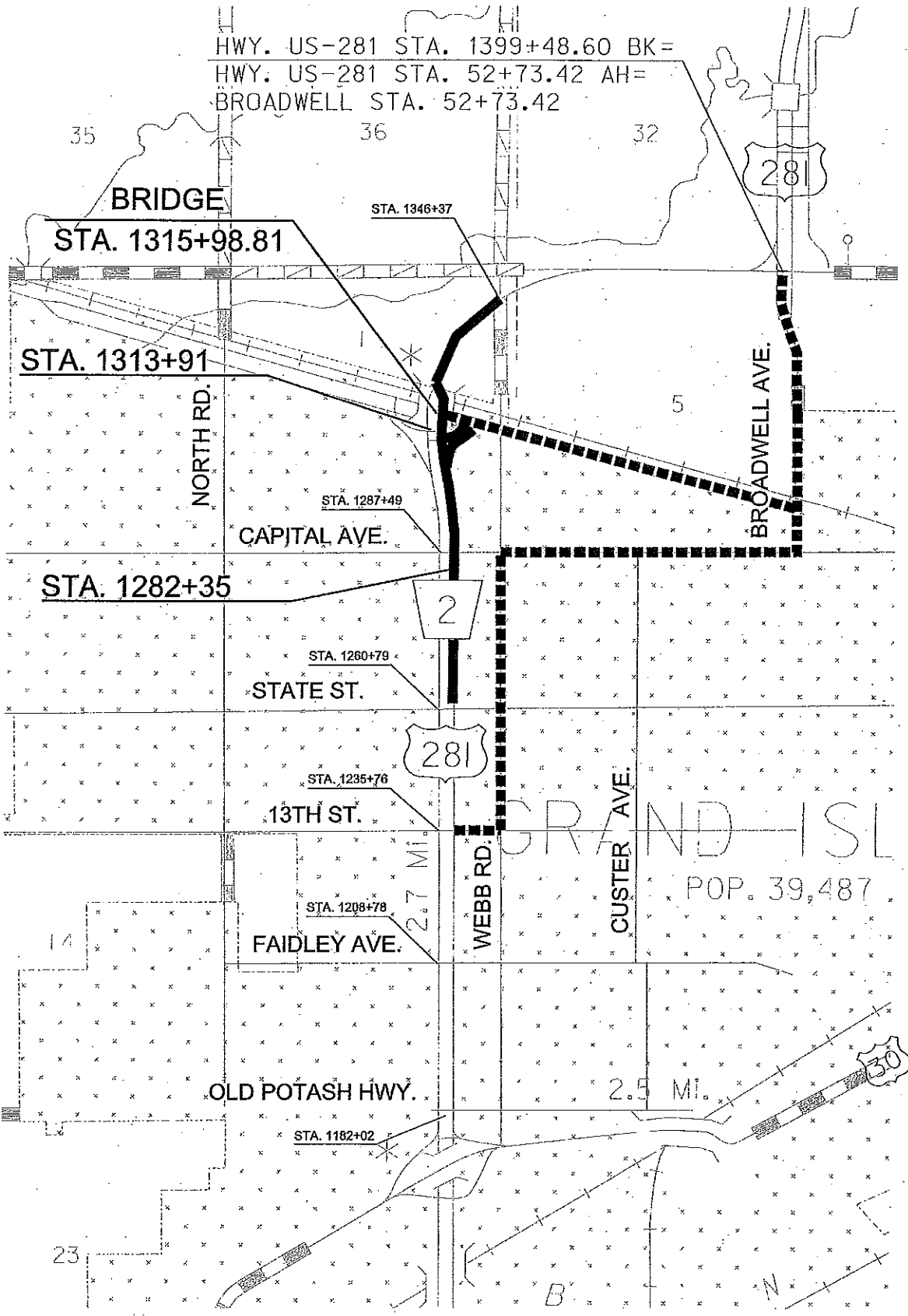
NR16-zh-42690

Attachment – Detour Map



PROJECT NO.	SHEET NO.
281-2(127)	2-P4
C.N. 42690	

HWY. US-281 STA. 1399+48.60 BK=
 HWY. US-281 STA. 52+73.42 AH=
 BROADWELL STA. 52+73.42



NOT TO SCALE

LEGEND
 ■■■■■ PROPOSED
 DETOUR ROUTE
 ——— NORTHBOUND
 US-281 CLOSURE



PHASING