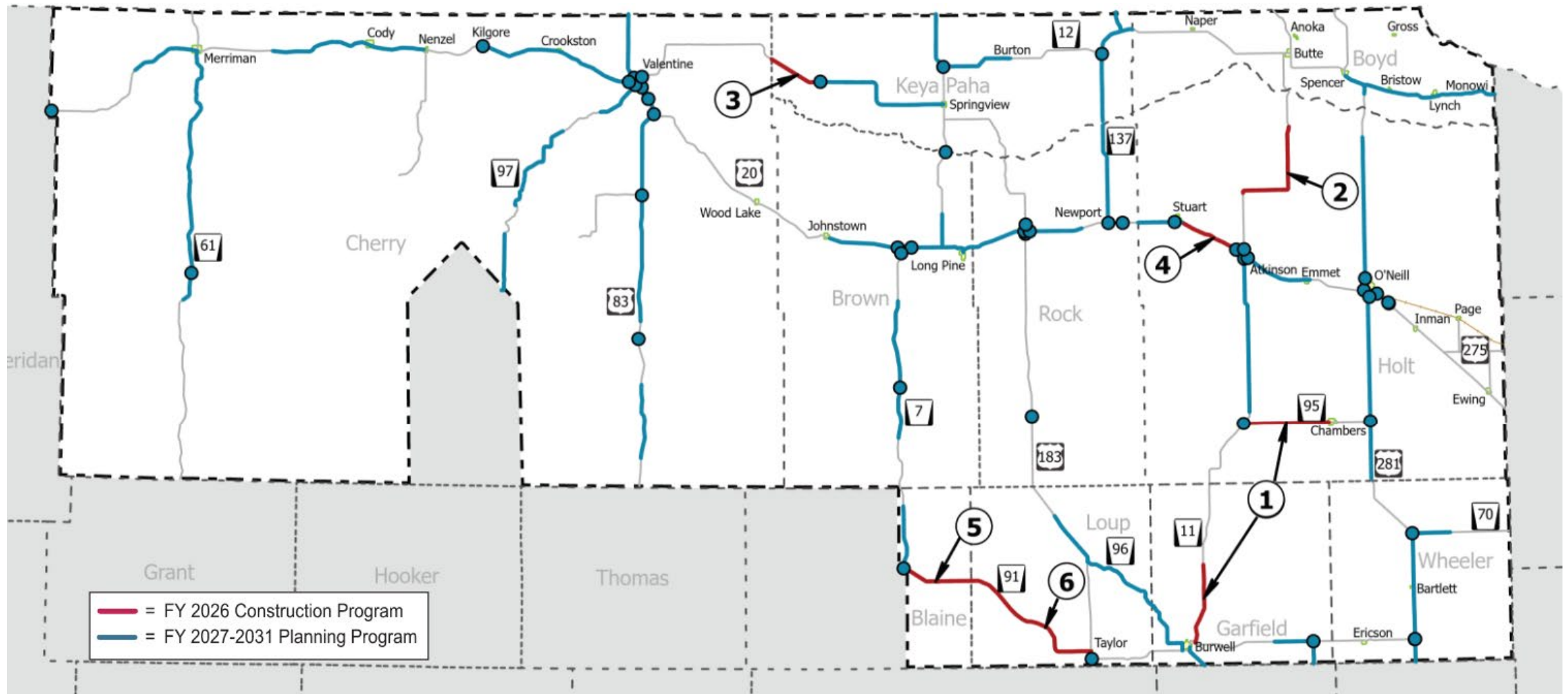


State Highway Commission Meeting NDOT District 8 Program Hearing

June 27, 2025
O'Neill Nebraska



Welcome to District 8



Before we get started...

In Remembrance...



Jerome Fagerland
Highway Commissioner 1999 - 2024

In Butte & North

Before



After



Topics This Morning

- The State of District 8
- Highway Improvement Projects
- Questions/Public Input.



The State of District 8

Our Pavement Conditions...

- Over 2,100 Lane Miles in D8.
- The Average NSI is **83** (Goal is 84.7)
- Percent of lane miles in good condition (NSI>70) is **99%**
- The 3-year average cost per lane mile is **\$18,707**.



So, what is the NSI and what does it mean?

It's a calculated pavement index based on various pavement distresses

- Joint Repair
- Panel Repair
- Rutting
- Cracking
- Patching
- Faulting
- Potholes
- Raveling
- Weathering
- Bleeding

It's not directly related to smoothness or ride quality.

Some underlying distresses can be masked by surface treatments, so knowing the pavement history is important.



So, what is the NSI and what does it mean?

- Good indicator of pavement **condition & remaining service life**.
- A high NSI indicates that the roadway material is in good shape with lots of service life.
- Applies to both **asphalt** and **concrete** pavements.
- Roads with an NSI near 100, have a 15 – 35-year service life.
- Roads with an NSI of 70, are at the end of their optimum service life.



NSI Example

NSI of 70



NSI of 99.6




The Myth

With Good Roads, and Low Traffic Volume, You Don't Need as Much Funding...

- Nothing could be further from the truth.
- Roadway conditions deteriorate faster, and repairs become more expensive, if work is not performed at the right time.
- Preserving the existing State Highway System is NDOT's Primary Priority.



NDOT's NSI Goal is 84.7

- Recommended by NDOT's System Preservation & Optimization Team (SPOT) in 2007.
 - Endorsed by the Highway Commission in March of 2007.
 - To achieve this goal, District 8 needs \$271 Million between 2026 – 2031.
 - Currently funded at \$211 Million.
 - NSI will drop to 81.8 by 2031.
- 

Funding Distribution

- Our current system was developed by NDOT's Funding Distribution Team (FDT) in 2008.
- This system has served us quite well over the years.
 - Statewide, in 2008, only 78% of lane miles were in good condition
 - Now 92% are in good condition.
- Endorsed by the Highway Commission in December of 2008.
- It's a flexible system that adapts to changes in overall funding and distributes system preservation funding based on the highway needs in each District, not population, traffic volume or fuel purchased.
- A 10-year horizon is used to calculate each District's needs based on the entire needs of the State.



Funding Distribution

- To redistribute funding based on population, or the location fuel is purchased, would devastate rural Nebraska roads.
- Urban Districts have almost \$2 Billion worth of projects programmed from 2026 - 2031.
- Be cognizant of how funding changes effect all Districts.



District 8 Highway Program

- Jason Lehn, P.E. District 8 Construction Engineer



Fiscal Year 2025 Construction Program

District Eight

July 1, 2024 - June 30, 2025

HWY. NO.	BEGIN REF. POST	COUNTY	CONTROL NO.	PROJECT NO.	LOCATION	LENGTH (MI.)	TYPE OF IMPROVEMENT	EST. COST (\$1,000)
		Rock	81142	MISC-STWD(1110)	Bassett Northeast ABB Mitigation Site		Mitigation Site	\$ 500
① S-16B	0.00	Cherry	81143	DPS-S16B(107)	Hackberry Lake Road & Nenzel South	20.9	Resurf.	3,687
② N-11	171.31	Holt	80952	STP-11-4(116)	Brush Creek - Niobrara River	4.6	Mill, Resurf., Br.	3,617
③ N-11	175.90	Boyd	81006	STP-11-4(119)	Niobrara River - Butte	5.7	Mill, Resurf., Br.	5,923
④ N-12	0.00	Cherry	81031	STP-12-2(108)	Valentine East	13.0	Microsurfacing	988
⑤ N-12	3.98	Cherry	80944	STP-12-2(106)	Minnechaduza Creek Bridge	0.0	Br.	3,776
⑥ N-12	113.92	Boyd	81095	STP-HSIP-12-4(114)	Butte - Spencer	9.1	Mill, Resurf.	8,261
⑦ US-20	210.57	Cherry	81033	NH-STP-20-2(147)	Wood Lake & Bassett Area	25.4	Microsurfacing	3,009
⑧ N-61	190.71	Cherry	81144	DPS-61-4(121)	District 8 Microsurface	74.0	Resurf.	4,348
⑨ N-70	171.91	Wheeler	81029	STP-70-4(112)	Wheeler/Antelope County Line West	8.0	Microsurfacing	1,129
⑩ US-83	187.92	Cherry	81078	NH-83-4(123)	Marsh Lake - Ballards Marsh	1.0	Culv.	1,056
⑪ N-97	128.96	Cherry	81053	STP-97-4(113)	Niobrara River North & South	6.3	Mill, Resurf., Br.	4,750
⑫ US-183	211.51	Keya Paha	81105	STP-183-4(121)	Springview North & South	7.3	Mill, Resurf., Br.	4,700
District Total								\$ 45,744



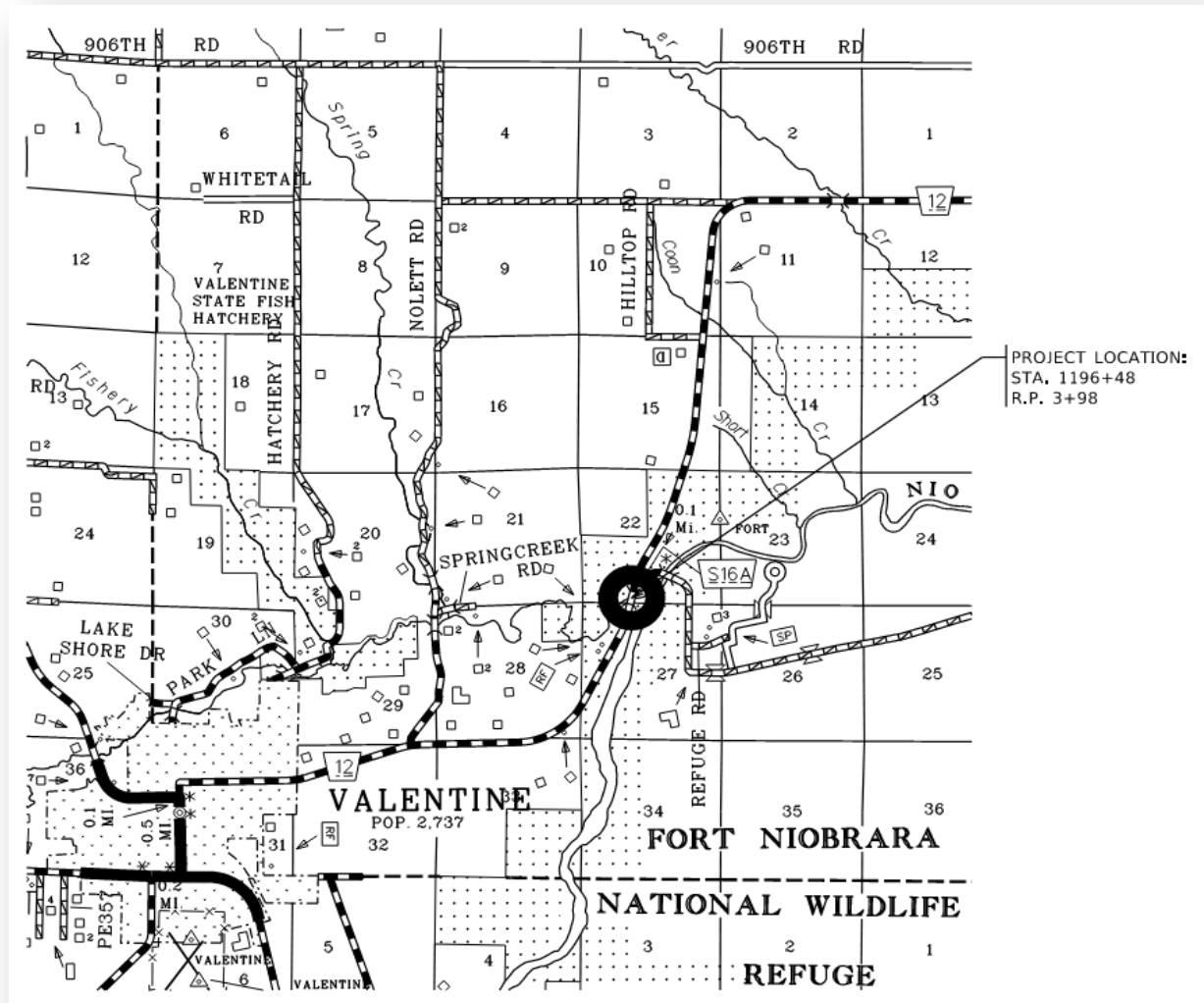
District 8

2025 Roadwork

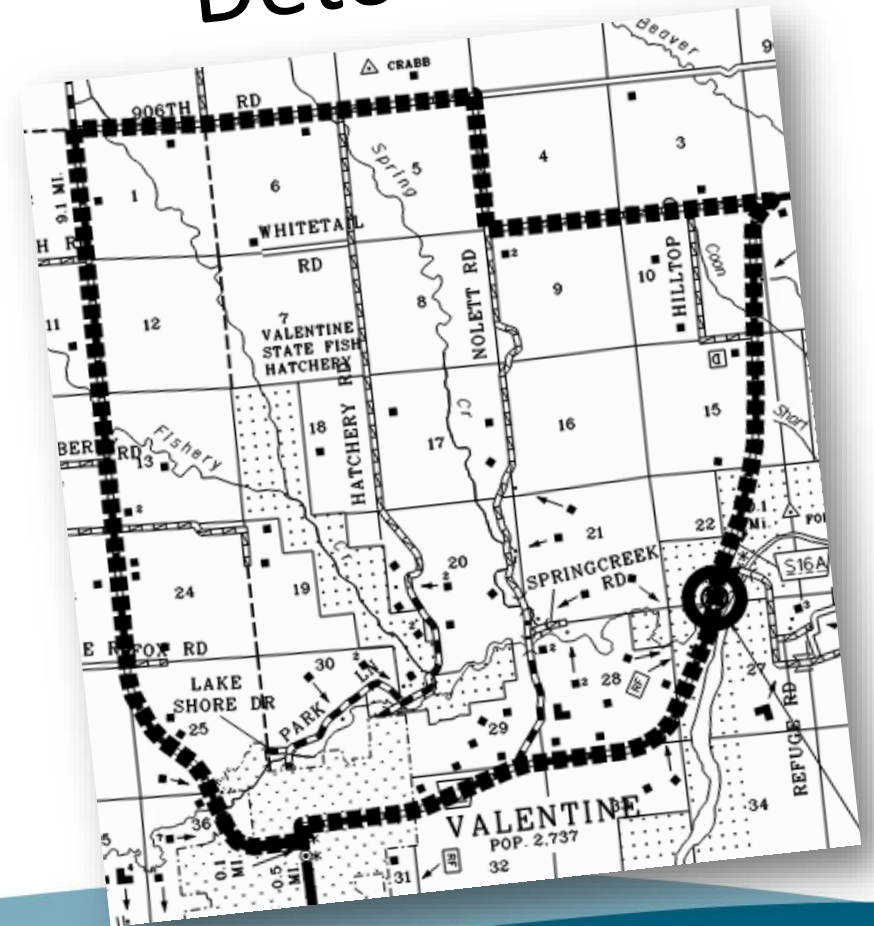
- Construction Projects
- Planned Maintenance Work

District 8 Districtwide Striping
AFE - H050
CN 81160
PM Carl Hart
Six Lines-A-Lot

Minnechaduzza Creek Bridge



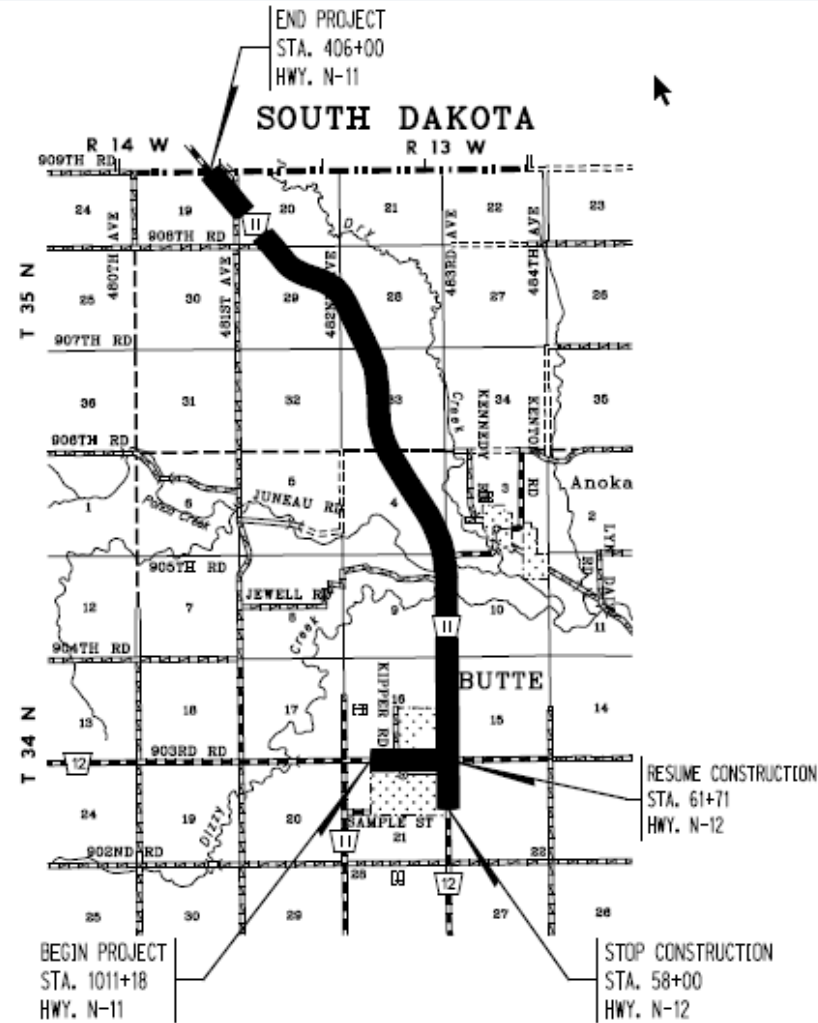
Detour



Minnechaduza Creek Bridge



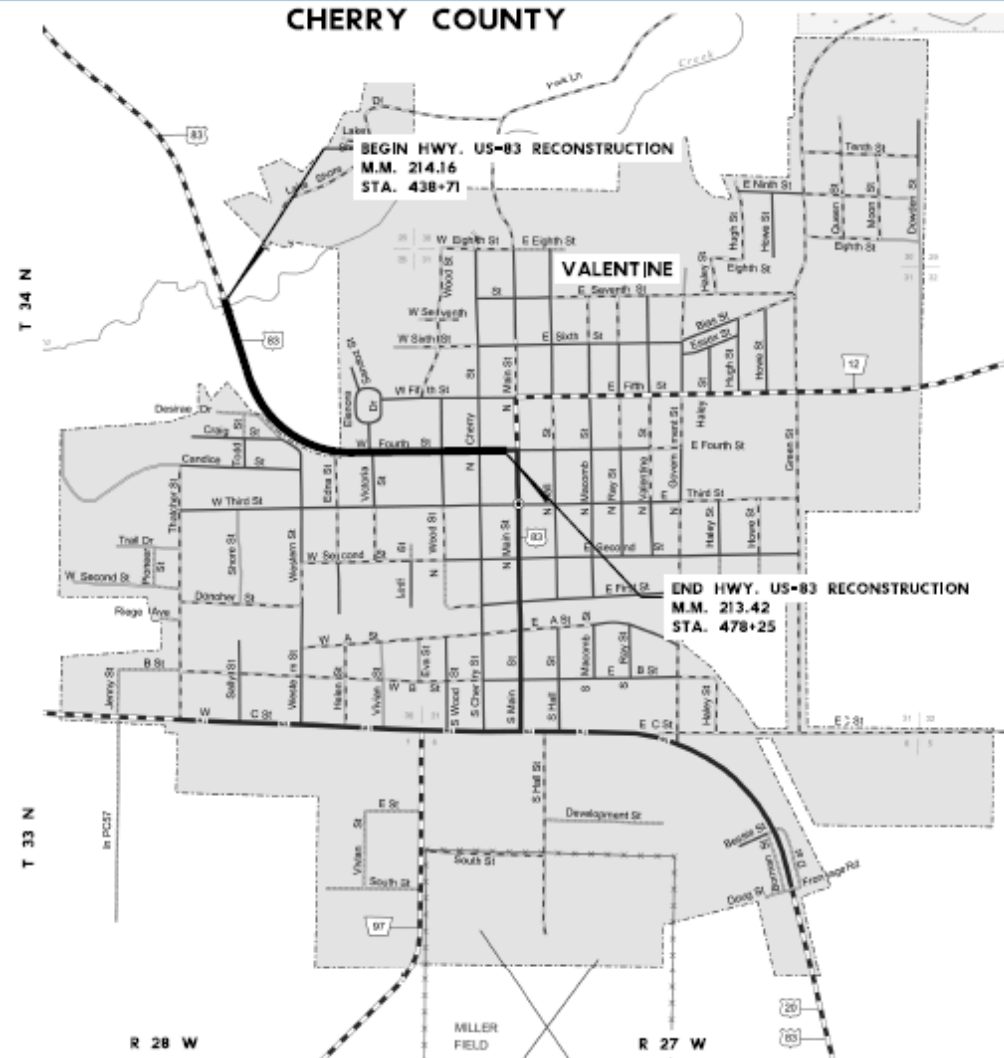
In Butte & North



In Butte & North



West 4th Street in Valentine



West 4th Street in Valentine





West 4th Street in Valentine



Districtwide Paint Striping

Cured In Place Culvert Liner



Butte - Spencer

Cured In Place Culvert Liner

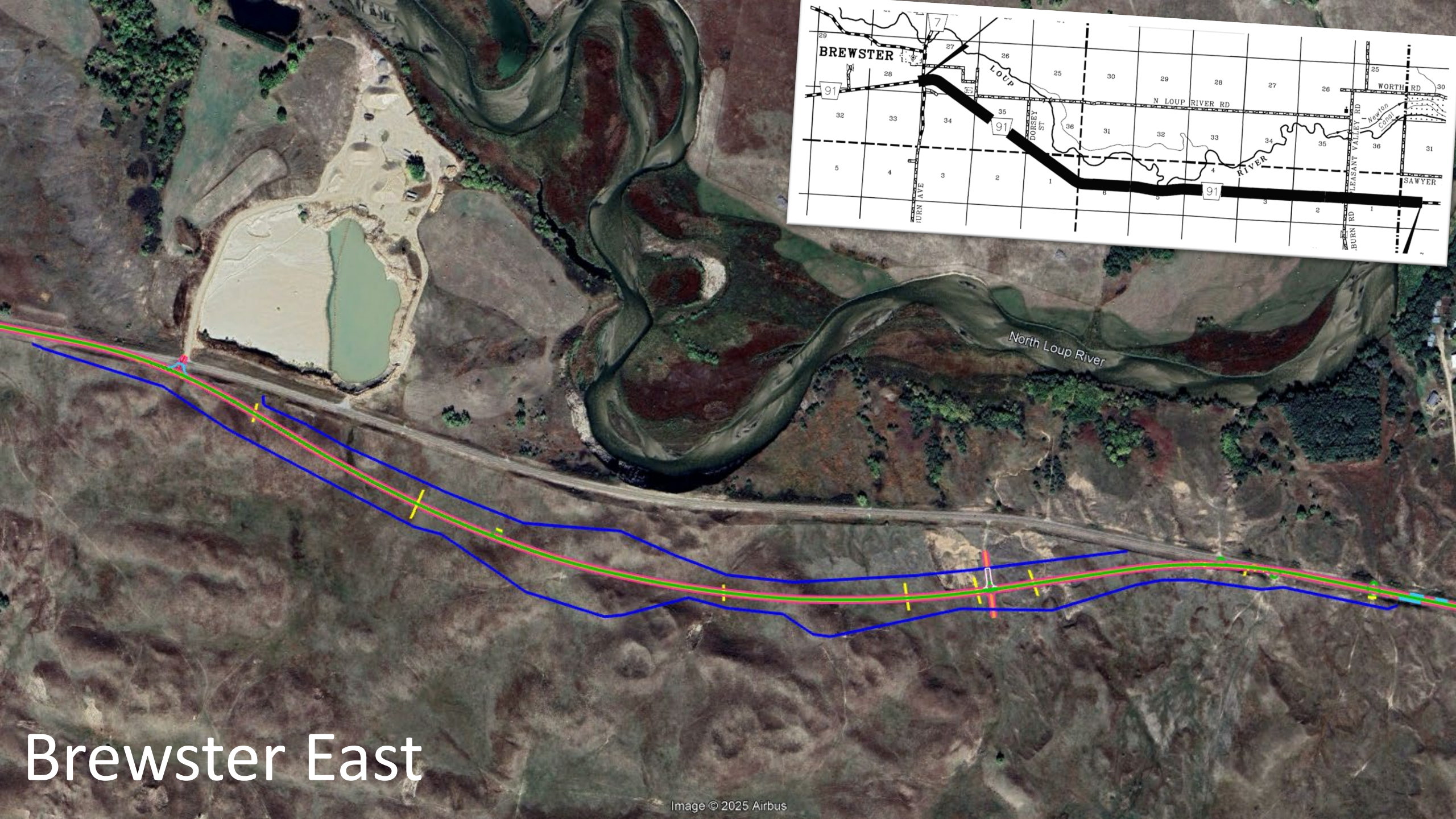


Niobrara River – Butte

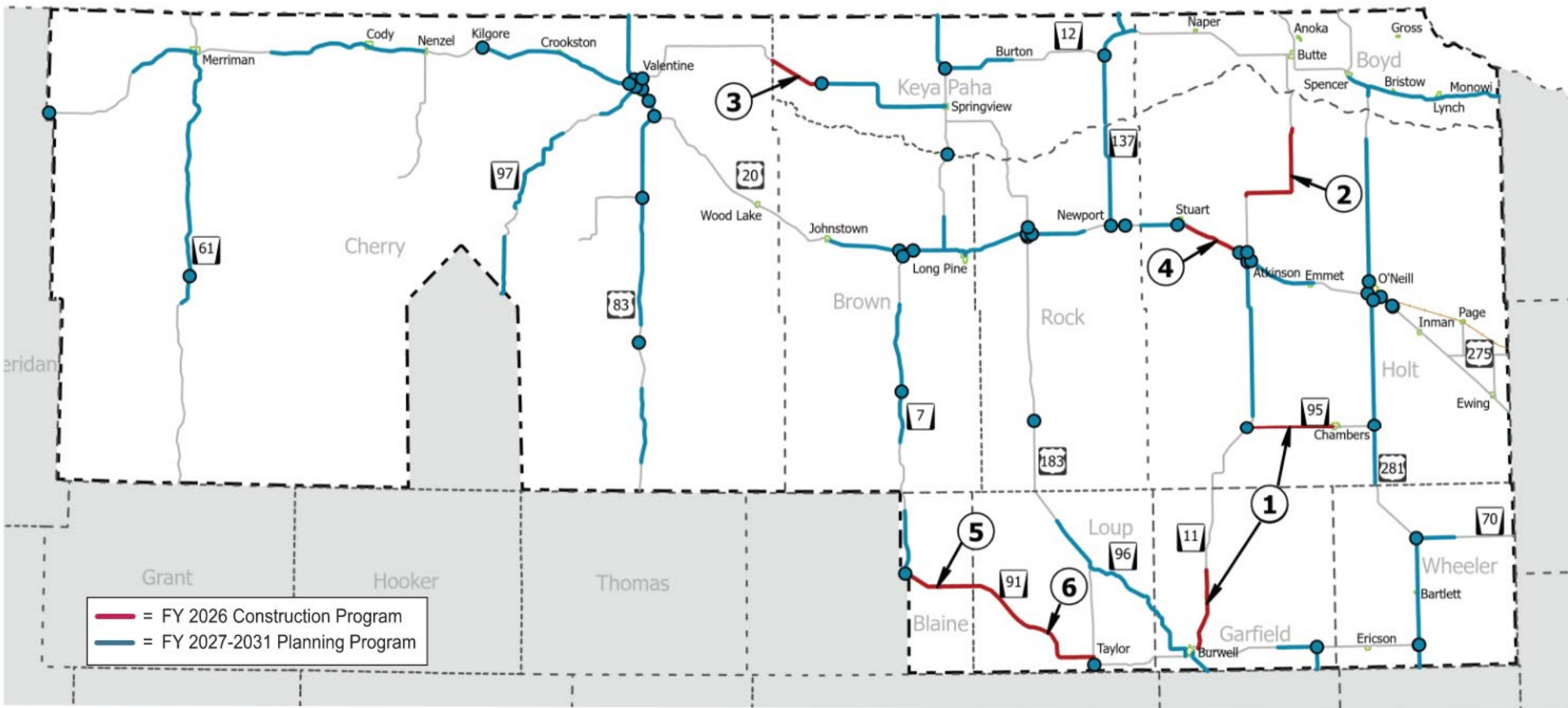
District Eight

July 1, 2025 - June 30, 2026

HWY. NO.	BEGIN REF. POST	COUNTY	CONTROL NO.	PROJECT NO.	LOCATION	LENGTH (MI.)	TYPE OF IMPROVEMENT	EST. COST (\$1,000)
① N-11	93.70	Holt	81059	STP-11-3(124)	Burwell North & Chambers West	21.9	Microsurfacing	\$ 2,178
② N-11	156.69	Holt	81058	STP-11-4(122)	Atkinson - Brush Creek	14.5	Microsurfacing	1,437
③ N-12	22.16	Keya Paha	80870	STP-12-3(108)	Norden West	7.0	Mill, Resurf.	4,116
④ US-20	280.55	Holt	81112	NH-20-4(132)	Stuart - Atkinson	7.8	Mill, Resurf., S.Shlds.	4,086
⑤ N-91	15.07	Blaine	80873	STP-91-3(108)	Brewster East	9.5	Mill, Resurf., Surf.	12,203
⑥ N-91	24.55	Loup	81057	STP-91-3(114)	Almeria East & West	20.4	Microsurfacing	2,035
District Total								\$ 26,055



Brewster East



Five-Year Planning Program

District Eight

Fiscal Years 2027 thru 2031

HWY. NO.	BEGIN REF. POST	COUNTY	CONTROL NO.	PROJECT NO.	LOCATION	LENGTH (MI.)	TYPE OF IMPROVEMENT	EST. COST (\$1,000)
Asset Preservation Projects								
N-7	0.00	Blaine	81072	STP-7-3(104)	Brewster North	8.4	Microsurfacing	\$ 930
N-7	17.72	Brown	81060	STP-7-4(123)	Calamus River - Ainsworth	18.6	Microsurfacing	1,770
N-11	127.42	Holt	81067	STP-11-4(123)	Amelia - Atkinson	21.0	Microsurfacing	3,109
N-12	29.13	Keya Paha	80854	STP-12-3(110)	Norden East	11.2	Mill, Resurf.	10,159
N-12	40.37	Keya Paha	81061	STP-12-4(113)	Springview Area	17.3	Microsurfacing	1,805
N-12	126.63	Boyd	81065	STP-NH-12-4(112)	Spencer Area	21.9	Microsurfacing	2,041
US-20	126.64	Cherry	81124	NH-20-2(151)	Merriman West	9.2	Mill, Resurf.	5,805
US-20	146.00	Cherry	81131	NH-20-2(153)	Eli Road East	9.1	Resurf	5,823
US-20	155.11	Cherry	81130	NH-20-2(152)	Cody East & West	11.7	Mill, Resurf.	7,446
US-20	174.49	Cherry	81158	NH-20-2(157)	Kilgore - Crookston	11.0	Resurf.	5,561
US-20	185.50	Cherry	81156	NH-20-2(156)	Crookston - Valentine	10.6	Resurf.	7,926
US-20	195.75	Cherry	81150	ITS-NH-STP-D8(104)	District 8 Road Closure Signs	0.0	Closure Signs	908
US-20	199.81	Cherry	81089	STP-20-2(150)	Bryan Bridge	0.0	Br.	1,971
US-20	232.59	Brown	81117	NH-20-3(119)	Johnstown - Ainsworth	9.3	Mill, Resurf., S.Shlds.	5,916
US-20	243.38	Brown	81118	NH-20-3(120)	Ainsworth East	5.8	Mill, Resurf., S.Shlds.	3,150
US-20	249.19	Brown	81157	NH-STP-20-3(123)	Long Pine East & West	4.2	Mill, Resurf., Br.	3,079
US-20	252.87	Rock	81127	NH-20-3(121)	Bassett West	6.3	Mill, Resurf.	3,772
US-20	259.75	Rock	81092	NH-20-3(116)	Bassett East	7.0	Mill, Resurf., S.Shlds.	4,377
US-20	274.36	Holt	81094	NH-20-3(118)	Stuart West	6.2	Mill, Resurf., S.Shlds., Br.	5,223
US-20	288.35	Holt	81109	NH-20-4(130)	Atkinson - Emmet	10.8	Mill, Resurf., S.Shlds.	5,335
US-20	310.87	Holt	80956	NH-20-4(126)	O'Neill Southeast Bridges	0.0	Br.	6,667
N-61	190.71	Cherry	81071	STP-61-4(117)	Fawn Lake Road - Niobrara River	25.4	Microsurfacing	2,820
N-61	216.09	Cherry	81125	STP-61-4(120)	Niobrara River North & South	3.5	Resurf., Br	1,968



Five-Year Planning Program *(continued)*

District Eight

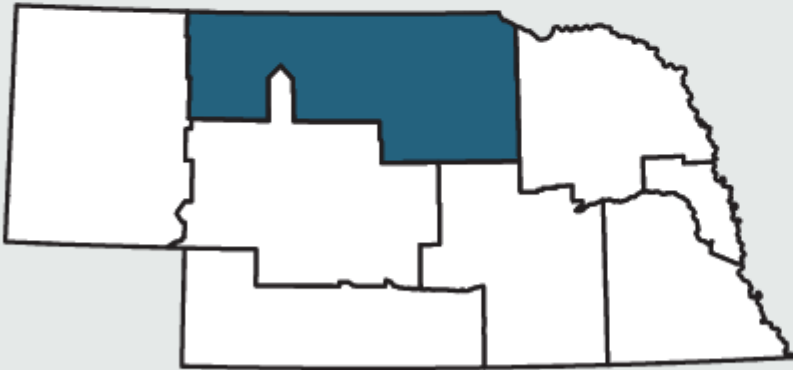
HWY. NO.	BEGIN REF. POST	COUNTY	CONTROL NO.	PROJECT NO.	LOCATION	LENGTH (MI.)	TYPE OF IMPROVEMENT	EST. COST (\$1,000)
N-61	219.63	Cherry	80662	STP-61-4(110)	Merriman South	6.1	Mill, Resurf., Br.	5,460
US-83	160.48	Cherry	81129	NH-83-4(126)	Brownlee Rd. South	10.1	Mill, Resurf.	6,261
US-83	179.16	Cherry	81062	NH-83-4(122)	Valentine South	12.2	Microsurfacing	1,929
US-83	186.93	Cherry	81138	NH-83-4(127)	Hackberry Lake Spur North & South	10.2	Mill, Resurf.	6,560
US-83	197.13	Cherry	81114	NH-83-4(124)	S-16B - US-20	10.3	Mill, Resurf., S.Shlds., Br.	6,893
US-83	214.16	Cherry	81159	NH-83-4(128)	Valentine North	8.3	Resurf.	5,841
N-91	72.23	Garfield	81064	STP-91-4(112)	Burwell - Ericson & Calamus Northwest	15.5	Microsurfacing	1,639
N-96	0.00	Loup	81069	STP-96-3(102)	Burwell Northwest	20.0	Microsurfacing	2,103
N-97	102.65	Cherry	80617	STP-97-4(109)	Merritt Reservoir South	7.7	Resurf., Gr., Surf.	12,035
N-97	115.40	Cherry	81074	STP-97-4(114)	Merritt Dam North	13.6	Mill, Resurf., Br.	10,823
N-97	135.06	Cherry	81075	STP-97-4(115)	Valentine Southwest	6.5	Mill, Resurf.	3,812
N-137	0.00	Rock	81070	STP-137-4(111)	Newport North	13.3	Microsurfacing	1,398
N-137	13.83	Keya Paha	81066	STP-137-4(110)	Niobrara River - NE/SD Line	17.6	Microsurfacing	2,383
US-183	122.89	Loup	81151	ITS-NH-STP-D8(105)	District 8 Cameras & RWIS Replacement	0.0	Cameras & RWIS Replacement	1,498
US-183	193.94	Brown	81116	STP-183-4(122)	West Jct. US-20 North	4.4	Mill, Resurf.	3,071
US-183	207.00	Brown	81079	STP-183-4(120)	Springview South	0.2	Gr.	681
US-183	218.72	Keya Paha	81068	STP-183-4(119)	NE/SD Line South	7.1	Microsurfacing	1,076
US-281	131.49	Wheeler	81145	NH-STP-281-3(116)	Bartlett South	9.0	Mill, Resurf.	4,144
US-281	140.48	Wheeler	81146	NH-281-3(117)	Bartlett North & South	7.7	Mill, Resurf.	4,550
US-281	158.09	Holt	81063	NH-STP-281-4(131)	Chambers Jct. South & Cummingsville East	12.5	Microsurfacing	1,218
US-281	165.56	Holt	81128	NH-281-4(135)	Chambers Jct. North	9.9	Mill, Resurf.	5,958
US-281	175.46	Holt	81123	NH-281-4(134)	O'Neill South	7.3	Mill, Resurf.	5,089
US-281	183.82	Holt	81113	NH-281-4(133)	O'Neill North	13.1	Mill, Resurf., S.Shlds.	6,572
US-281	196.88	Holt	80990	NH-281-4(127)	O'Neill - Spencer	7.2	Microsurfacing	674
District Total								\$ 199,229



Questions/Public Input

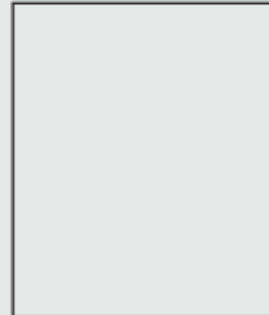
District Eight

Six-Year Highway Program



District Engineer
Mark A. Kovar

736 East 4th St.
Ainsworth, NE 69210-1215
402-387-2471



Highway Commissioner
Vacant