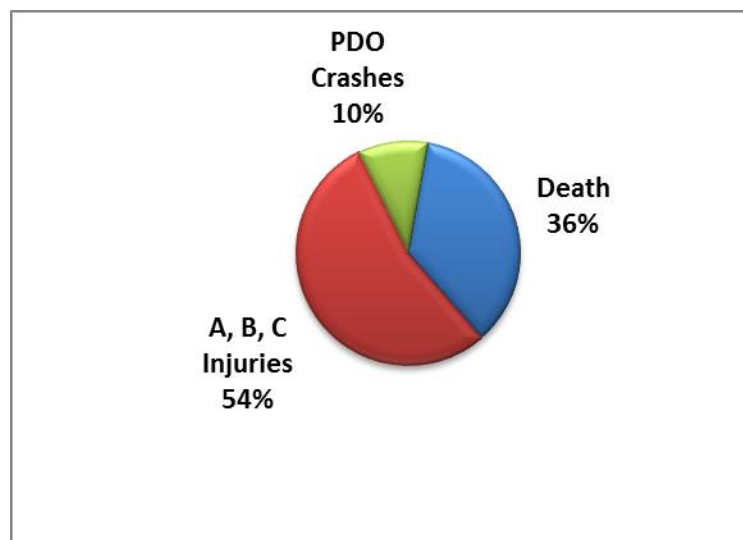


# NEBRASKA ECONOMIC COST ESTIMATE FOR MOTOR-VEHICLE CRASHES IN 2016

The cost of each type of motor-vehicle crash includes wage and productivity losses, medical expenses, administrative expenses, motor vehicle damage, and uninsured employer costs for crashes involving workers. The information below indicates the average economic costs in 2015 per death (not each fatal crash), per nonfatal disabling injury (A) (not each injury crash), visible, but not disabling injury (B), visible, but not disabling injury (C), and per property damage crash.

Type of Injury/Crash	Number of each type of Injury/Crash	Cost Per each type of Injury/Crash	Total Cost of all types of Injury/Crash
Death	218	\$1,550,000	\$337,900,000
Disabling Injury	1,588	\$90,000	\$142,920,000
Visible, but not Disabling Injury	4,863	\$26,000	\$126,438,000
Possible Injury	11,511	\$21,000	\$241,731,000
Property-damage crashes	22,434	\$4,200	\$94,222,800

<b>Total Projected Costs for 2016</b>	<b>\$943,211,800</b>
---------------------------------------	----------------------



PDO – Property Damage Only Crash

Source: National Safety Council, Injury Facts 2015 Edition

Provided by: NDOT-Highway Safety Office, PO Box 94612, Lincoln, NE 68509

Revised 10/16/17