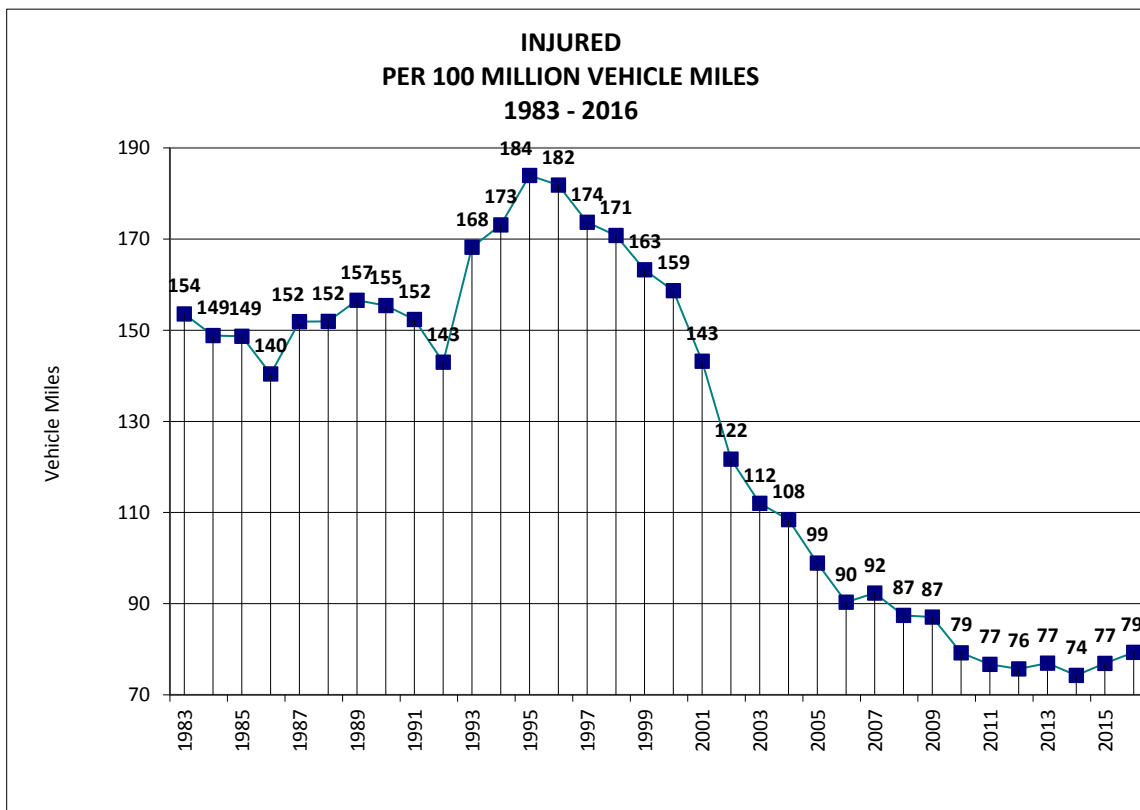
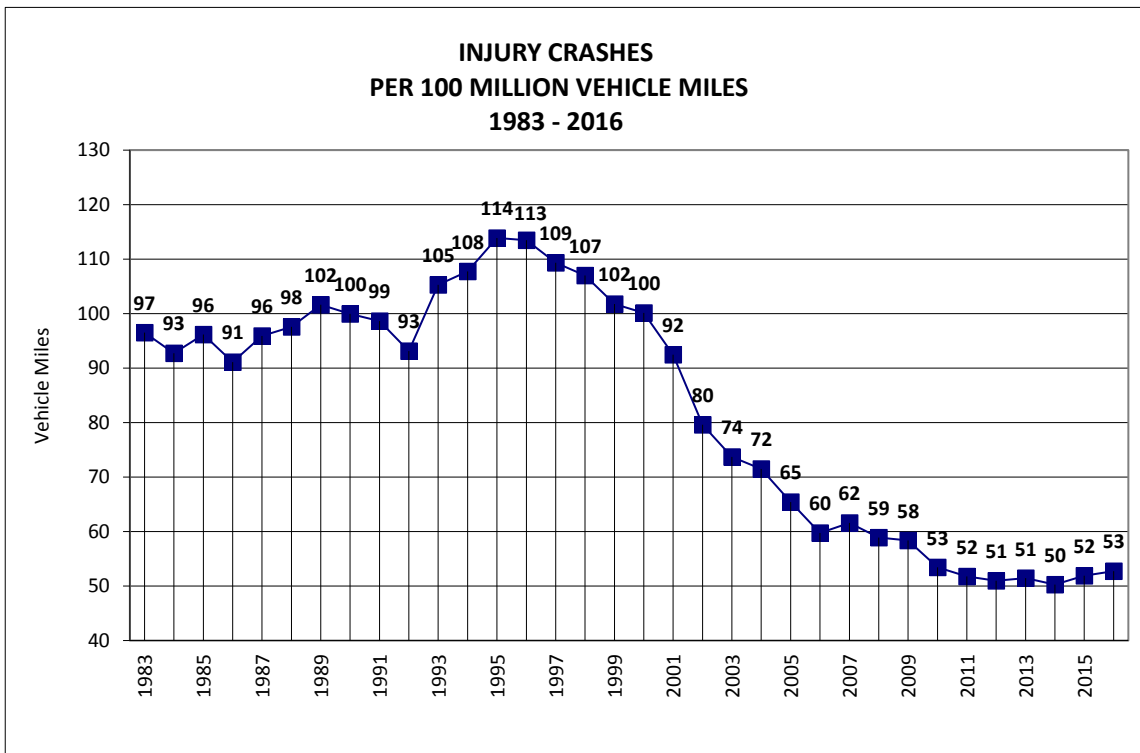


**NEBRASKA**  
**ANNUAL PASSENGER VEHICLE INJURY CRASHES AND INJURY RATES**  
 Excludes motorcycle, pedestrian and pedalcyclist crashes

<b>YEAR</b>	<b>TOTAL PASSENGER VEHICLE CRASHES</b>	<b>TOTAL INJURY CRASHES</b>	<b>INJURY CRASHES PER 100 MILLION VEHICLE MILES</b>	<b>TOTAL INJURED</b>	<b>TOTAL VEHICLE MILES DRIVEN</b>	<b>INJURED PER 100 MILLION VEHICLE MILES</b>	<b>OBSERVED SAFETY BELT USAGE RATES</b>
1983	46,107*	11,133	97	17,715	11,534	154	11%
1984	44,407*	11,066	93	17,759	11,934	149	12%
1985	45,648*	11,589	96	17,923	12,054	149	23%
1986	34,783	11,505	91	17,733	12,630	140	45%
1987	36,093	12,554	96	19,880	13,091	152	28%
1988	37,540	13,044	98	20,317	13,371	152	31%
1989	40,464	14,004	102	21,579	13,781	157	32%
1990	39,724	13,952	100	21,689	13,957	155	33%
1991	40,366	13,904	99	21,472	14,095	152	32%
1992	38,827	13,580	93	20,849	14,581	143	33%
1993	42,536	15,558	105	24,854	14,777	168	54%
1994	42,848	16,662	108	26,767	15,464	173	63%
1995	45,215	18,003	114	29,081	15,809	184	64%
1996	46,183	18,374	113	29,445	16,194	182	65%
1997	46,957	18,358	109	29,165	16,791	174	63%
1998	47,073	18,422	107	29,404	17,219	171	65%
1999	47,086	17,881	102	28,680	17,570	163	68%
2000	46,891	17,745	100	28,124	17,723	159	71%
2001	46,825	16,591	92	25,694	17,940	143	70%
2002	45,061	14,552	80	22,255	18,281	122	70%
2003	45,446	13,699	74	20,827	18,592	112	76%
2004	36,112	13,322	72	20,205	18,630	108	79%
2005	34,659	12,390	65	18,732	18,938	99	79%
2006	31,714	11,481	60	17,364	19,223	90	76%
2007	34,751	11,892	62	17,822	19,304	92	79%
2008	33,301	11,108	59	16,496	18,864	87	83%
2009	33,541	11,179	58	16,668	19,147	87	85%
2010	32,095	10,524	53	15,607	19,698	79	84%
2011	31,098	10,084	52	14,936	19,478	77	84%
2012	29,165	9,847	51	14,615	19,315	76	79%
2013	30,171	9,960	51	14,900	19,363	77	79%
2014	31,154	9,951	50	14,705	19,795	74	79%
2015	32,818	10,497	52	15,560	20,230	77	79%
2016	33,718	11,172	53	16,794	21,177	79	83%

\*Includes reportable property damage crashes between \$250 and \$500.

## NEBRASKA ANNUAL PASSENGER VEHICLE INJURY CRASH AND INJURY RATES



Source: Standard Summary of Nebraska, Motor Vehicle Traffic Crashes  
 Provided by: NDOT - Highway Safety Office, PO Box 94612, Lincoln, NE 68509  
 Last Date Modified: August 31, 2017