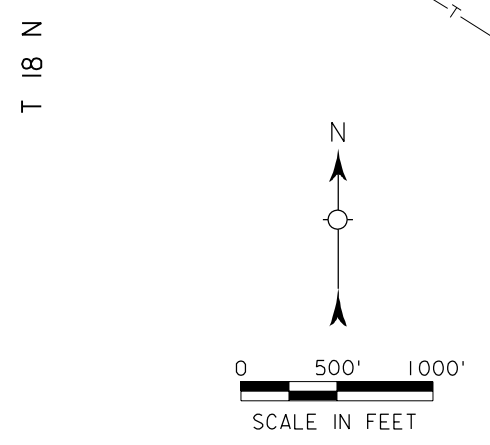
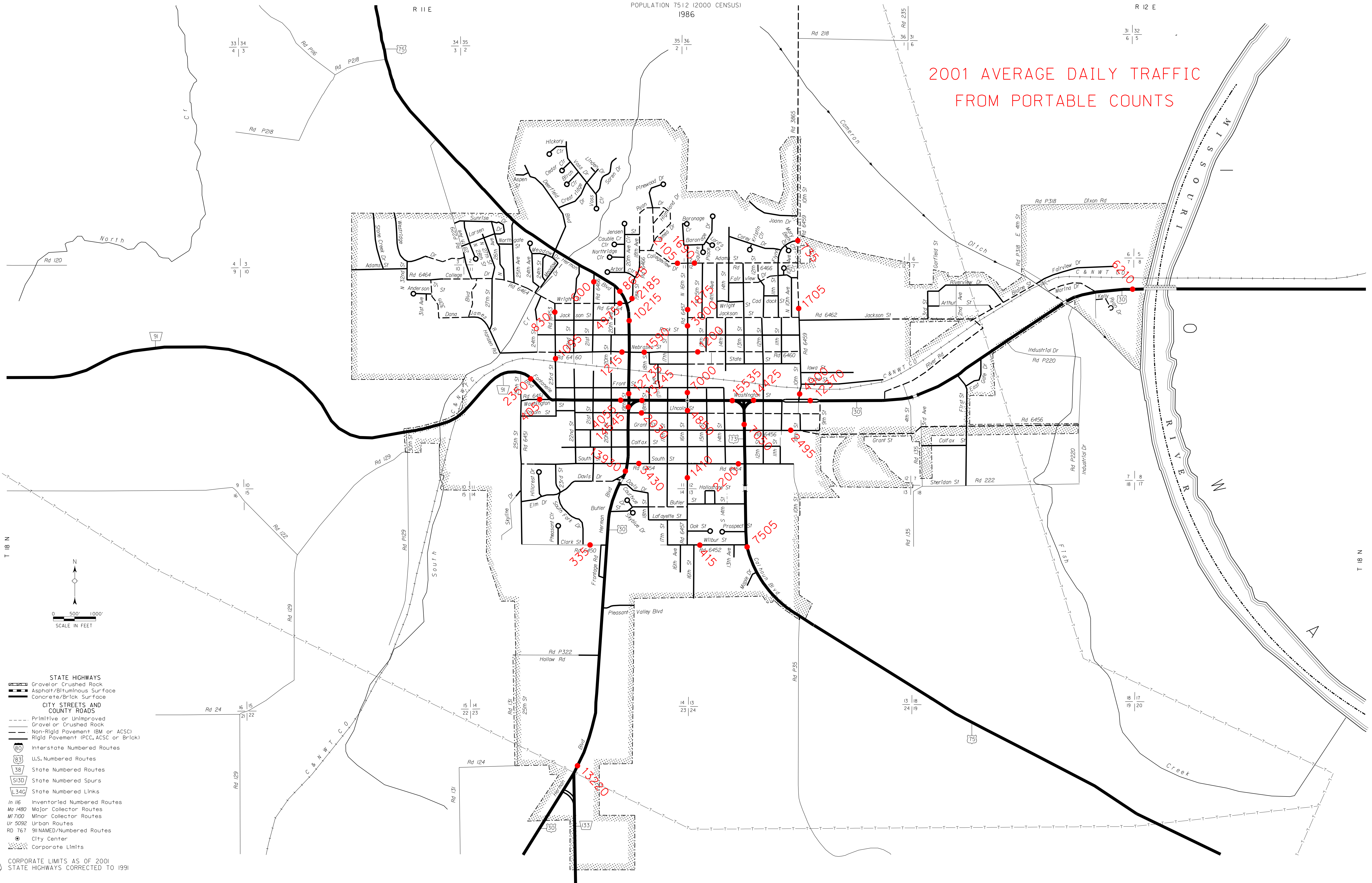


BLAIR

WASHINGTON COUNTY
NEBRASKA
POPULATION 7512 (2000 CENSUS)
1986

2001 AVERAGE DAILY TRAFFIC
FROM PORTABLE COUNTS



- STATE HIGHWAYS**
 - Gravel or Crushed Rock
 - Asphalt/Bituminous Surface
 - Concrete/Brick Surface
- CITY STREETS AND COUNTY ROADS**
 - Primitive or Unimproved Gravel or Crushed Rock
 - Non-Rigid Pavement (BM or ACSC)
 - Rigid Pavement (PCC, ACSC or Brick)
- Interstate Numbered Routes**
- U.S. Numbered Routes**
- State Numbered Routes**
- State Numbered Spurs**
- State Numbered Links**
- In 116** Inventoried Numbered Routes
- Ma 1480** Major Collector Routes
- Mi 7100** Minor Collector Routes
- Ur 5092** Urban Routes
- RD 767** 911NAMED/Numbered Routes
- City Center
- Corporate Limits

CORPORATE LIMITS AS OF 2001
STATE HIGHWAYS CORRECTED TO 1991